

## Main Features and Benefit

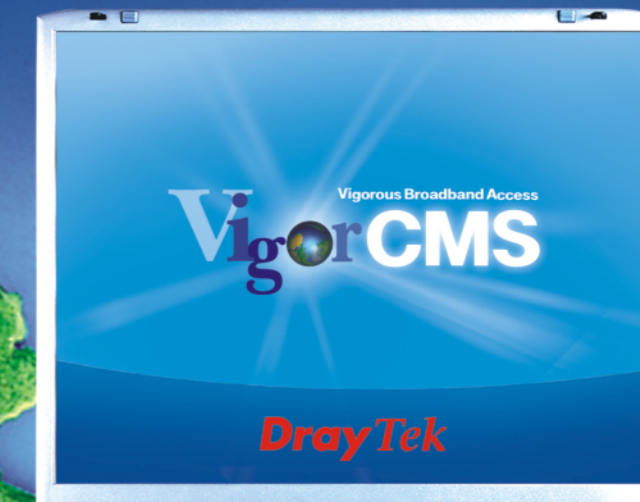
- Manage up to 5,000 SNMPv1, v2c agents for one server instance
- Support Standard MIB II, RFC1213, RFC2662, IEEE802.11 MIB, proprietary VoIP MIB, proprietary VPN MIB, proprietary ADSL MIB
- Manage the Vigor3300 or VigorAccess devices
- Invoke Web interface, telnet and ping functions for remote control
- Integrate VigorView management tool
- Support schedule software upgrade
- Support auto-discovery
- Support auto-provisioning
- Support alarm management
- Auto alerting by e-mail
- Topology management
- Support device polling
- Device panel view
- Role-based security management
- Online help and alarm trouble-shooting
- Trap handling capability (150 traps/sec)
- Performance measurement, including dynamic chart and report generation
- VigorCMS server can be in the Windows 2000, XP, NT, Linux and Sun Solaris
- GUI can be in the Windows 2000, XP and NT



Vigor Central Management System Server ( VigorCMS Server) is a multi-tier architecture, flexible and easy to use for system management. It can manage 1,000 to 5,000 Vigor devices, depends on the capacity of sever. A step-by-step configuration wizard makes users deploy large numbers of devices to customer sites easily. VigorCMS provides configuration management, topology management, security management, fault management and backup / restore management.

**DrayTek**

# VigorCMS



**DrayTek**

**DrayTek**

www.draytek.com E-mail:info@draytek.com Tel:+886 3 597 2727 Fax:+886 3 597 2121

991-000013-00

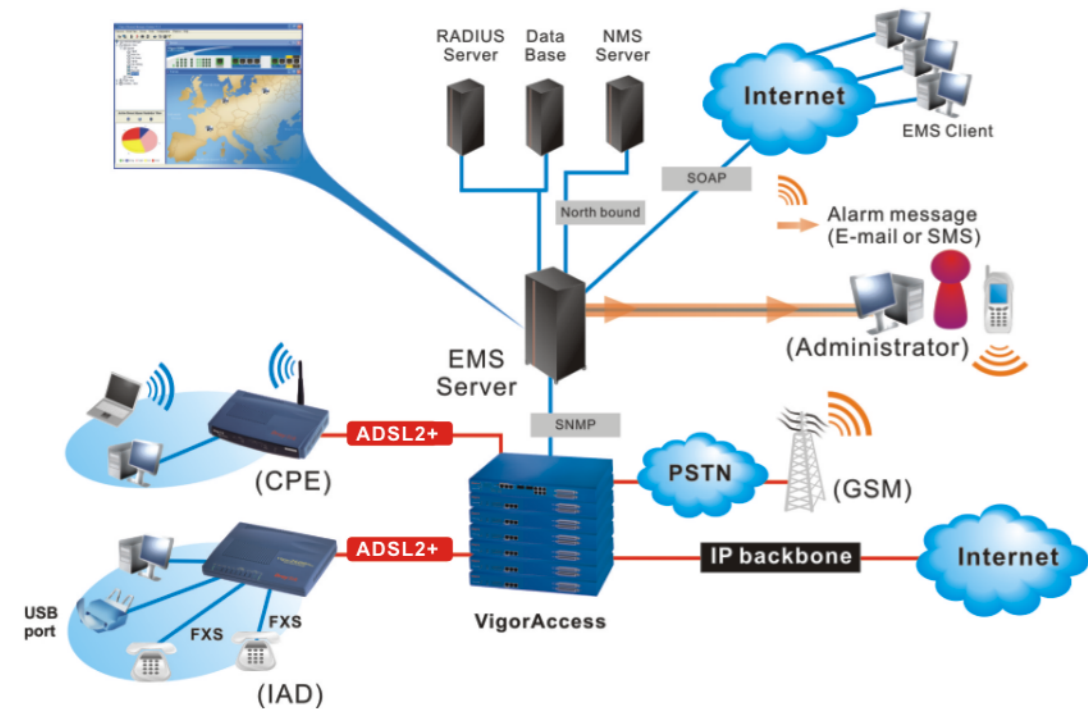
Trademarks and brand names are the properties of their respective owners. The scope of delivery and other details are subject to change without prior notice.



# VigorCMS

## System Architecture

The picture depicts the system overview between IP DSLAM devices and VigorCMS system. The VigorCMS server and IP DSLAM devices use SNMP protocol to communicate with each other.



## System Status

This Configuration function allows you to configure parameters about devices. When you click the icon of device in the device map in the left panel of VigorCMS main window, a device configuration window will be shown as the picture.

The device configuration window shows the following details for a device:

- Display Name:** 172.16.2.152-Master
- Device Type:** Master-Slave
- IP:** 172.16.2.152
- Sys Location:** urlocation
- Sys Up Time:** 1 day, 23:28:55.39
- SNMP Version:** V2
- Read Community:** public
- Write Community:** private
- SNMP Port:** 161

Buttons for Refresh, Update, and a Controller menu (DSL, PVC, Port, Bridge, ACL) are also visible.

## User Management

User management includes add, delete update and query users. When you click the main menu item Advance->System manager, you will see the function list under the tree folder in the left panel of the system manager window. Click the System->User under the tree will present a user list dialog box as the picture.

Name	Password	Email	Description	Stat
1 root	+GW1NiOxI007...	root@ems	System Admini...	active
2 admin	0DPIKuNlrVm...	admin@ems	Administrator	Active
3 operator	/pbdOXVqxBt0K...	operator@ems	Operator	Active

## Auto Discovery

When you want to know how many devices in the network or want to add them in the network. The auto discovery will let you see the list. The user may modify the default value of these values to add the selected devices to the network.

The dialog shows the following settings:

- IP Address:** 172.16.2.151
- Subnet Mask:** 255.255.255.240
- Community:** public

Buttons for Auto Discovery, Add, Cancel, and Close are present.

IP	Port	SNMP Read Community	SNMP Write Community	Display Name	SNMP Version	Device Type
1 172.16.2.151	161	public	private	172.16.2.151	V2	Master-Slave
2 172.16.2.152	161	public	private	172.16.2.152	V2	Master-Slave

## System Alarm

User can view alarms when you click the alarm panel in the bottom of the left panel or select the menu Event->Alarm View to see the traps received from devices. These alarms will be stored in the database for query. The picture shows an example as the Alarm and Trap Window.

Device Name	Device IP	Alarm Time	Device Type	Err
4 151	172.17.3.151	2006-02-13 15:22:46	Master-Slave	port-21
5 151	172.17.3.151	2006-02-13 15:22:46	Master-Slave	port-20
6 151	172.17.3.151	2006-02-13 15:22:46	Master-Slave	port-17
7 151	172.17.3.151	2006-02-13 15:22:46	Master-Slave	port-16
8 151	172.17.3.151	2006-02-13 15:22:46	Master-Slave	port-15
9 151	172.17.3.151	2006-02-13 15:22:46	Master-Slave	port-14
10 151	172.17.3.151	2006-02-13 15:22:46	Master-Slave	port-13
11 151	172.17.3.151	2006-02-13 15:22:46	Master-Slave	port-12
12 151	172.17.3.151	2006-02-13 15:22:46	Master-Slave	port-11
13 151	172.17.3.151	2006-02-13 15:22:46	Master-Slave	port-10
14 151	172.17.3.151	2006-02-13 15:22:46	Master-Slave	port-9,s
15 151	172.17.3.151	2006-02-13 15:22:46	Master-Slave	port-8,s
16 151	172.17.3.151	2006-02-13 15:22:46	Master-Slave	port-7,s
17 151	172.17.3.151	2006-02-13 15:22:46	Master-Slave	port-6,s
18 151	172.17.3.151	2006-02-13 15:22:46	Master-Slave	port-5,s
19 151	172.17.3.151	2006-02-13 15:22:46	Master-Slave	port-4,s
20 151	172.17.3.151	2006-02-13 15:22:46	Master-Slave	port-3,s
21 151	172.17.3.151	2006-02-13 15:22:46	Master-Slave	port-2,s
22 151	172.17.3.151	2006-02-13 15:22:46	Master-Slave	port-1,s
23 151	172.17.3.151	2006-02-13 15:22:43	Master-Slave	up-g,0
24 151	172.17.3.151	2006-02-13 15:22:43	Master-Slave	g-5,ms

Buttons for ACK, Clear, Clear All, Alarm Type, Severity, Device, Entity, Port, and Search are visible on the right.

## Profile Management

The function of profile management for VigorCMS is to provide an interface for operators to do the configuration management more quickly. It can do the configuration to many devices and ports at the same time by using the given profile. Currently, we provide line profile, alarm profile, and ATM traffic profile.

The profile management window shows the configuration for a Line Profile:

- Profile Name:** Default\_AnnexE
- Profile Content:**
  - Downstream Rate: Int Max Tx Rate(bps) 32736000, Int Min Tx Rate(bps) 32000, Max Int Delay(ms) 63, Fast Max Tx Rate(bps) 32736000, Fast Min Tx Rate(bps) 32000.
  - Upstream Rate: Int Max Tx Rate(bps) 8160000, Int Min Tx Rate(bps) 32000, Max Int Delay(ms) 16, Fast Max Tx Rate(bps) 8160000, Fast Min Tx Rate(bps) 32000.
  - Downstream SNR Margin: Target SNR Margin(1/10dB) 60, Max SNR Margin(1/10dB) 310, Min SNR Margin(1/10dB) 0.
  - Upstream SNR Margin: Target SNR Margin(1/10dB) 60.

Buttons for Save, Delete, and Deploy are at the bottom.

## Report

The function of report for VigorCMS is to provide an interface for operators to export, save and print some statistic data of VigorCMS database. Currently, we provide alarm history, and Long Term PM report.

The report selection window shows the following configuration:

- Report Name:** Alarm History Report
- Input Parameter:**
  - Start Date: 2005-10-26 00:00:00
  - End Date: 2005-10-26 23:59:59
  - Severity: All
  - Alarm Type: All

Buttons for Apply and Cancel are at the bottom.