

Brickcom

PC Based Network Video Recorder
BRC-64
User's Manual

Quality Service Group

Product name:	PC Based Network Video Recorder (BRC-64)
Release Date:	2010/
Manual Revision:	V0.04
Web site:	www.brickcom.com
Email:	technical@brickcom.com info@brickcom.com
Made in Taiwan.	©2009 Brickcom Corporation. All Rights Reserved

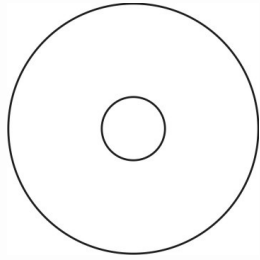
Table of Contents

Package Contents	1
Overview	2
System Requirements	3
Software Installation	4
Start with EasyConfig	11
Start with PC-NVR.....	18
Configure the PC-NVR	21
Live View	21
Setting	22
Schedule Record	30
Event	39
Lock.....	45

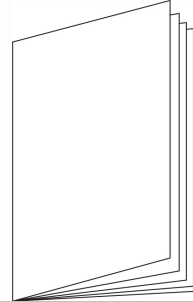


Package Contents

a. Brickcom Software Kit CD



b. Quick Guide

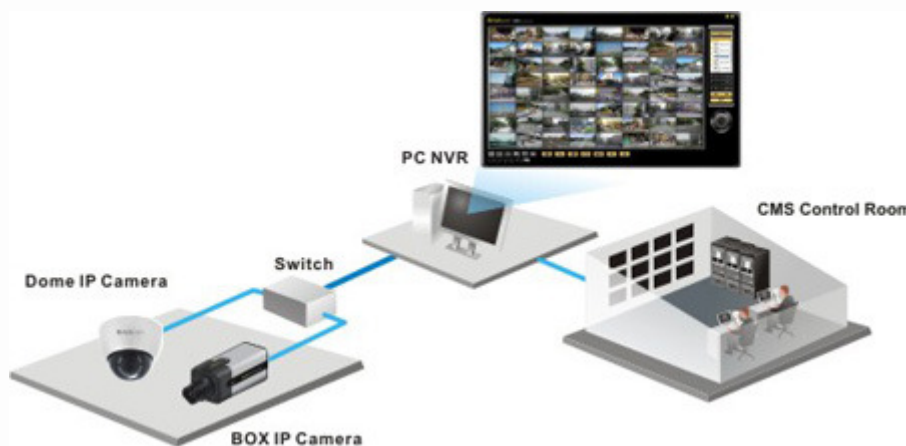


Overview

The Brickcom BRC64 is an advanced PC-based NVR that allows users to manage up to 64 Brickcom IP cameras for live viewing and video recording. With the support of Mega-pixel resolution and H.264 compression, it uses less bandwidth while offering the optimal image viewing/recording quality.

It provides “Smart Camera Search” and “Smart Motion Detection,” as well as robust event configuration, which enables easy management and setup of the entire IP surveillance system. Flexible recording options, such as manual, event-triggered, scheduled or continuous; plus support for different frame rates of live viewing and recording are available for efficient use of disk space. E-MAP gives users a full outline of the monitored areas and makes it possible to gain instant access to any Brickcom IP camera on the specific site.

With the help of Brickcom BRC64 along with its robust IP cameras, users can quickly build a secure IP surveillance system in an efficient manner.



System Requirements

Operating System

Microsoft Windows XP Home Edition SP2

Microsoft Windows XP Professional SP2

Computer

IBM PC/AT Compatible

CPU

Pentium 3GHz or faster

Memory

1024 MB or more

Monitor

1024 x 768 pixels or more, 24-bit True color or better

Network Interface

10/100Mbps Network interface card must be installed

Web Browser

Microsoft Internet Explorer 6.0 SP2

CD-ROM Drive

It is necessary to read the operating instructions in the provided CD-ROM.

Adobe Reader

It is necessary to read the operating instructions in the provided CD-ROM.

- Audio function will not be working if a sound card is uninstalled on PC. Audio may be interrupted depending on the network environment.

Software Installation

Insert the Installation CD into the CD-ROM driver.

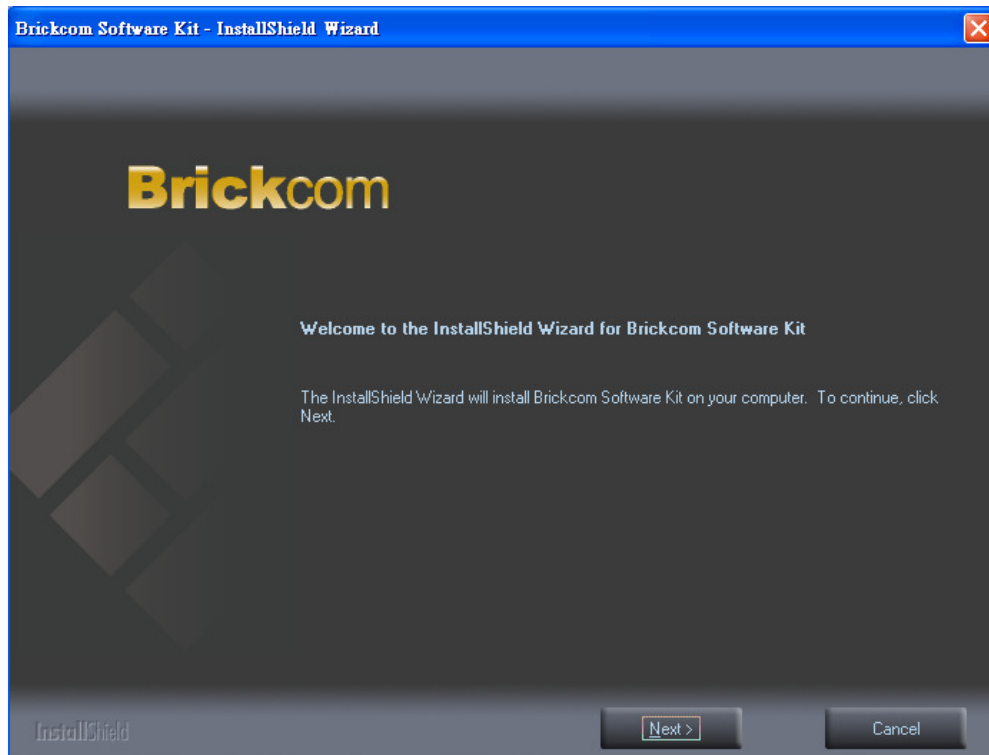
Run Auto run Tool from the CD-ROM directly to start the installation.

For the first time of installing Brickcom software kit, select a desired language for the interface. The available languages are listed in the scroll box.

Click "Install" and follow the steps to install the easy configuration wizard on user's computer.

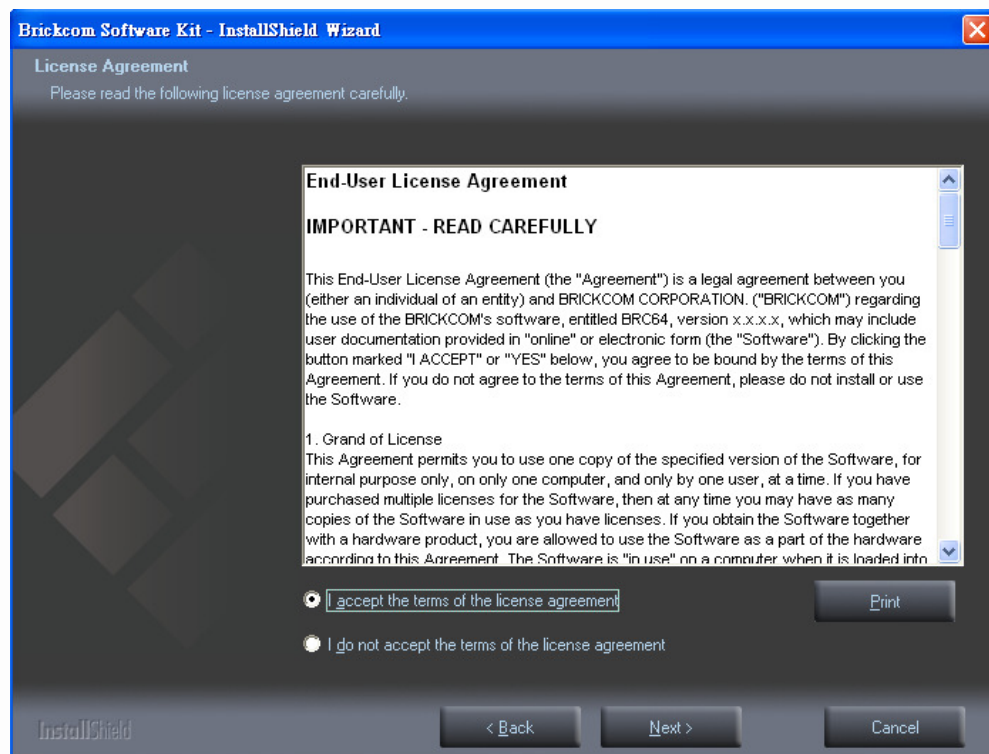


In the Install Shield Wizard dialog box, click <Next> to continue.

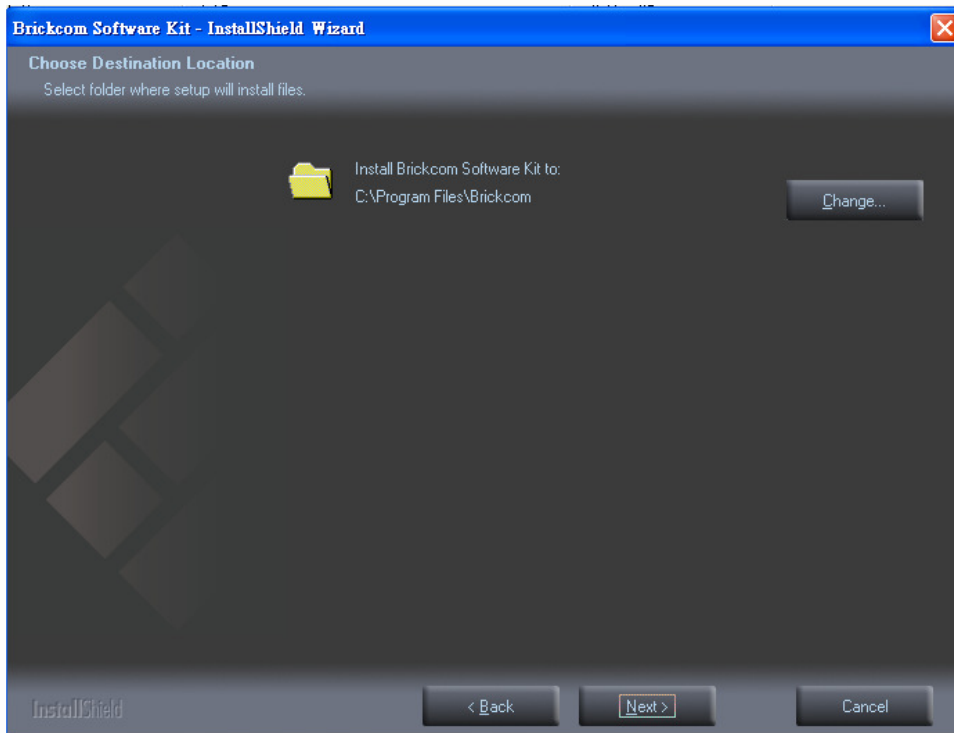


Check the option "I accept the terms of the license agreement".

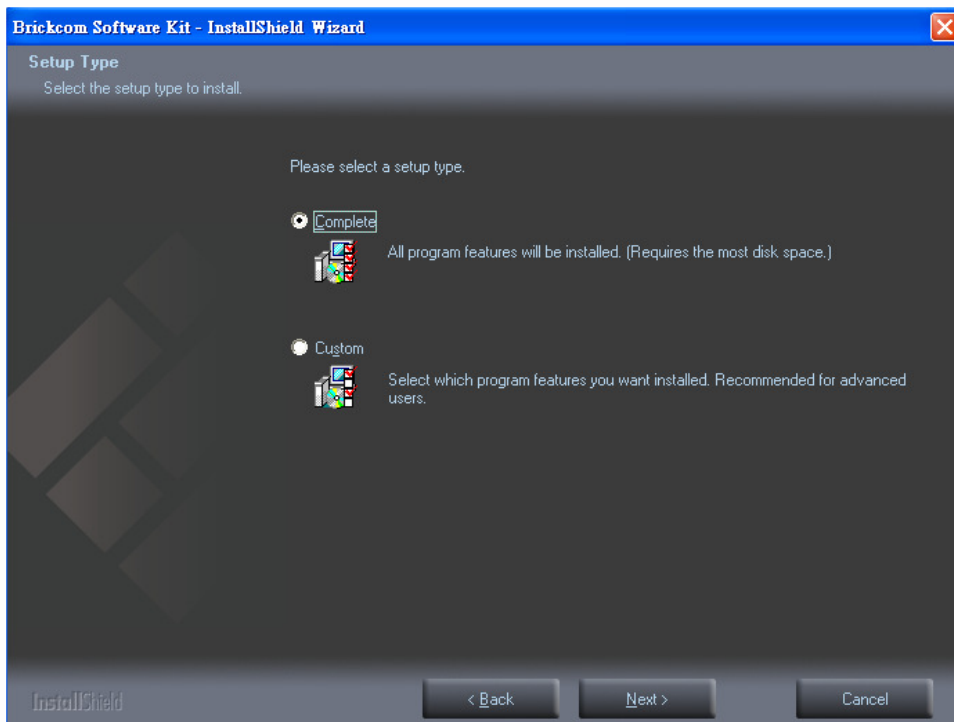
Click <Next> to continue.



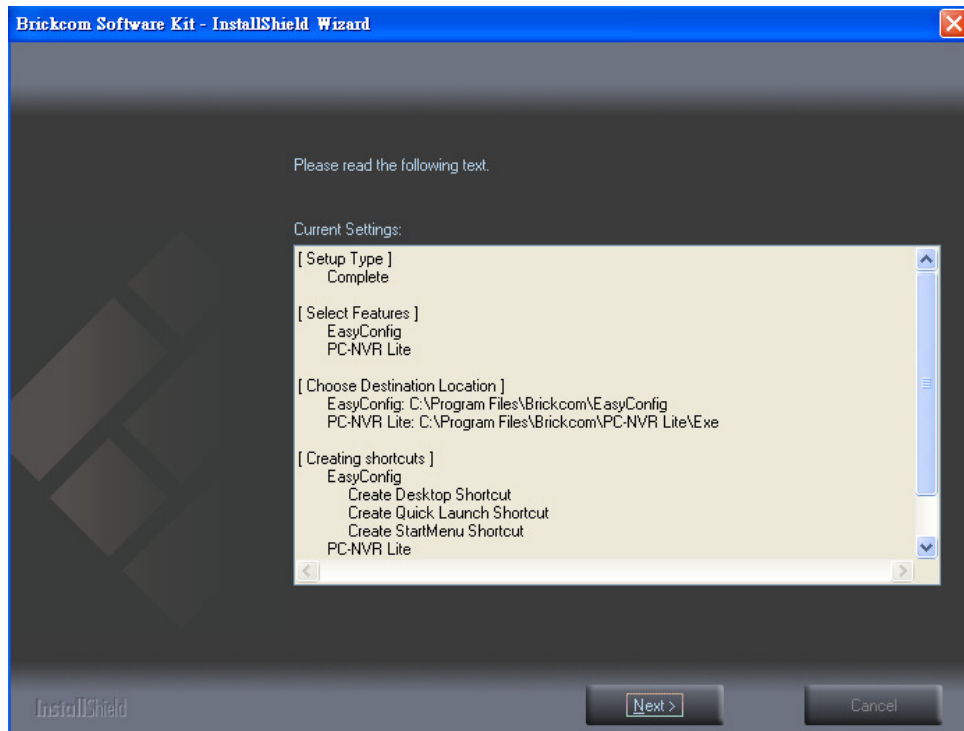
Select appointed folder where setup will install files to. Click **<Change>** to modify the installation directory. Click **<Next>** to continue.



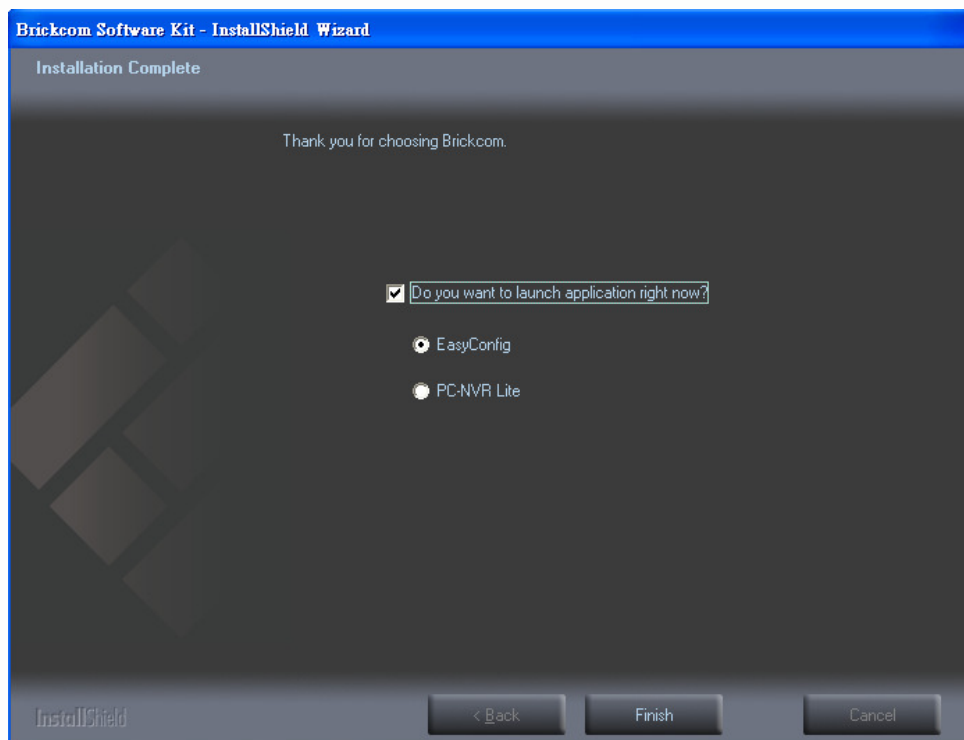
Select either "Complete" setup type or "Custom" setup type to install the System. **If COMPLETE SETUP TYPE is selected**, install **all program features** into the default directory. Check the option **"Complete"**, and then click **<Next>**. All program features will be installed.



Display the installation information. Click <Next> to continue.



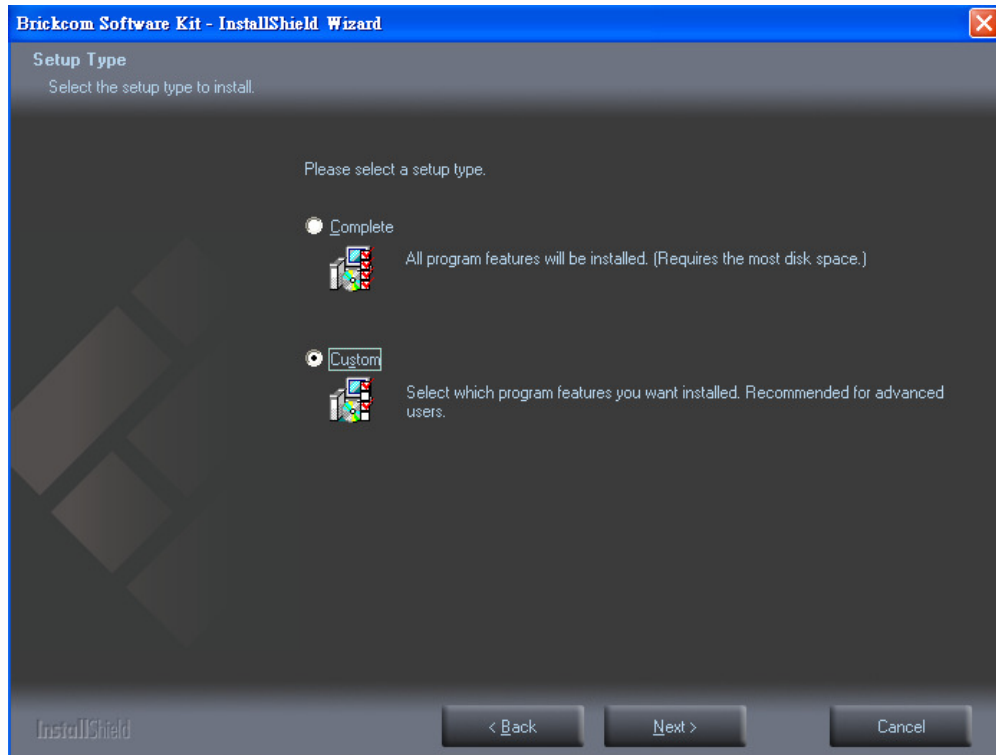
Select either EasyConfig or PC-NVR to launch.



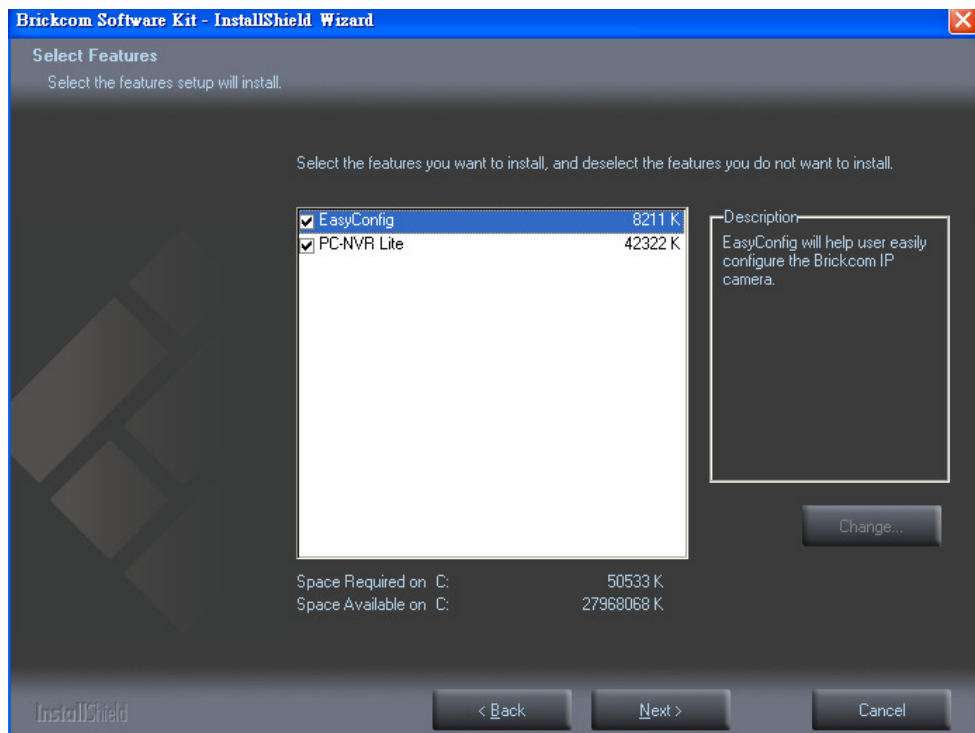
If CUSTOM SETUP TYPE is selected

Install the system to a preferred directory. Or select whichever program feature(s) to install. This is recommended for advanced users.

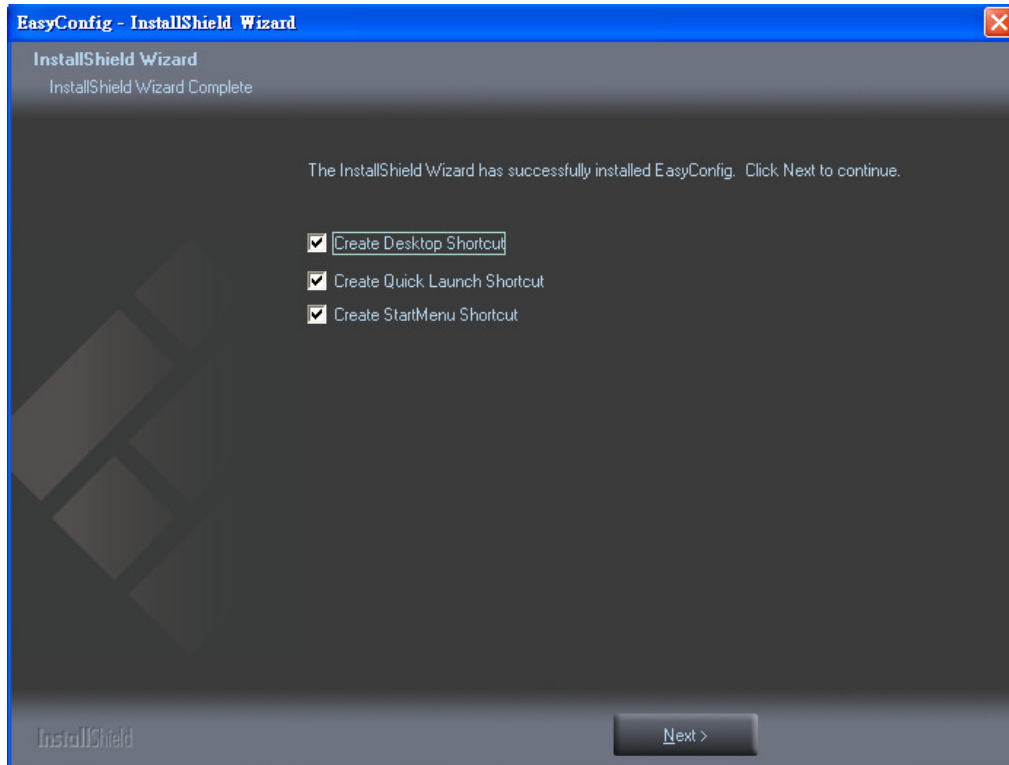
Check the option “**Custom**”, and then click <Next>.



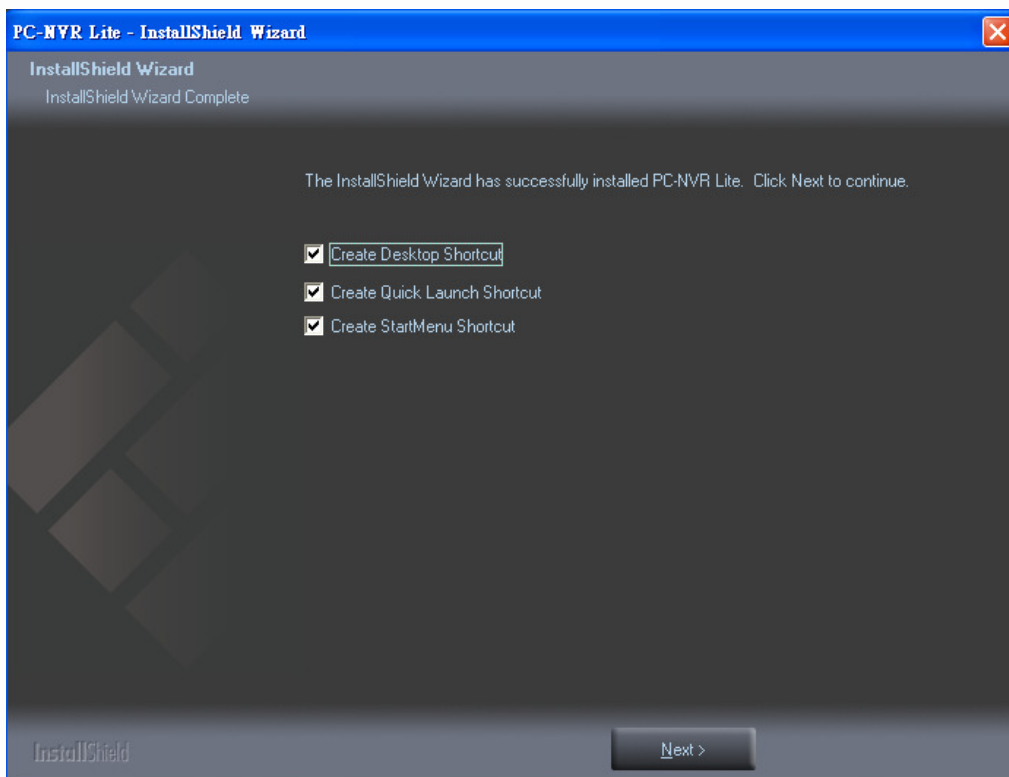
Select either EasyConfig or PC-NVR or both of the features to install. Click <Next> to continue.



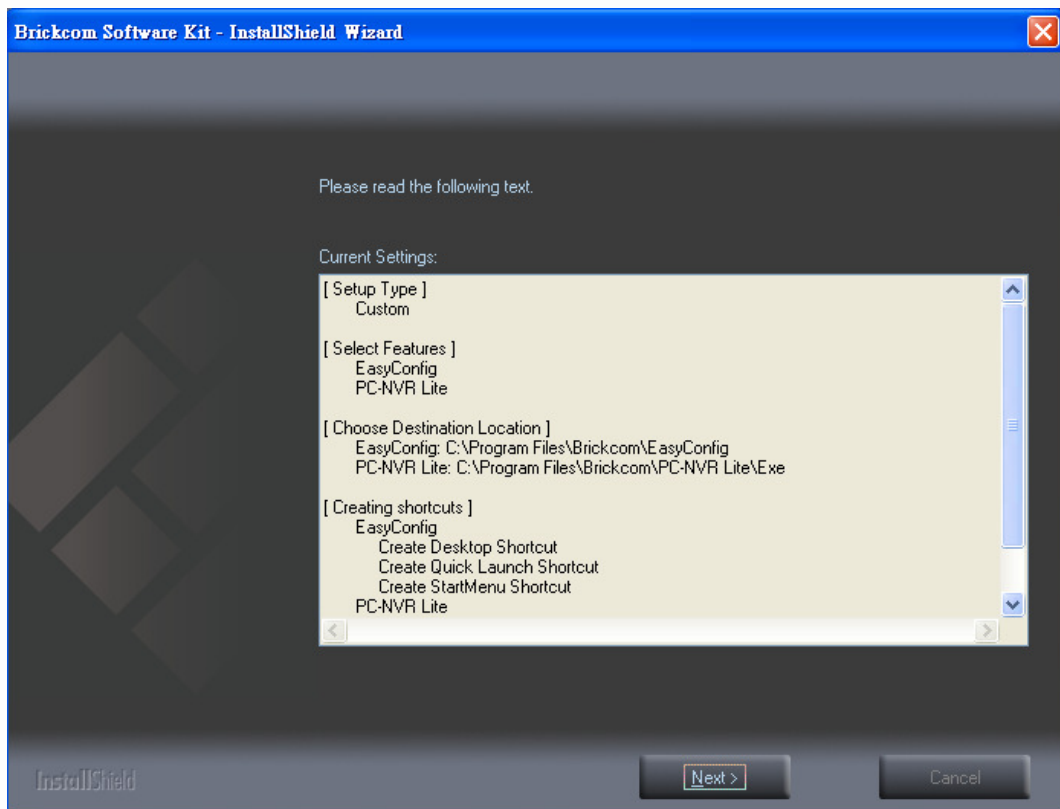
Select to create the EasyConfig shortcuts, click <Next> to continue.



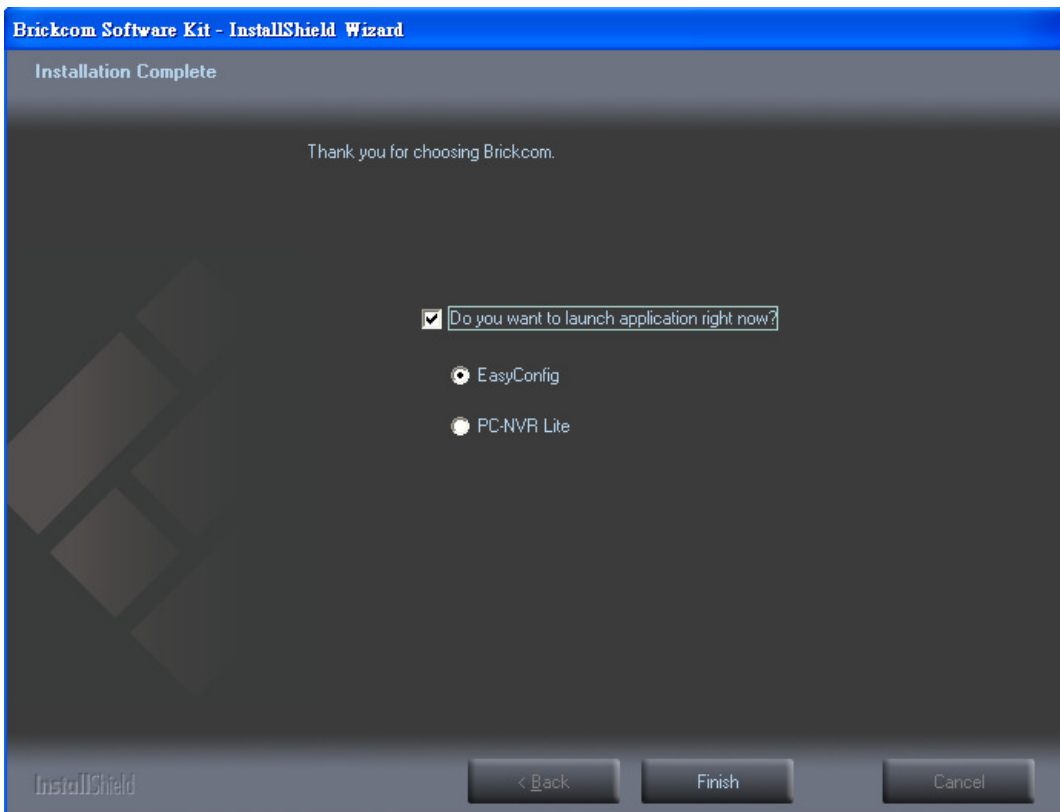
Select to create the PC-NVR Lite shortcuts, click <Next> to continue.



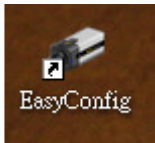
Display the installation information. Click <Next> to continue.



Select either EasyConfig or PC-NVR to launch.



Start with EasyConfig



Double click on the shortcut icon on the desktop. Note that this is only available if the "Shortcut Selection" component is installed.

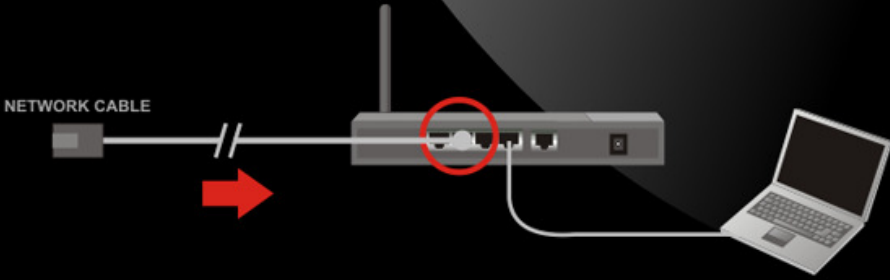
Do not check the option box if user would like to check the hardware installation settings, Otherwise check <Skip the hardware installation> to skip the hardware connection checking, the program will automatically search for the Network Camera in the Intranet. Click <Start> to continue.



Brickcom

Connection

1 Plug one end of the supplied network cable into your network switch or router.

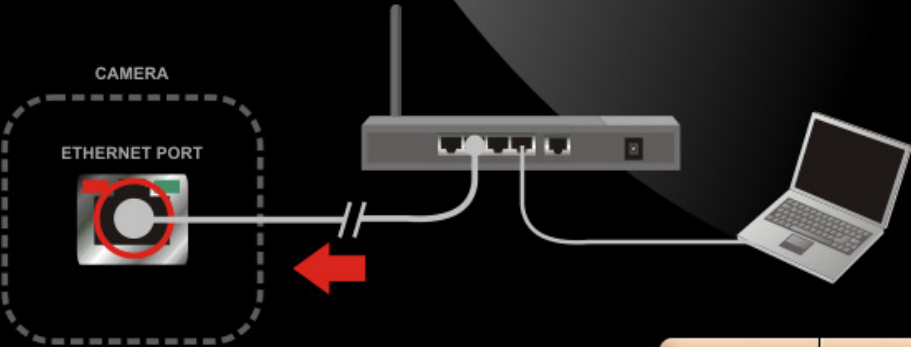


NETWORK CABLE

Diagram illustrating the first step of the connection process. A network cable is shown being plugged into the Ethernet port of a network switch or router. A red arrow points to the cable, and a red circle highlights the Ethernet port. A laptop is connected to the switch.

Brickcom

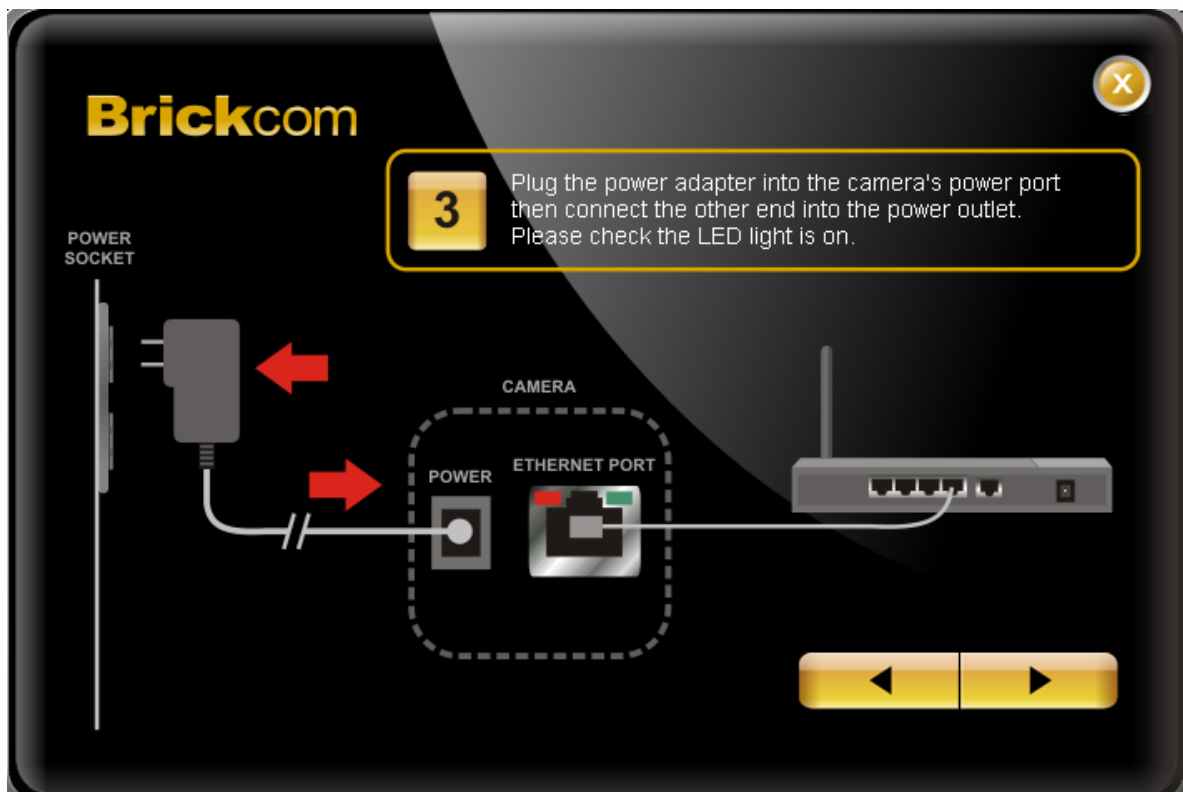
2 Plug the other end of the supplied network cable into the camera's Ethernet port.



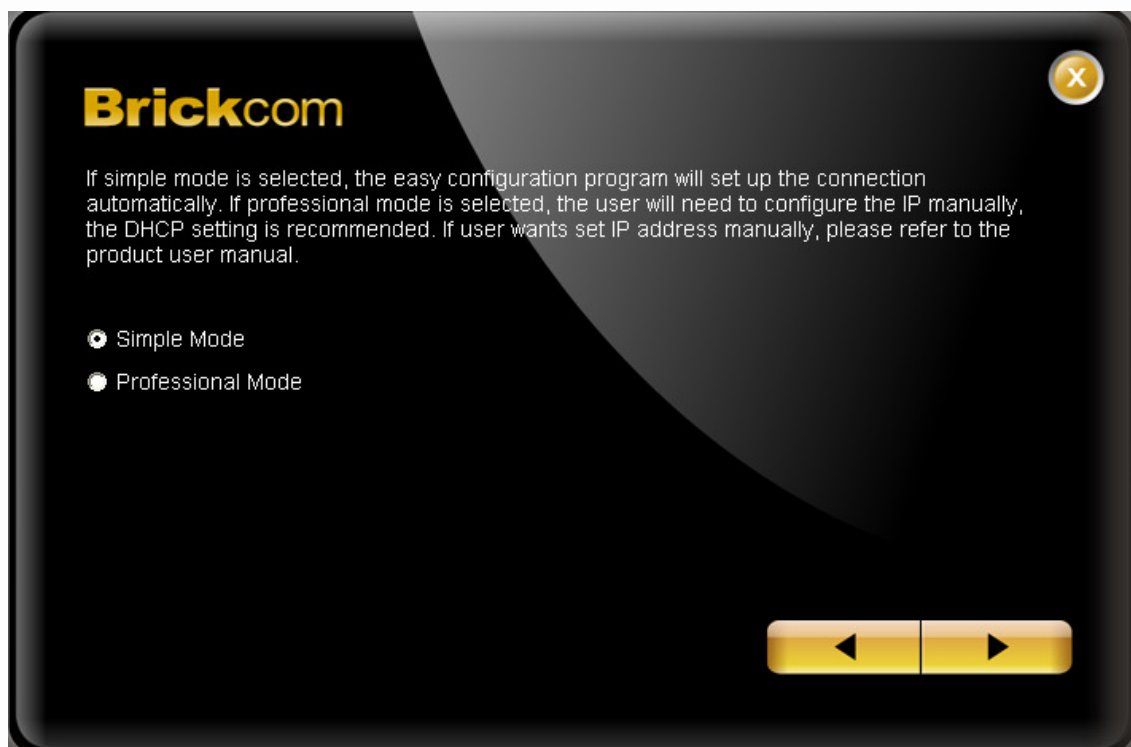
CAMERA

ETHERNET PORT

Diagram illustrating the second step of the connection process. The other end of the network cable is shown being plugged into the Ethernet port of the camera. A red arrow points to the cable, and a red circle highlights the Ethernet port on the camera. The network switch and laptop are also shown.

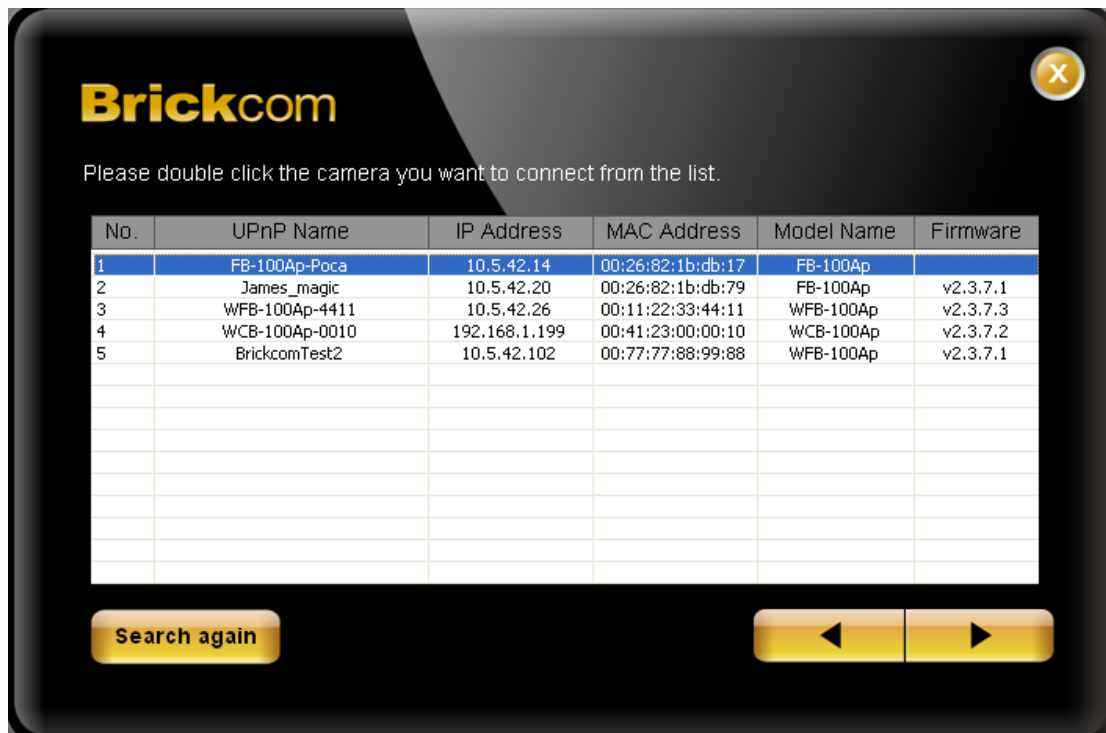


User can either select simple mode or professional mode for network camera IP setting. If simple mode is selected, the easy configuration program will set up the connection automatically. If professional mode is selected, the user will need to configure the IP manually.

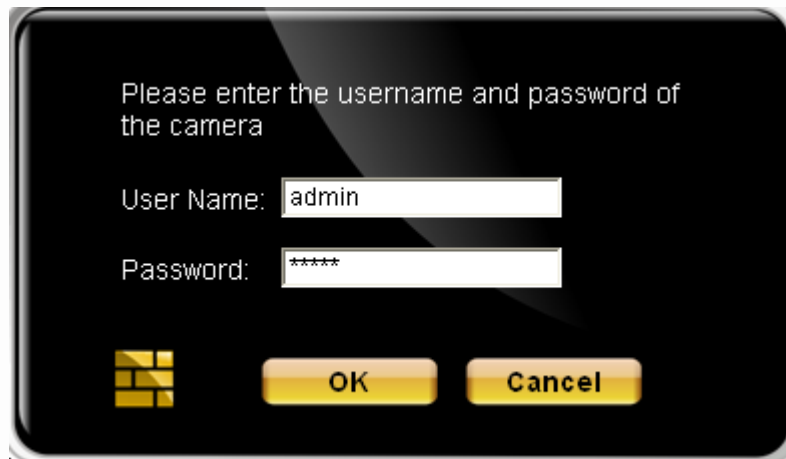




There may be many Network Cameras in the local network. Users can differentiate the Network Cameras with the UPnP name. Select the Network Camera you want to connect from the survey list



Please enter the username and password if other than default setting. The username and password are assigned as “**admin/admin**” as default.

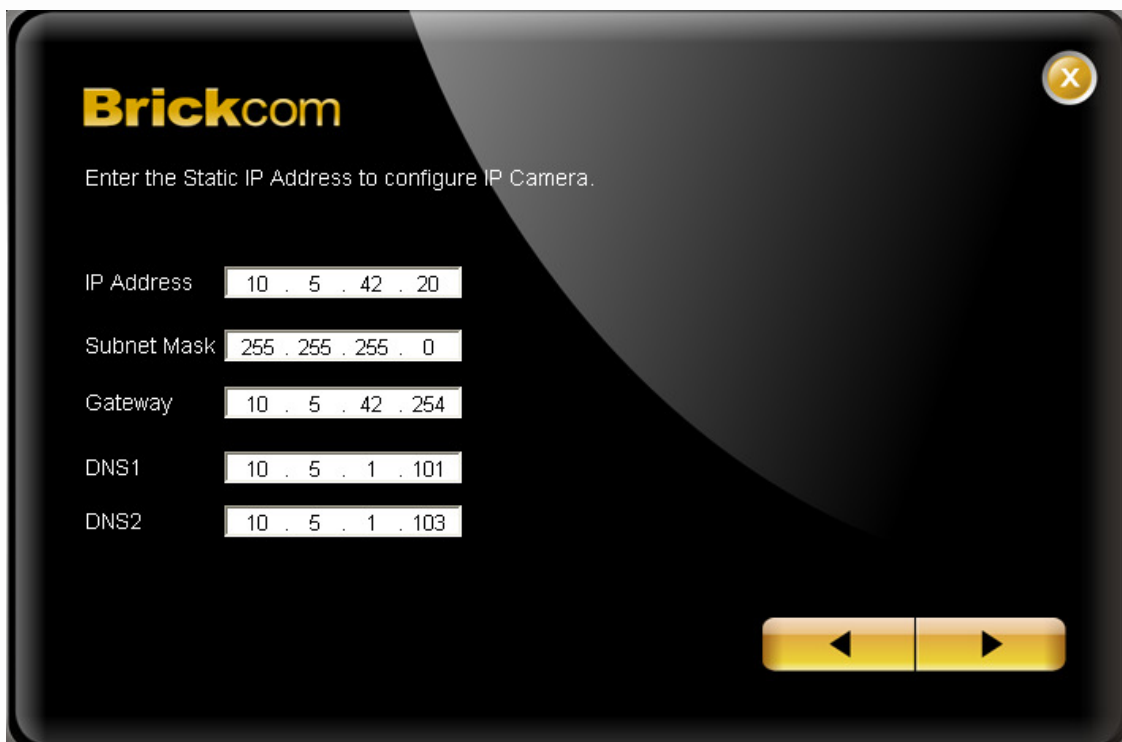


A black dialog box with rounded corners. At the top, it says "Please enter the username and password of the camera". Below this are two input fields: "User Name:" with "admin" entered, and "Password:" with "*****" entered. At the bottom left is a small yellow grid icon. At the bottom center are two yellow buttons labeled "OK" and "Cancel".

The DHCP setting is recommended. User can either select <Remains the same setting> as IP camera or set IP address manually, if user wants set IP address manually, please refer to the product user manual.



A black dialog box with rounded corners. At the top left is the "Brickcom" logo in yellow. At the top right is a yellow close button with an 'X'. Below the logo, it says "Select the IP Address settings.". There are three radio button options: "Remains the same" (selected), "Automatically obtain an IP Address (DHCP)", and "Set IP Address configuration manually". At the bottom right are two yellow navigation buttons with left and right arrows.

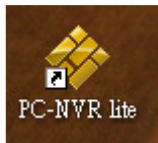


Brickcom

After finish setting, the connection successful or fail showed. If connection failed, user can either try again or quit the installation. User can either select PC-NVR or Live View to continue or click <X> on the top right of the screen to finish the installation. Click <Live View> button to view live video of connected IP Camera. Click <PC-NVR> to start the PC-NVR program.



Start with PC-NVR



Double click on the shortcut icon on the desktop. Click PC-NVR lite icon to start the PC-NVR. Note that this is only available if the "Shortcut Selection" component is installed.

The user name and password are assigned as "**admin/admin**". Click <OK> to login.

Check <Save user name and password> to save time from entering username and password every time the PC-NVR starts. Click <OK> to login.

With the Remote Live View controller, remote users may watch up to 64 channels real-time video from remote live streaming servers.



Main Window



The usage and function of each button will be briefly described as follows.



Click this button to start searching for UPnP devices within the LAN.



Volume increase/Volume decrease.



Volume on/off.



Live View - Click on the <Live View> icon to view the live video. **Note** that after viewing recorded video, this button needs to be clicked to switch back to the live mode.



Setting – Click on the <Setting> icon to set up the configuration.



Schedule record – Click on the <Schedule Record> icon to schedule the recording time frame for the sites.



Playback – Click on the <Playback> icon to view recorded video stored in the HDD of the connected IPCam.



Event – List of all system and camera event log.



Snapshot – Click on the <Snapshot> icon to save a snapshot of the current window(s).

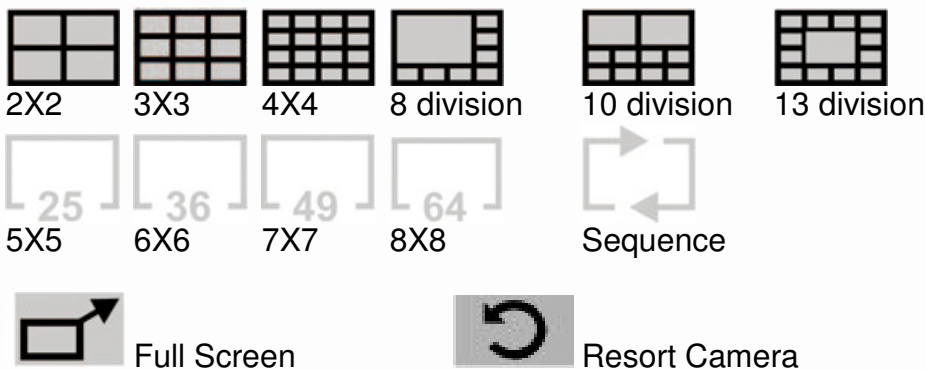


Emap – Click on the <Emap> icon to open the E-Map program. The E-Map is a program that allows the user to illustrate the positions of the cameras on a self selected image.



Lock - Click on the <Lock> icon to lock the PC-NVR to protect the works on the PC-NVR when the user needs to be away from the computer for a while. This function is the same as the computer's screensaver.

Display Modes



Display Modes - to view the image in a multiple window mode. The selections include 1-window, 4-window, 9-window, 16-window, 8-window, 10-window, 13-window, 25-window, 36-window, 49-window, and 64-window modes.


Sequence –This function is used to set the displaying sequence.


Full Screen – Enlarge the Player window to fit full screen. Hit <Esc> to exit.

Resort Camera – Resort Display Window Grids; to rearrange camera images of connected sites in order.

Configure the PC-NVR

Live View

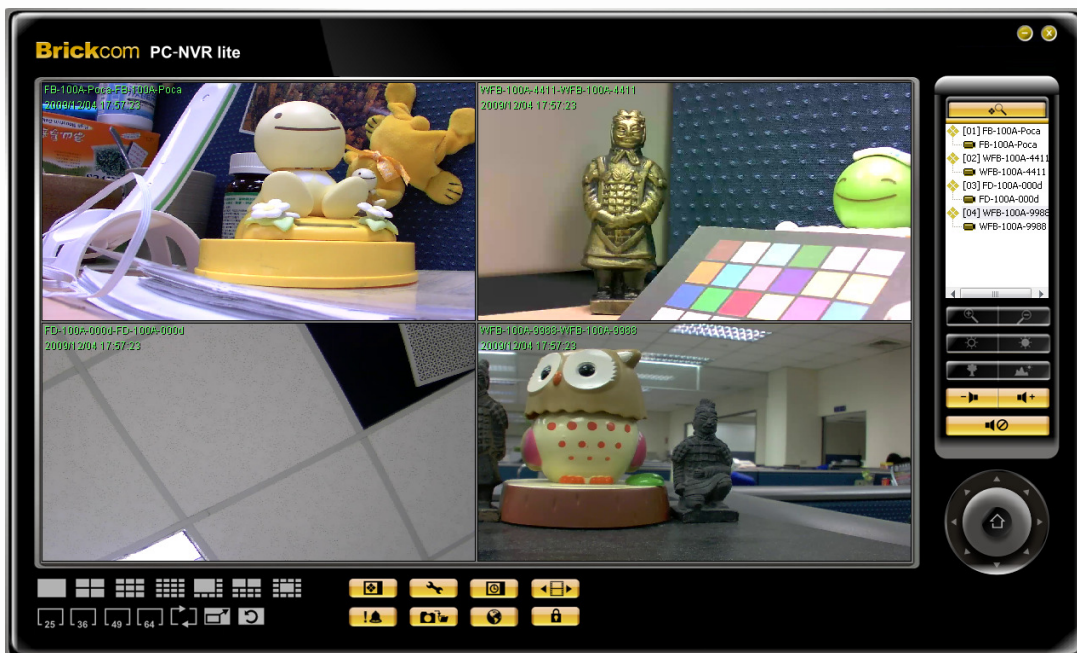
The user can view live video or connect to the connected IP Camera using the live view button. Click on the  <Live View> button to see the live view.

Click  button on the control panel to start searching for UPnP devices within the LAN.

The PC-NVR allows user to assign any site in the site tree to any grid of the main window.

Step 1: Click and hold the site you want to view the live video from the site tree on the control panel.

Step 2: Drag and drop it onto the window that you want to assign in.



Setting


The following sections are instruction of the management of the sites, which include add or remove sites and configurations.

Camera

Add/Remove a site

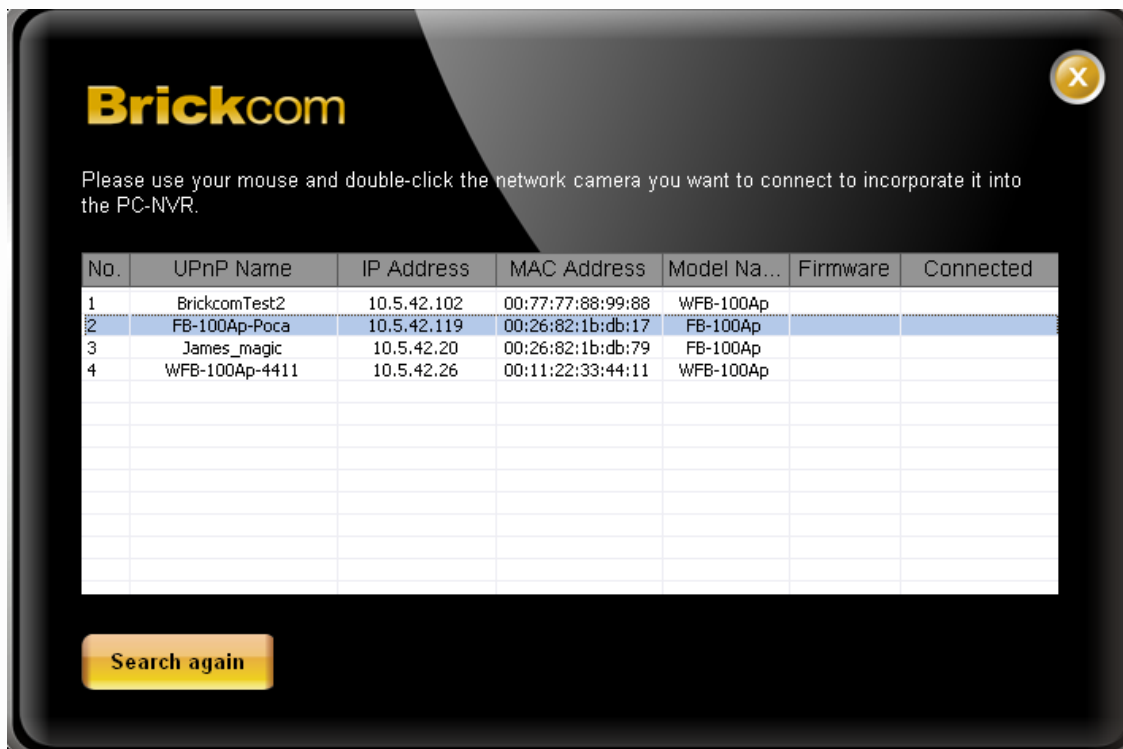
There are two ways to add a site. Up to 64 cameras (Sites) can be added to PC-NVR.

1 Setup the Site via UPnP Device Search

- 1.1 Click  button on the control panel to start searching for UPnP devices within the LAN.

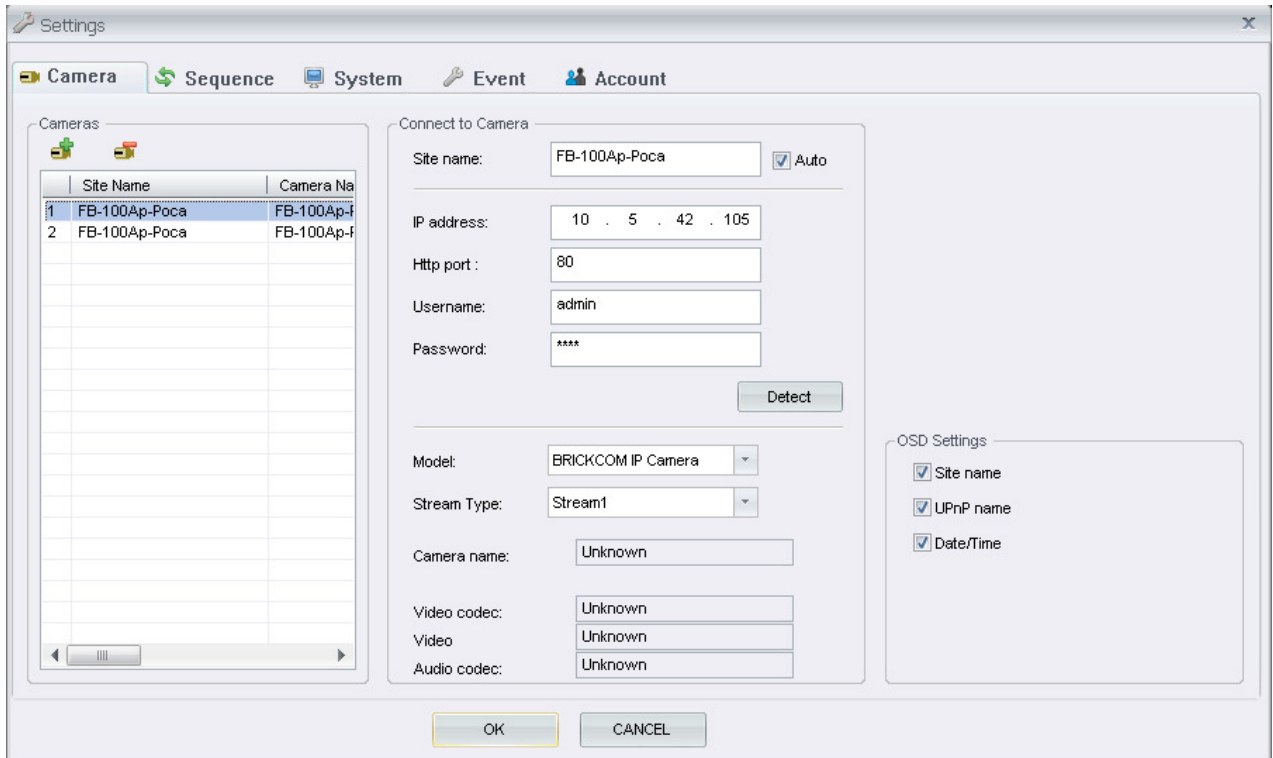




- 1.2 Click and select the Network Camera from the survey list and enter the user name, password and select the stream type from the drop-down menu. The user name and password are assigned as “**admin/admin**”.



2 Setup the Site Manually

2.1 Click on the  <Setting> icon and the figure below will be displayed.

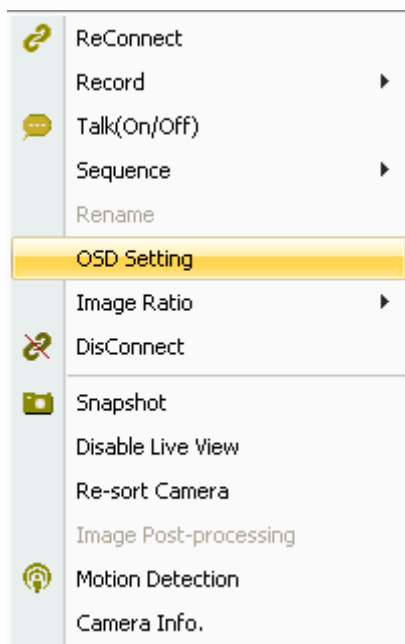


2.2 Click  button to add a site. Click  to remove it.

If an IP Camera is going to be added to the PC-NVR, enter the required information includes the site name, IP address, Http port, username, and password of the IP Camera. Click <Auto> to auto retrieved Site name from the name (UPnP name) of the camera you want to add to the PC-NVR. Select the <Model> and <Stream Type> of the IP Camera from the drop-down menu. Click <detect> to check connectivity of IP camera. Click <OK> to complete the setting.

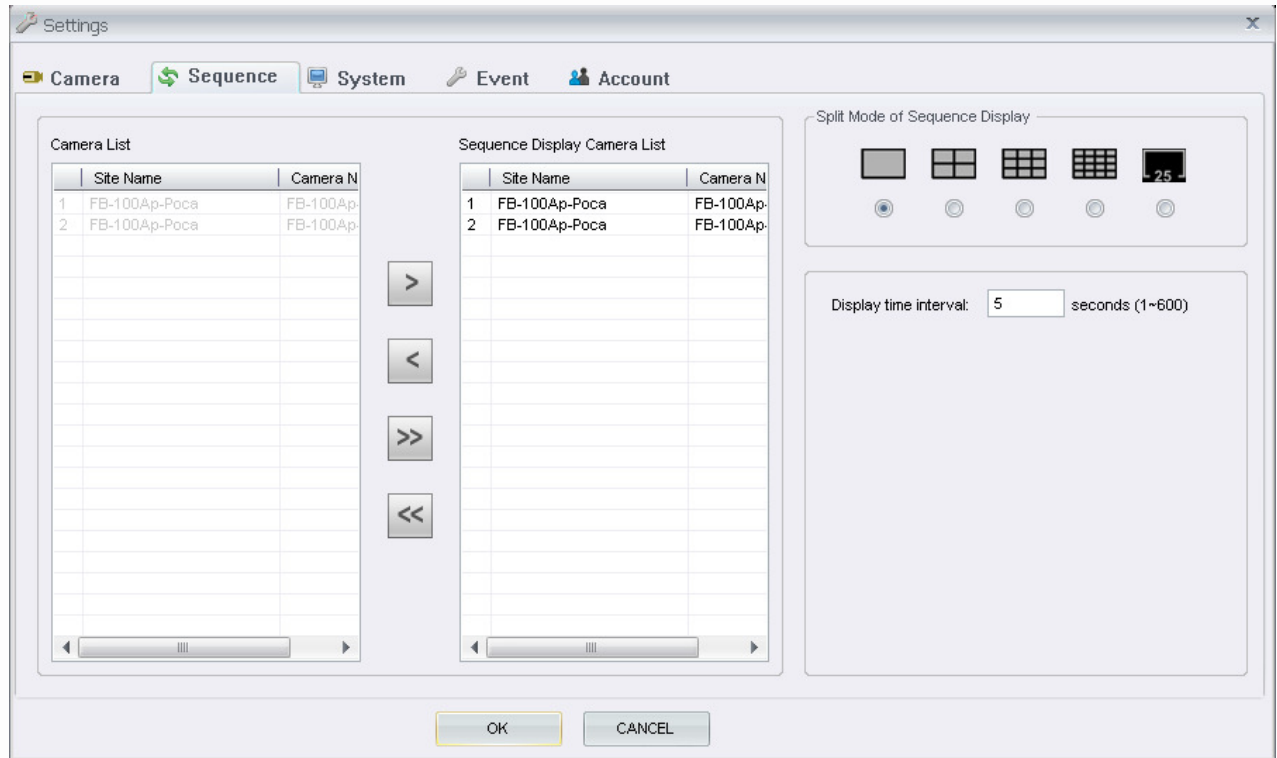
OSD Settings


“On-screen display” displays the camera data which includes site-name, UPnP name and Date/Time of connected IP camera on the live view screen. Click to select the options on the camera setting page or right click on a desired grid and select < OSD setting > from the pull down menu.



Sequence

This function is used to set the displaying sequence. There are two ways to add to the sequence.



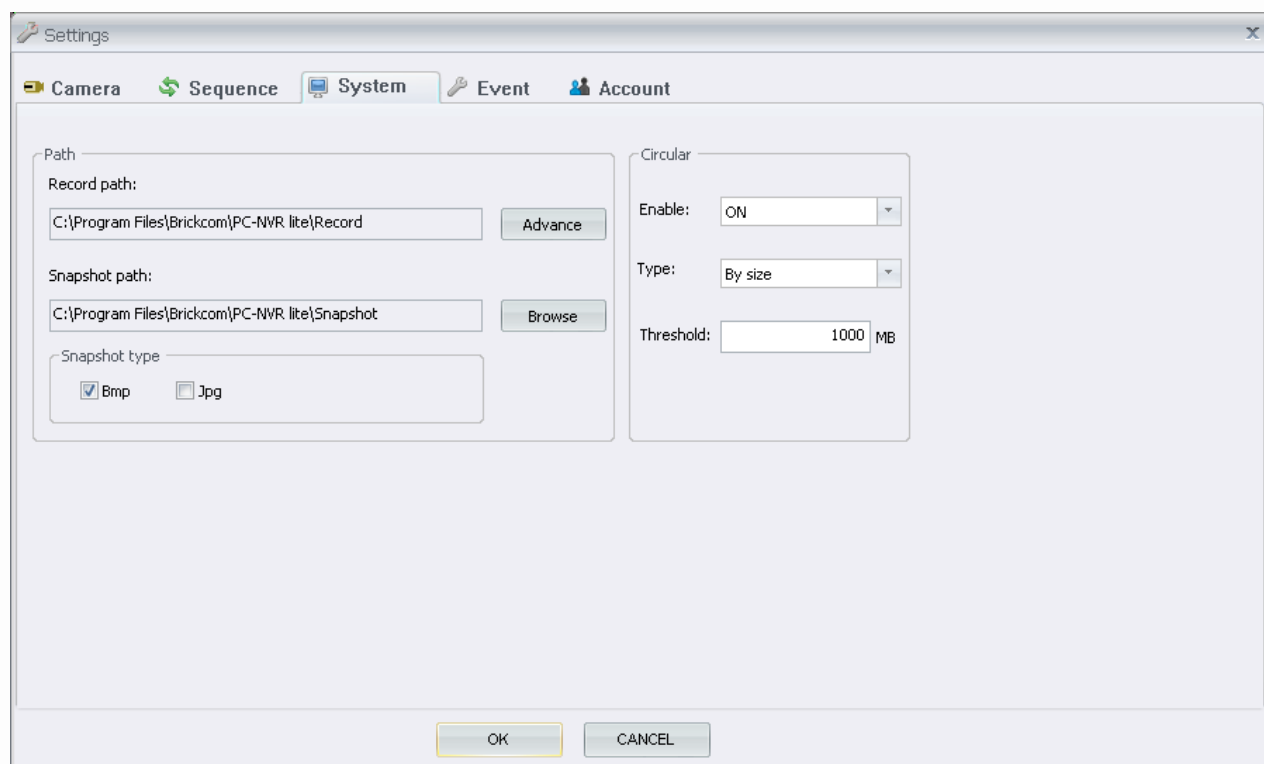
1. Click on the  <Setting> icon and choose <Sequence> to setup the sequence. Select Cameras from left to right to have the sequence list in order. You can setup the display time interval (1 to 600 seconds), and split mode (2*2, 3*3, 4*4, 5*5, 6*6). Click <OK> to save the settings.
2. Right click on a desired grids and select <Sequence> → <Add to Sequence> to add, or <Remove from Sequence> to remove. Note that when the sequence is added, a capital “S” will be shown on the icon.

System

The file path menu defines stored destination of recorded videos and snapshot. It is recommended to use the default folders.

<C:\Program Files\Brickcom\PC-NVR lite\Record> is the default path for recorded videos.

<C:\Program Files\Brickcom\PC-NVR lite\Snapshot> is the default path for snapshot.



Circular

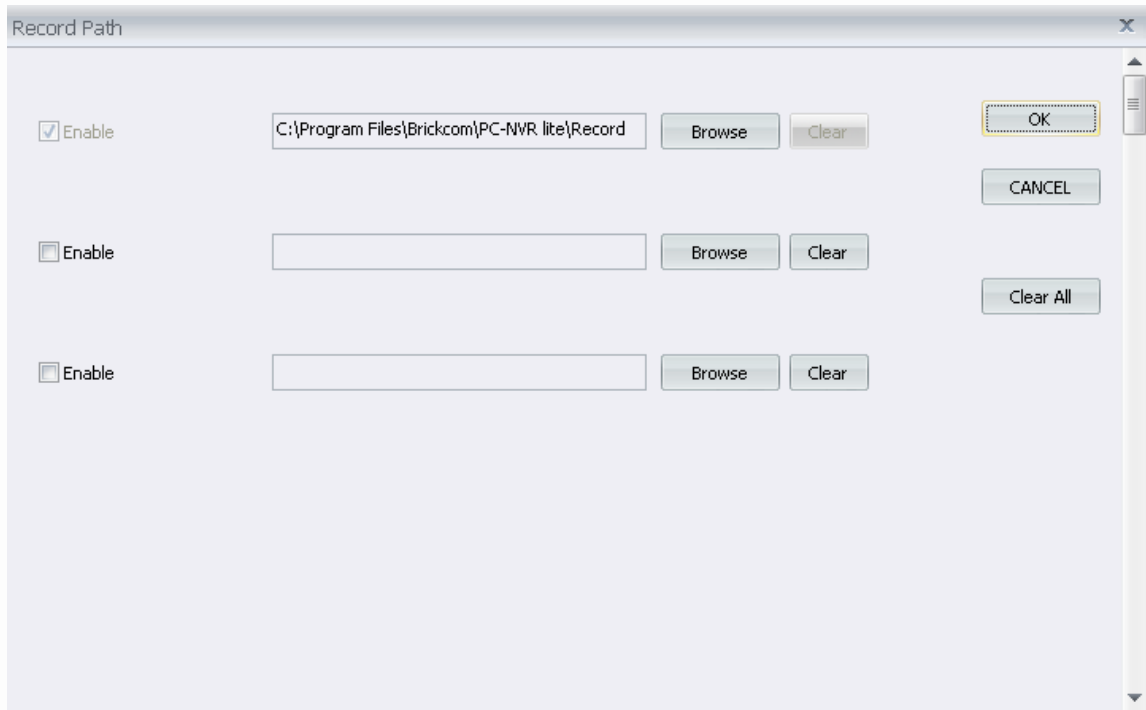
The Circular is used to adjust the HDD space usage of the PC-NVR.

Select <ON> to enable overwrite the earliest recorded data if saving folder is full.

If file circular is enabled, the circulation will as well be updated recording by the type and threshold.

Record Path

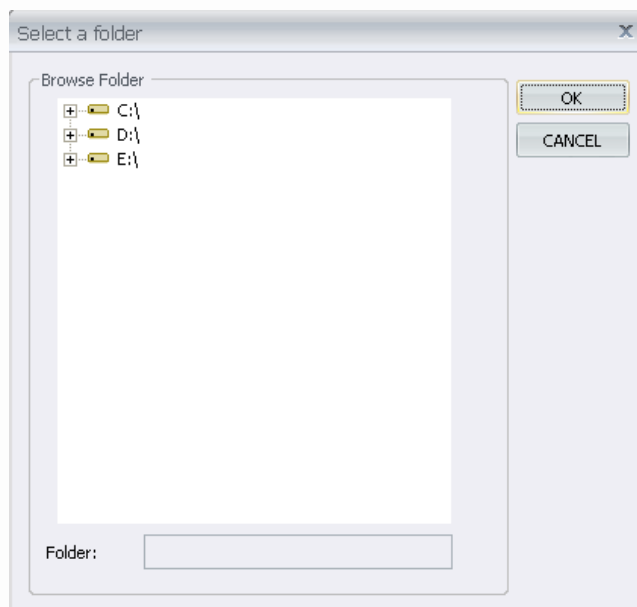
The recorded videos can be stored in more than one folder. Click on <Advance> and the following window will be shown



Check the “Enable” box and click <Browse> to set more destination folders. Click on <Clear All> will delete all folders except the first preset folder.

Snapshot Path

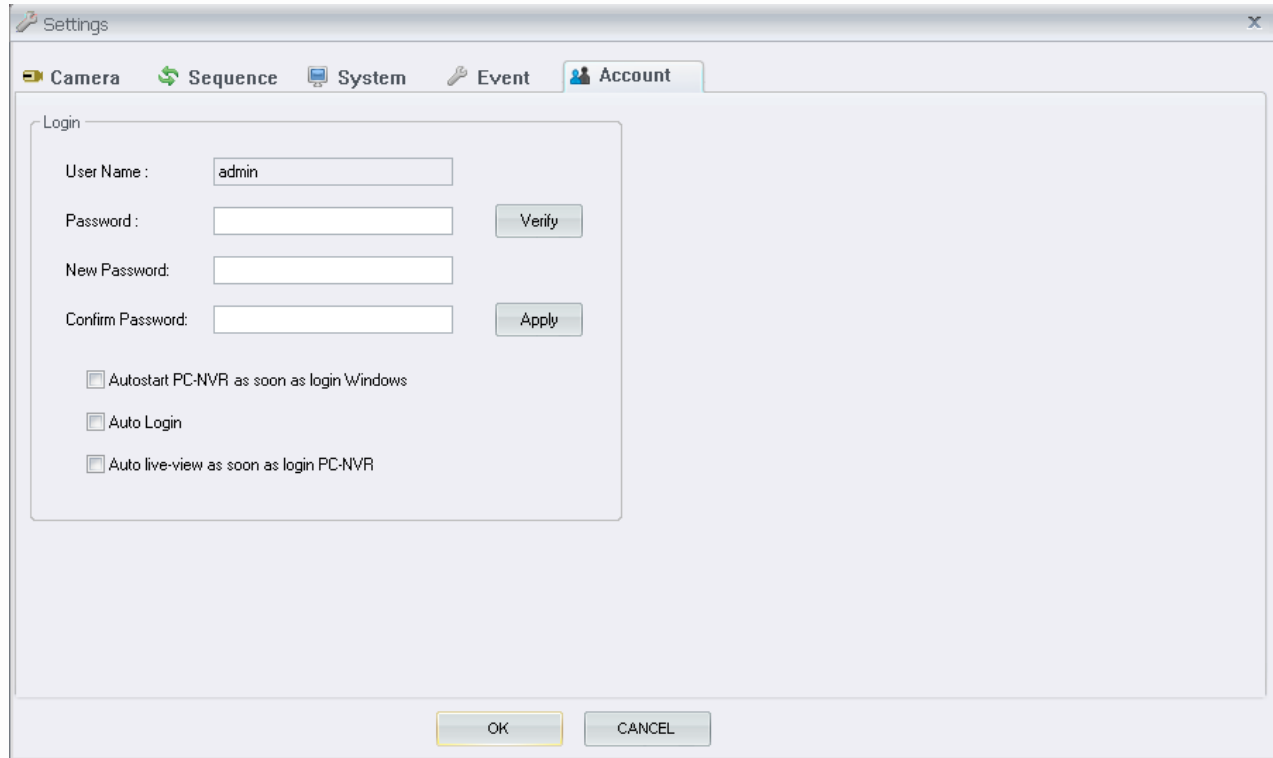
Click <Browse> to set desired destination folder as shown below. If more than one snapshot type is selected, then each snapshot is saved to 2 types of files. They are the same image, but in different formats.



Account

Account is for the management of administrator in the PC-NVR. The default username and password are assigned as **admin/admin**.

The user can edit options regarding login settings in this section. Administrator username and password is required to edit the setting.



The screenshot shows a 'Settings' window with the 'Account' tab selected. The 'Login' section contains the following elements:

- User Name:
- Password:
- New Password:
- Confirm Password:
- Buttons: 'Verify' and 'Apply'
- Checkboxes:
 - Autostart PC-NVR as soon as login Windows
 - Auto Login
 - Auto live-view as soon as login PC-NVR
- Bottom buttons: 'OK' and 'CANCEL'

Login

User can enter a set of username and password to be used for auto login. The “Verify” button can help the user to check if the username and password are correct.


Click <Apply> to save the settings.

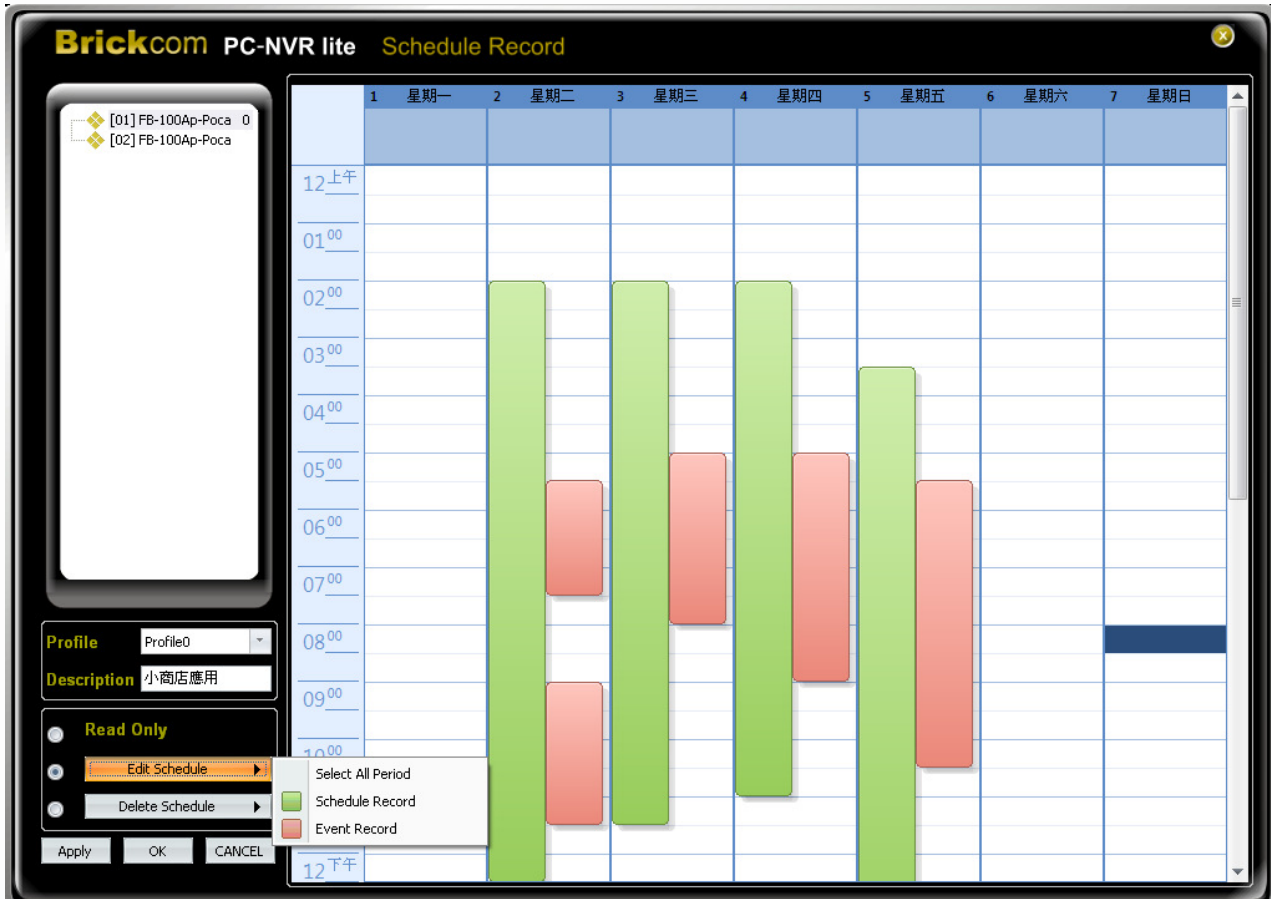
Click the first option “Start PC-NVR when Window Started” to request the computer to open PC-NVR in the mean time when the system startup.


Click the second option “Auto Login” to automatically login when the PC-NVR starts. Click the third option “Auto retrieve Live image When Login” to automatically connect to the sites in the start group when the PC-NVR starts.

Click <OK> to save the settings.

Schedule Record

Click on the  <schedule record> icon and the figure below will be displayed. The user can schedule specific time to record the videos to the local computer.



Select the camera you want to schedule the specific time to record the video and select a profile from the drop-down menu. When the same profile is selected, the same setting of schedule record will be applied to all cameras. Enter the description for each profile. Click and drag on the time frame table to schedule the specific time to record the video. When the sites are being recorded, the live view displaying window of the sites will show a . Click <OK> to save and exit the Schedule Record or click <Apply> to save and continue the schedule record setting. The recorded files will be saved to the default folder “\PC-NVR lite\Record\”.

Read Only – For reading schedule only.

Edit Schedule

- **Select All Period**

Schedule will be set to record all normal and event videos at all times.

- **Schedule Record**

Schedule to record only the normal videos within the selected time frame.

- **Event Record**

Schedule to record only the event videos within the selected time frame.

Delete Schedule

- **Delete One Period**

Select to manually clear the schedule setting.

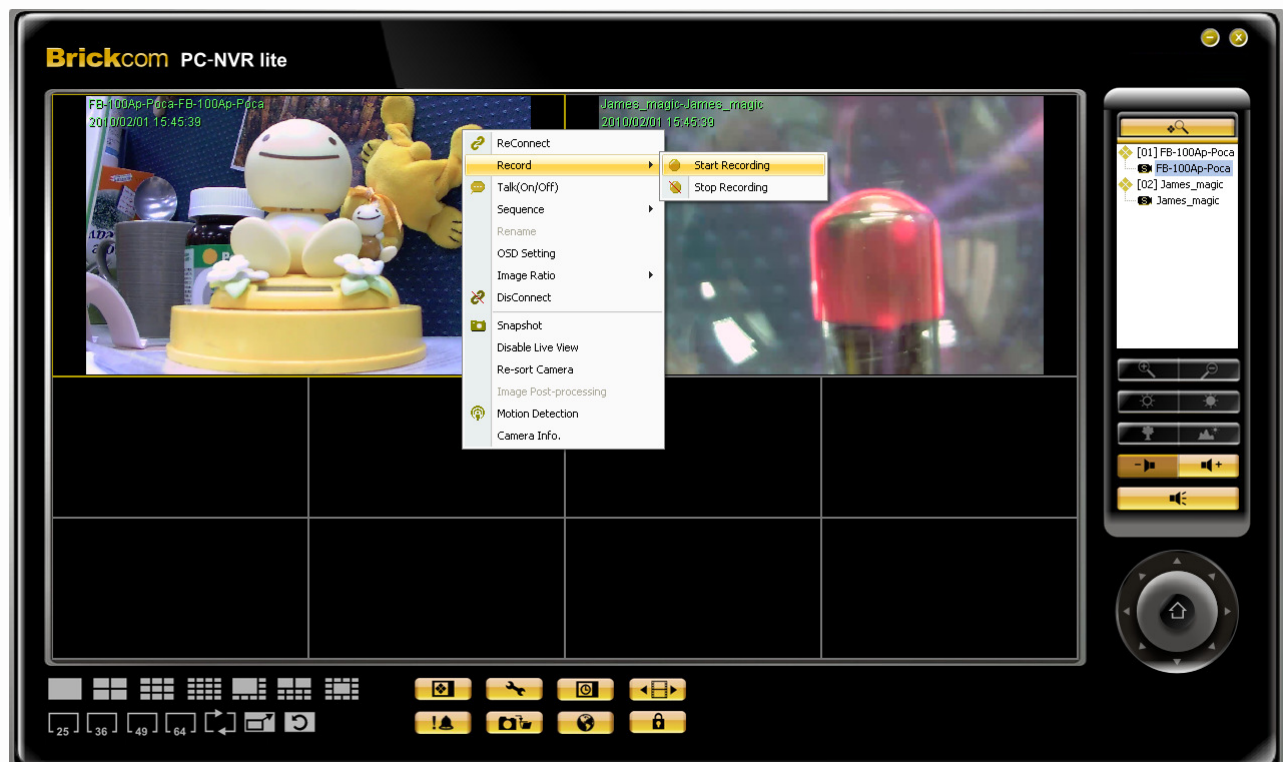
- **Delete All Period**

Select to clear up all the schedule settings.

Click <OK> to save and exit the Schedule Record or click <Apply> to save and continue the schedule record setting.

Instant Record

While the videos are scheduled to record, the user can also choose to instantly record live and playback video clips to the local computer as an option. Right click on a desired grid and select <Start Recording> to start recording, and <Stop Recording> to stop recording.




Adjust the display size


You can adjust the display size of the Live View window by right clicking on the window to display the camera control menu; select <Image Ratio> to adjust the size. The image ratio includes: Original, Fit, Original all and Fit all.





Playback


Click on the  <Playback> icon, the figure below will be displayed. This function allows the user to retrieve and play videos stored in the HDD.




 Backward/Play/Pause/Forward


Click on  to start playing back the video. The icon will change to showing that the video is now playing. Click on  again to pause playing back the video.

Backward

Click on  to play the video fast backward.


Forward

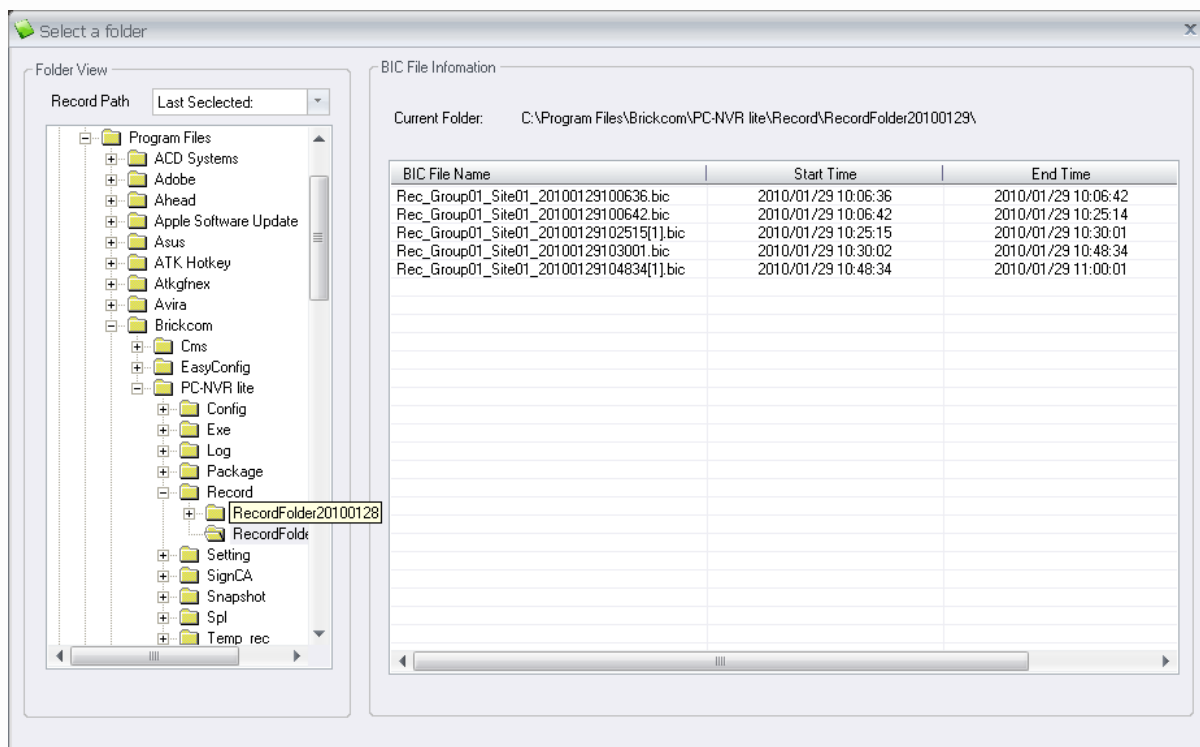
Click on  to play the video fast forward.

 Volume increase/Volume decrease.


 Volume on/off.

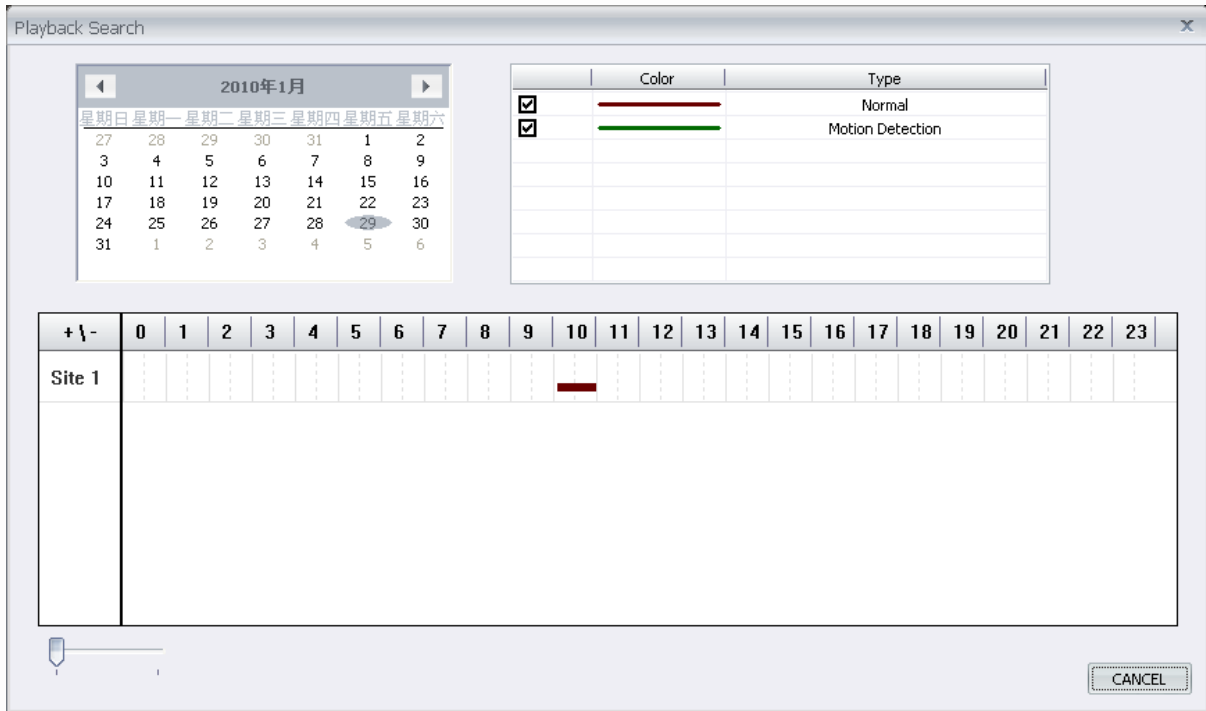
Open Video File

Click on the  <Open Video File> icon to open video files. Users can double click on the list to start the playback.




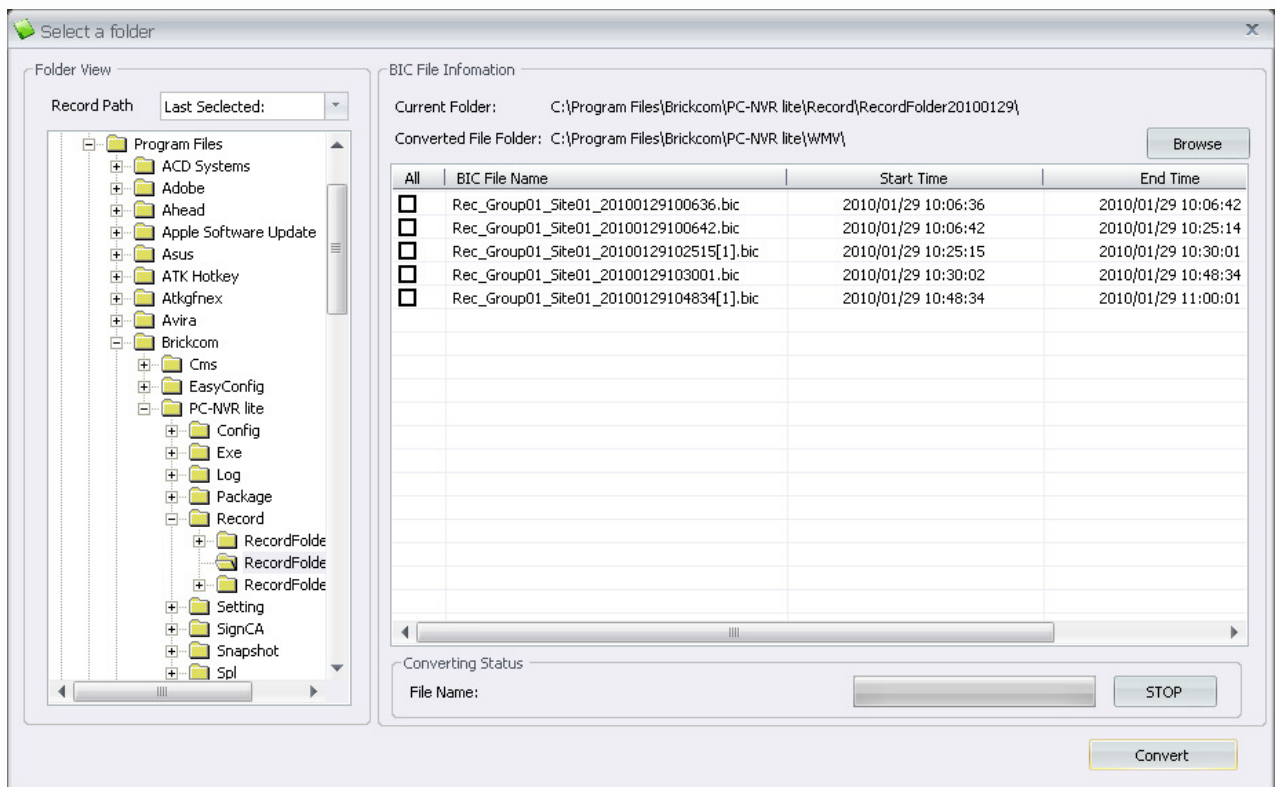
Search Video File

Click on the  <Search Video File> icon to search recorded files by date. Click the options to indicate normal and/or event video clips in the specific time frame.

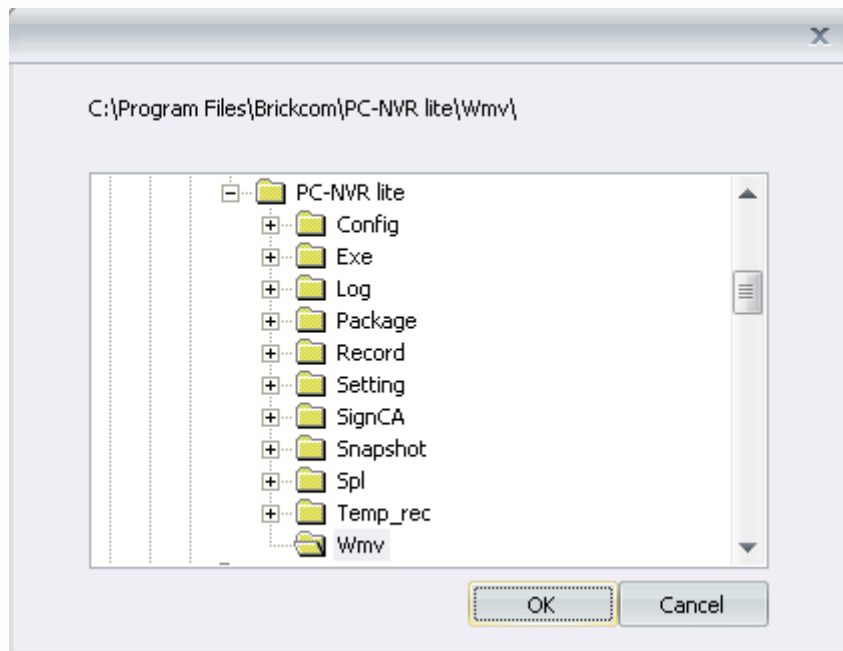


Convert Recorded File


Click on the  <Convert Recorded File> icon to open the video files and select the files you wish to convert. The converted files will be stored under folder C:\Program Files\Brickcom\PC-NVR lite\WMV. Click <Convert> to start conversion of files on the list, or if you wish to terminate the conversion, click <STOP> to abort.



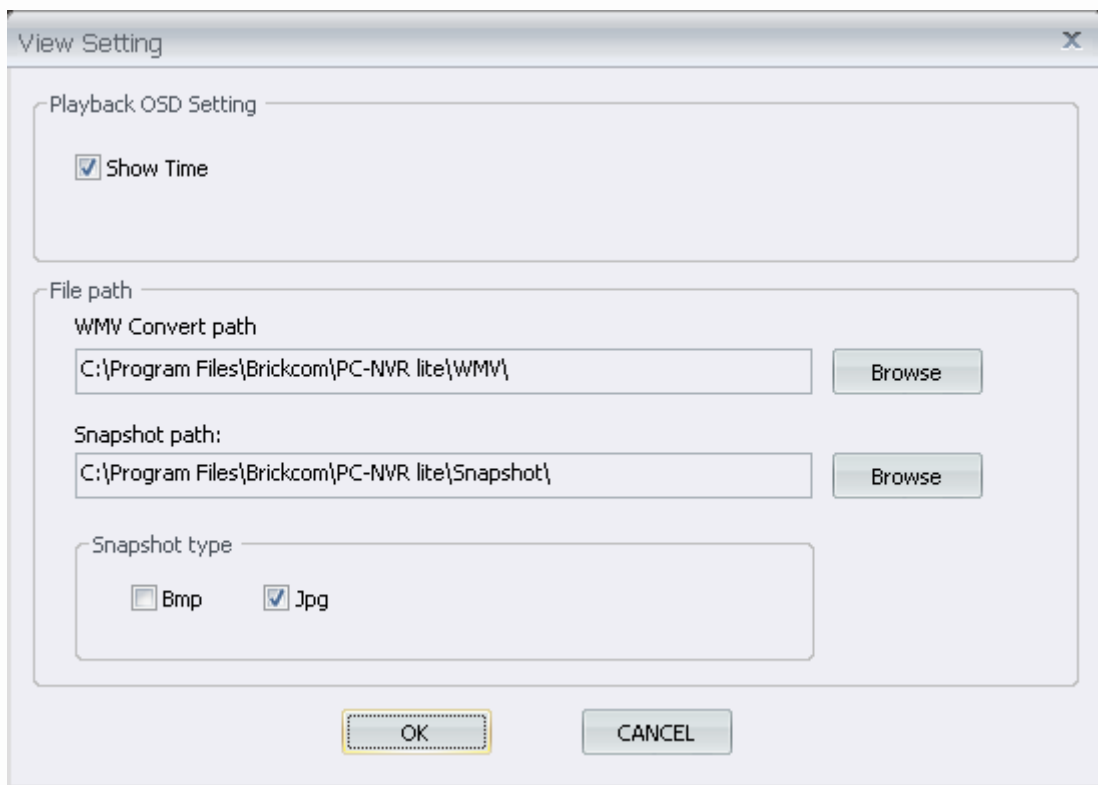
Click <Browse> to set desired destination folder as shown below.




View Setting

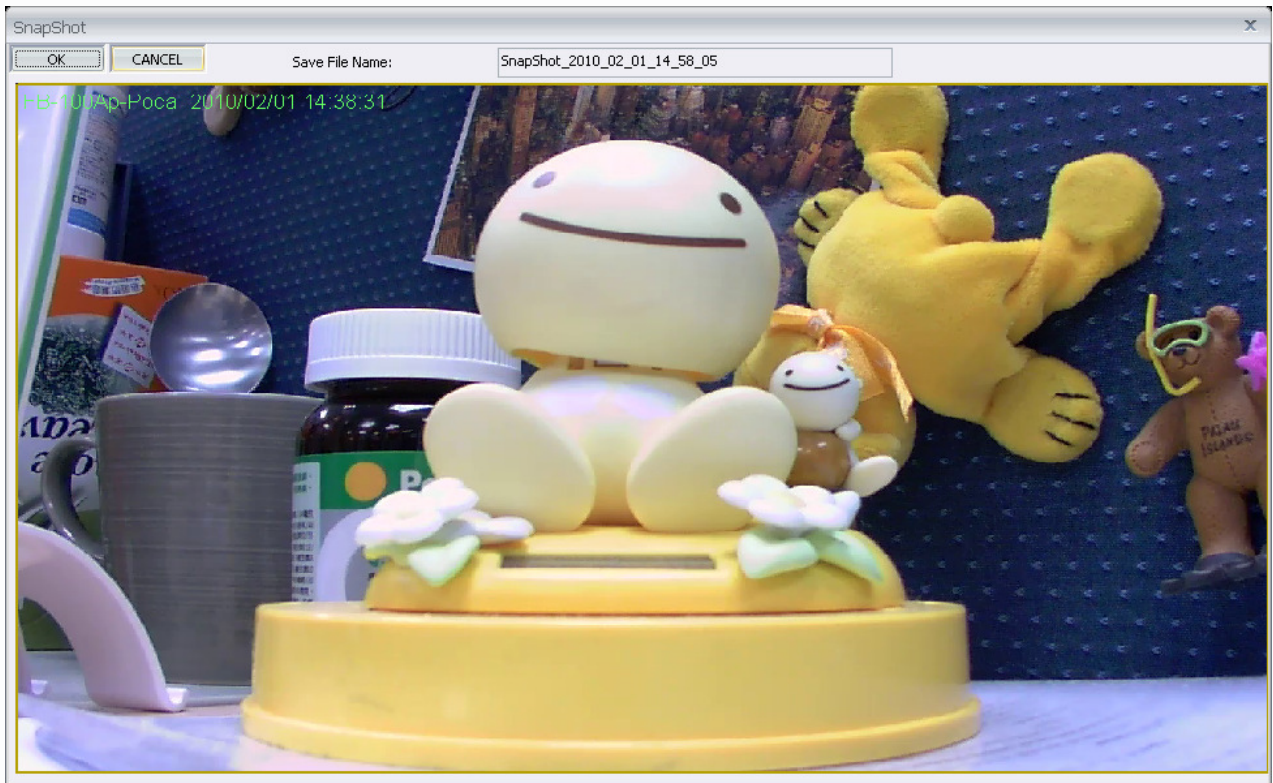
Click on the  <View Setting> to choose to show/hide the time on the playback video. Check <ShowTime>, and the time will be shown on the screen. Uncheck to hide the information.

File Path is to preset file paths for WMV conversion files and snapshot files. Click on <Browse> to select desired folders. In addition, file type of snapshot pictures can also be selected with Bmp and/or Jpg formats. After the settings are selected, click on <OK> to save.




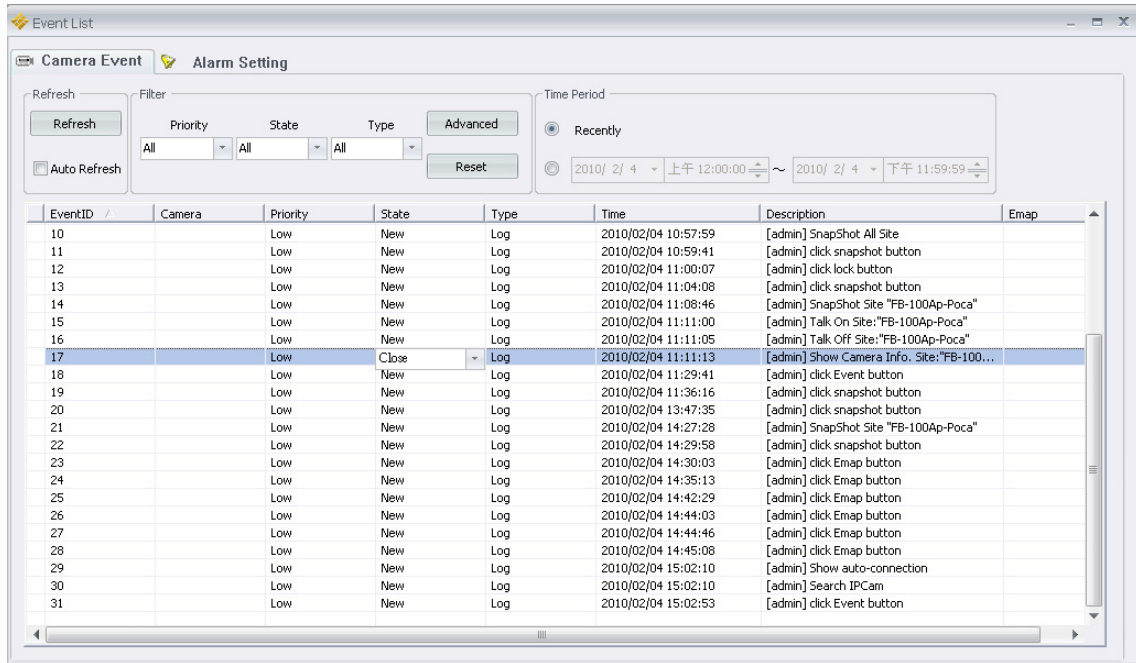
Snapshot

Click on the  <Snapshot> to capture a snapshot of the playback screen. When the snapshot window is opened, you can choose to rename the save filename or leave it as it is. Click on <OK> to save the snapshot or <CANCEL> to discard it.




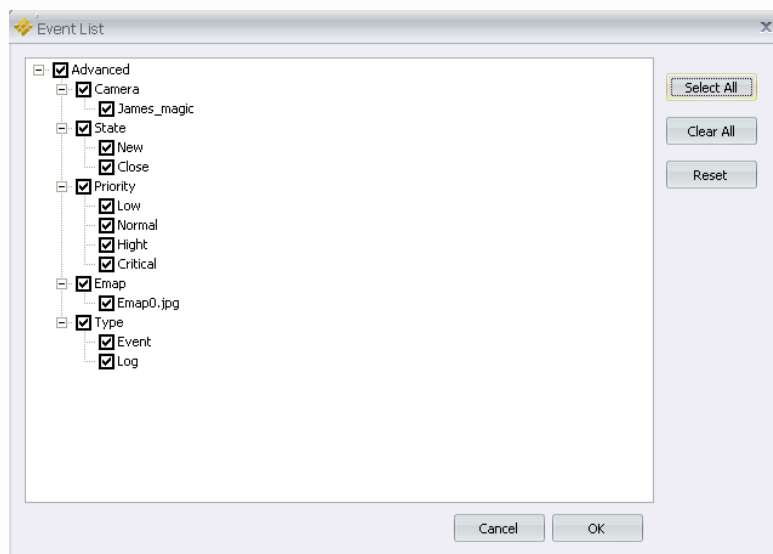
Event

Click on the  <Event> icon to list all log and event activities of the camera.

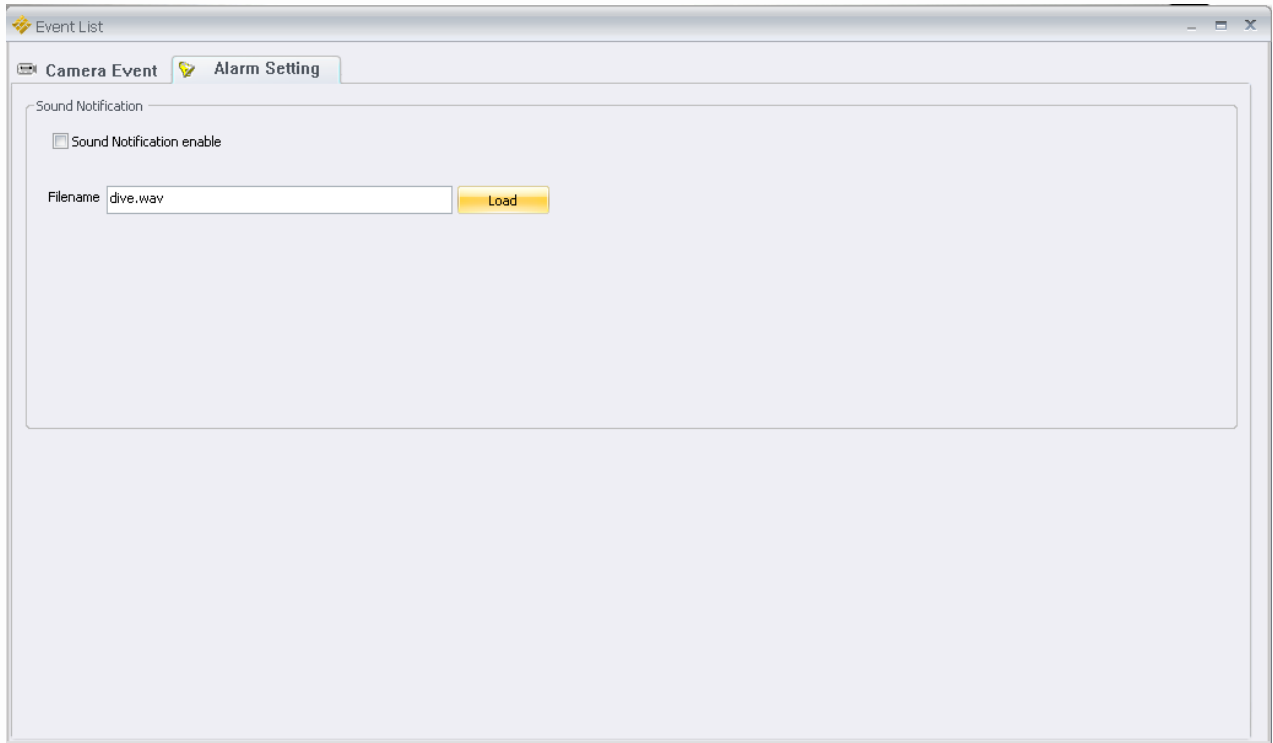


Camera Event

Click <Refresh> to reload the events. Select the time period to list the events happened in that specific time frame. When the mouse pointer moves over to <state> column, and  appears, click to change the status of the log. There are two ways to filter the events. One is to select <priority>, <state>, and <type> from the drop-down menu. The other way is to click <Advanced> and the figure below will be displayed. Check the filter options and clicks <OK> to finish the setting.




Alarm Setting

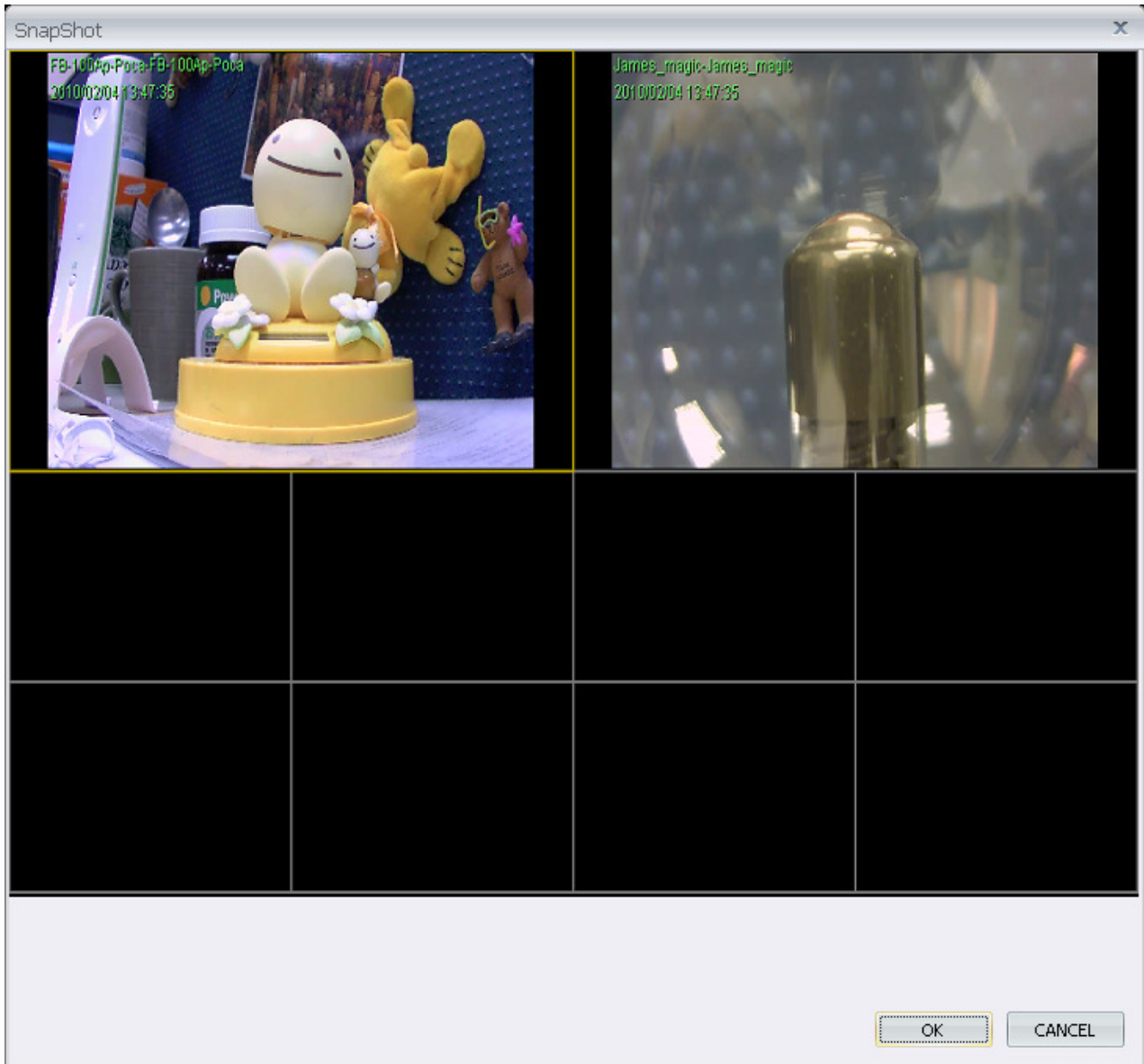


Click to enable the sound notification and click <Load> to select a sound file to be played when an alert event occurs.




Snapshot

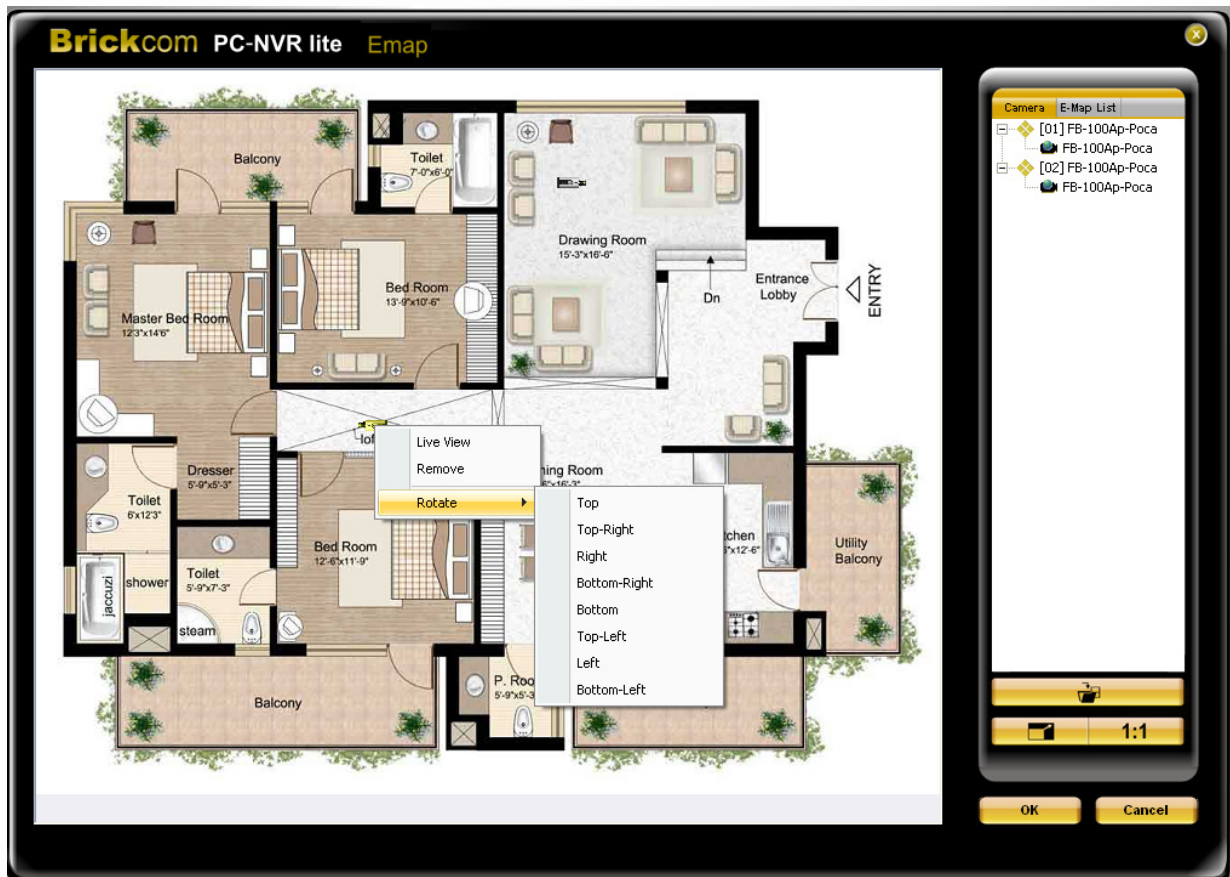
Click on the  <Snapshot> icon to capture the screenshot of the window that you are currently viewing.



The Snapshot function is a simple screen capture tool. You can save the screenshots to the default path <C:\Program Files\Brickcom\PC-NVR lite\Snapshot> or the folder that you have previously set in the file path. There are 2 ways to take the snapshot. One is to click on the <Snapshot> icon, and the snapshot window will be displayed. Click <OK> to save the file. The other way is to right click on the window, and select <Snapshot>. The file will be saved without displaying the image.

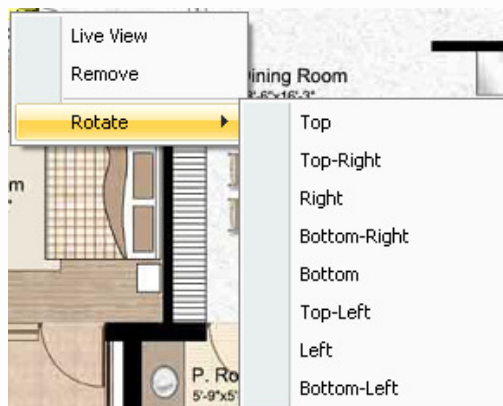
E-Map

Click on the  <E-map> icon to open the E-Map program. The E-Map is a program that allows the user to illustrate the positions of the cameras on a self selected image. The image shown in the window is the default picture. Click <Camera> on the control panel to list the site tree; click <E-Map> to list the map images.



The chosen image will be displayed in the E-MAP main window. Drag and drop a site from the site tree to any desired position of the image.

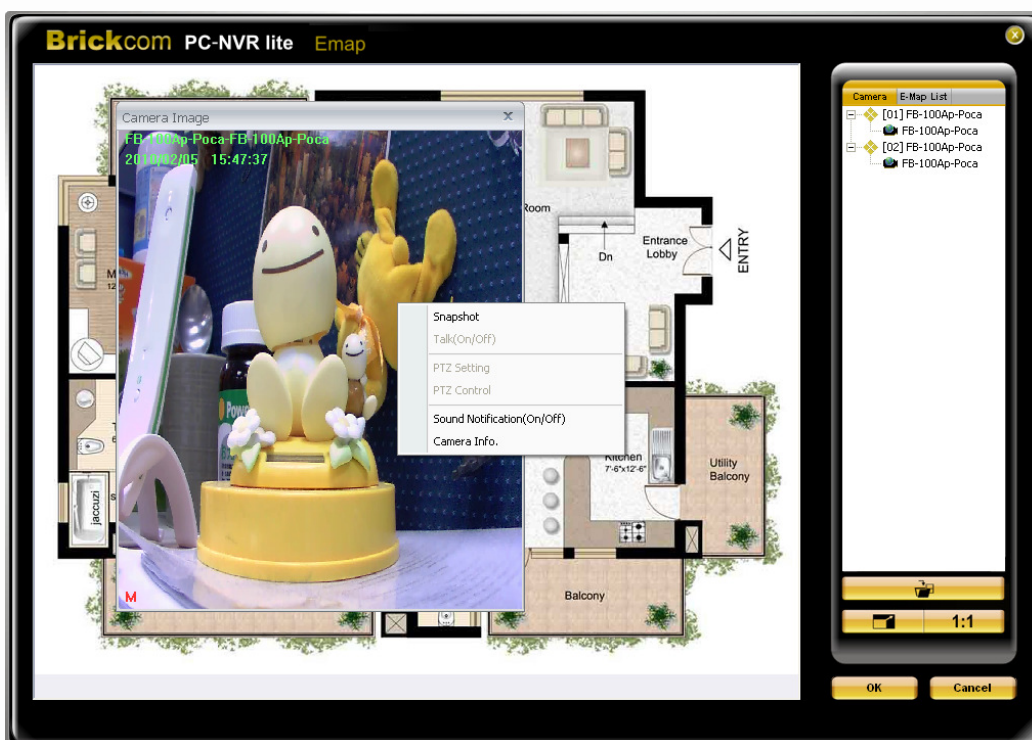
Right click on a camera icon can live view, remove it or rotate its pointing direction, including Top, Top-Right, Right, Bottom-Right, Bottom, Top-Left, Left, and Bottom-Left.



When the mouse pointer moves over a camera icon in the image, an information dialog box will be displayed as below.




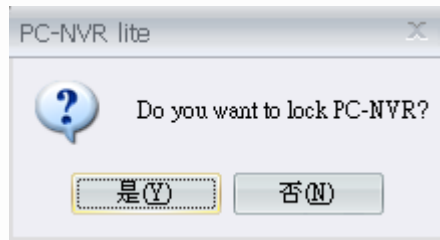
Double click on any camera icon in the image will display the live preview image of the camera. Right click on the camera preview window to display the camera control menu. The menu items includes: Snapshot, Sound Notification (On/Off), and Camera Info.




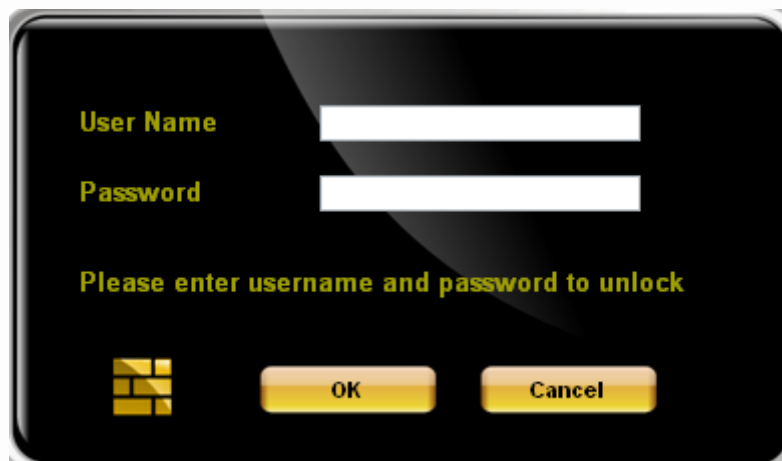
Lock

The Lock function is to protect the works on the PC-NVR when the user needs to be away from the computer for a while. This function is the same as the computer's screensaver.

Click on the  <Lock> icon and a confirmation message will be displayed as below. Click "Yes" to confirm.



To unlock, click on the  again, the window as shown below will be displayed for the user to enter username and password to unlock.



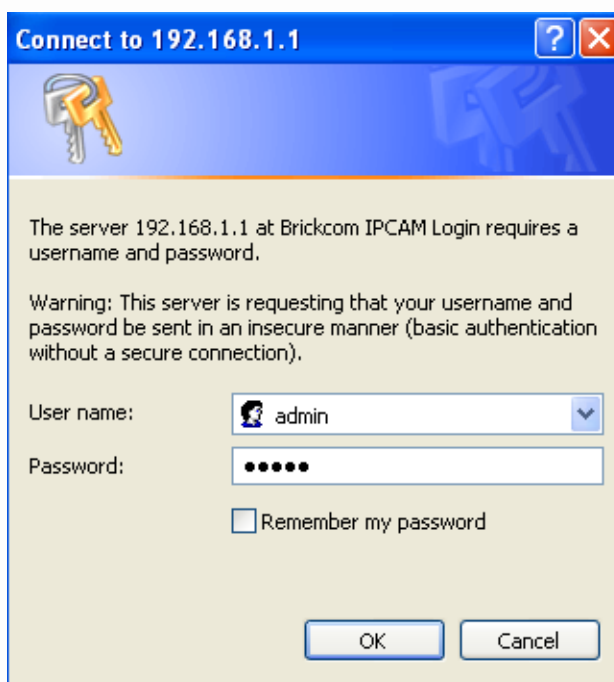
Live View

Access to the Network Camera


Authentication

After opening the Web browser and typing in the URL of the Network Camera, a dialogue window pops up to request a username and password. The user name and password for the Administrator are assigned as “**admin/admin**”. Upon successful authentication, the following figure is displayed.


The foreground is the login window and the background shows the message if authentication fails. The user may check the option box to save the password for future convenience. This option is not available to the Administrator for obvious reason.



Installing plug-in

For the initial access to the Network Camera in Windows, the web browser may prompt for permission to install a new plug-in for the Network Camera on the Internet Explorer. Permission request depends on the Internet security settings of the user's PC or notebook. If the highest security level is set, the computer may prohibit any installation and execution attempt. This plug-in has been registered for certificate and is used to display the video in the browser. Users may click on  to proceed. If the web browser does not allow the user to continue to install, check the Internet security option and lower the security levels or contact your IT or networking supervisor for help.



 **NOTE** – If error or fail occurred, it is because of the version of the Electronic Signature is newly released, VeriSign has not submitted to Microsoft Windows update for validation. Therefore, user default will not have its root certificate. If IE discovers that there is no root certificate after user's PC connected to IPCam, it will automatically redirect to VeriSign Web site to download and install the latest root certificate to make the installation successfully. If the user's computer is able to connect to IPCam, but unable to access to the internet, then it would not be able to download the latest root certificate, therefore the installation will fail. This problem can be resolved if computer can be connected to both internet and IPCam at the same time and will not recur when Windows update patches become available.

Live View is the default page that opens when accessing the Network Camera. Live video is displayed directly in the browser window.



If user would like to further configuration of the IP camera, please refer to the product user manual.

