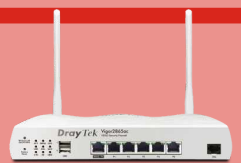


DrayTek

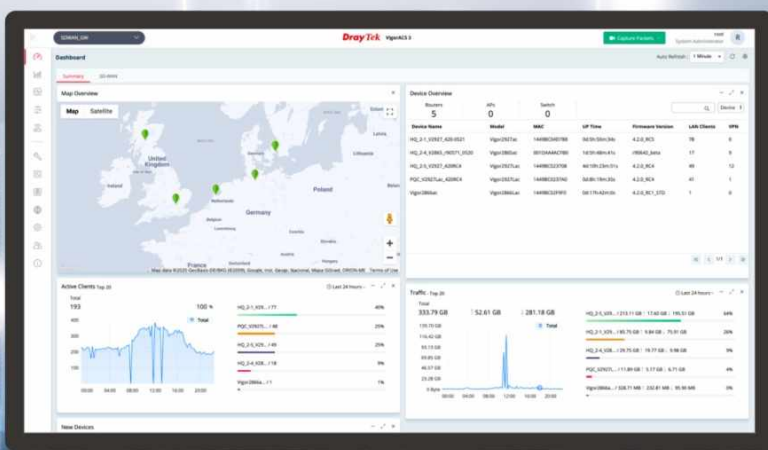
Vigorous Networking Solution for SMEs



DATABOOK 2022

DrayTek

Founded in 1997, DrayTek Corporation is a Taiwan-based manufacturer of networking equipment and management systems. From ISDN, VDSL to LTE, DrayTek has always been endeavouring to provide SMBs and professional with reliable, fast and secure connections. Our mission is to deliver high-quality and high-integrated networking services at an affordable price, and be your reliable networking solution partner.



Contents

Router

Broadband 3-6

xDSL 6-10

Wireless AP 11-14

Switch 15-18

Network Management 19-20

Accessories 21-22

Feature Matrix 23-32

Vigor2135 Series

Gigabit Broadband Router



Vigor2135ax

- Gigabit Ethernet WAN port
- 2 USB ports for 3G/4G backup or network storage
- 2 Simultaneous VPN Tunnels including 2 SSL VPN
- Bandwidth Management with intelligent VoIP QoS
- Central Management for VigorAP
- Support DrayDDNS

	WLAN	VoIP	Fiber
Vigor2135			
Vigor2135 ac/ax	●		
Vigor2135Vac	●	●	
Vigor2135FVac	●	●	●

Vigor2915 Series

Dual-WAN Security Router



- Dual-WAN for load-balancing or redundancy
- 1 USB port for 3G/4G WAN, printer, or network storage
- 16 concurrent VPN tunnels including up to 8 SSL VPN
- Bandwidth management & QoS for the best VoIP quality
- SPI Firewall with Content Filtering by Apps, URL keyword, and web category
- IPv6 Support
- Support DrayDDNS

	WLAN
Vigor2915	
Vigor2915 ac	●

Vigor2927 Series

Dual-WAN Security Router



- Dual-WAN for load-balancing or redundancy
- 2 x USB 2.0 or 1 x USB 2.0 (L model)
- SIM-base, 3G/4G LTE Router, CAT 6 up to 300Mbps connection speed (L model)
- 2 x FXS ports (V model)
- 50 simultaneous VPN tunnels, up to 25 SSL VPN
- SPI Firewall and Content Filtering
- Central Management for VigorAP & VigorSwitch
- Support DrayDDNS

Vigor2927FLVax



	WLAN	LTE	VoIP	Fiber
Vigor2927				
Vigor2927L		•		
Vigor2927ac/ax	•			
Vigor2927Lac/Lax	•	•		
Vigor2927Vac/Vax	•		•	
Vigor2927FLVac/FLVax	•	•	•	•

F model (Project base)

Vigor2962 Series

High Performance Dual-WAN Router



- 4 LAN/WAN configurable ports (1 x 2.5GbE & 1 x SFP/GbE combo & 2 x GbE) (up to 2 WANs in simultaneously)
- 2 Gigabit Ethernet LAN ports
- 1x USB 2.0 & 1x USB 3.0
- 200 simultaneous VPN tunnels including up to 50 SSL VPN
- Support High Availability (hardware redundancy)
- PoE+ capable ports available on Vigor2962P
- Central Management for VigorAP & VigorSwitch
- Support DrayDDNS

	PoE
Vigor2962	
Vigor2962P	●

Vigor1000B

High Performance 10G Router

- 6 x WAN/LAN switchable ports & 4 x fixed LAN ports
- 2 x 10G SFP+ for WAN or LAN
- Quad-Core Processor provides 9.4 Gbps NAT throughput
- 1000k NAT sessions Recommended for a network of 500+ hosts
- 2 Simultaneous VPN Tunnels including 2 SSL VPN
- Support DrayDDNS



Vigor3910

High Performance 10G Router

- 8 x WAN/LAN switchable ports & 4 x fixed LAN ports
- 2 x 10G SFP+ & 2 x 2.5G Ethernet for WAN or LAN
- Quad-Core Processor provides 9.4 Gbps NAT throughput
- 1000k NAT sessions Recommended for a network of 500+ hosts
- 500 simultaneous VPN tunnels throughput over 3.3 Gbps
- Supported and managed by VigorACS
- Support DrayDDNS



xDSL

Vigor165/167

Super Vectoring Modem



- Support VDSL2 35b Super Vectoring/ADSL2+
- Multi-PVC for triple-play applications

Vigor166

G.Fast Modem



- Support G.Fast/VDSL2 35b Super Vectoring/ADSL2+
- Multi-PVC for triple-play applications

Vigor2620 LTE Series

LTE Router



- Dual SIM for 3G/4G/LTE Cellular Connectivity with speed up to 150 Mbps
- VDSL2/ADSL2+ Modem Router
- Robust Firewall & Security for Internet activities
- 2 VPN connections for remote access and LAN-to-LAN
- Bandwidth Management with intelligent VoIP QoS
- Support DrayDDNS

	DSL	WLAN
Vigor2620L	●	
Vigor2620Ln	●	●

Vigor2763 Series

ADSL2/2+ & VDSL2 Router



- VDSL2/ADSL2+ Modem/Router
- Robust Firewall & Security for Internet activities
- 2 VPN connections for remote access and LAN-to-LAN
- Bandwidth Management with intelligent VoIP QoS
- Support DrayDDNS

	WLAN
Vigor2763	
Vigor2763ac	●

Vigor2765 Series

Super Vectoring Security Router



Vigor2765ax

- Support VDSL2 35b Super Vectoring/ADSL2+
- Robust Firewall & Security for Internet activities
- 2 VPN connections for remote access and LAN-to-LAN
- Bandwidth Management with intelligent VoIP QoS
- Support DrayDDNS

	WLAN	VoIP
Vigor2765		
Vigor2765 ac/ax	●	
Vigor2765 Vac	●	●

Vigor2766 Series

G.Fast Security Router



- Support G.Fast/VDSL2 35b Super Vectoring/ADSL2+
- Robust Firewall & Security for Internet activities
- 2 VPN connections for remote access and LAN-to-LAN
- Bandwidth Management with intelligent VoIP QoS
- Support DrayDDNS

	WLAN	VoIP
Vigor2766		
Vigor2766 ac	●	
Vigor2766 Vac	●	●

Vigor2865 Series

Super Vectoring Security Firewall



- Support VDSL2 35b Super Vectoring/ADSL2+
- 2 x USB 2.0 or 1 x USB 2.0 (L model)
- SIM-base, 3G/4G LTE Router, CAT 6 up to 300Mbps connection speed (L model)
- 2 x FXS ports (V model)
- 32 Simultaneous VPN Tunnels including 16 SSL VPN
- SPI Firewall with Content Filtering
- Central Management for VigorAP & VigorSwitch
- Support DrayDDNS

Vigor2865FLVax



	WLAN	LTE	VoIP	Fiber
Vigor2865				
Vigor2865L		•		
Vigor2865ac/ax	•			
Vigor2865Lac/Lax	•	•		
Vigor2865Vac/Vax	•		•	
Vigor2865FLVac/FLVax	•	•	•	•

F model (Project base)

Vigor2866 Series

G.Fast Security Firewall



- Support G.Fast /VDSL2 35b Super Vectoring/ADSL2+
- 2 x USB 2.0 or 1 x USB 2.0 (L model)
- SIM-base, 3G/4G LTE Router, CAT 6 up to 300Mbps connection speed (L model)
- 2 x FXS ports (V model)
- 32 Simultaneous VPN Tunnels including 16 SSL VPN
- SPI Firewall with Content Filtering
- Central Management for VigorAP & VigorSwitch
- Support DrayDDNS

Vigor2866FLVax



	WLAN	LTE	VoIP	Fiber
Vigor2866				
Vigor2866L		•		
Vigor2866ac/ax	•			
Vigor2866Lac/Lax	•	•		
Vigor2866Vac/Vax	•		•	
Vigor2866FLVac/FLVax	•	•	•	•

F model (Project base)

VigorAP 903

11ac Dual-Band Wireless Mesh AP



- Concurrent dual band
- Support 2x2 11ac WAVE2
- Data rate up to 867Mbps in 5GHz and up to 400Mbps in 2.4GHz
- 5 GbE port (including 1 PoE) + 1 USB Port
- Plug-n-Play Meshing
- Airtime Fairness
- Band Steering
- AP-Assisted Roaming
- Built-in RADIUS server for 802.1x authentication
- Compliant with Central AP Management of Vigor Router and VigorACS

VigorAP 906

802.11ax Dual-Band AP



- Concurrent Dual-band 802.11ax with 2x2 MIMO
- AX3000 dual-band wireless interface
- 5 GbE port (including 1 PoE)
- Plug-n-Play Meshing
- AirTime Fairness and Band Steering
- AP-Assisted Roaming
- Built-in RADIUS server for 802.1x authentication
- Compliant with Vigor central AP management and VigorACS

VigorAP 912C

802.11ac Ceiling-mount AP



- Concurrent Dual-band 802.11ac with 2x2 MIMO
- Delivers data rate of up to 867 Mbps in the 5GHz band and 300 Mbps in the 2.4GHz band
- Plug-n-Play Meshing
- 1 x PoE-capable Gigabit Ethernet port
- AirTime Fairness and Band Steering
- AP-Assisted Roaming
- Built-in RADIUS server for 802.1x authentication
- Compliant with Vigor central AP management and VigorACS

VigorAP 960C

802.11ax Ceiling-mount AP



- Concurrent Dual-band 802.11ax with 2x2 MIMO
- AX1800 dual-band wireless interface
- Plug-n-Play Meshing
- 1 x PoE-capable Gigabit Ethernet port
- AirTime Fairness and Band Steering
- AP-Assisted Roaming
- Built-in RADIUS server for 802.1x authentication
- Compliant with Vigor central AP management and VigorACS

VigorAP 1000C

Tri-band 802.11ac Ceiling-mount AP



- Support 2.4GHz and dual 5GHz radios, delivering speed up to 2.2.Gbps
- 2 GbE port (including 1 PoE)
- Airtime Fairness
- Band Steering
- AP-Assisted Roaming
- Built-in RADIUS server for 802.1x authentication
- Compliant with Central AP Management of Vigor Router and VigorACS

VigorAP 1060C

802.11ax Ceiling-mount AP



- Support 4x4:4 for both 2.4GHz and 5GHz, providing up to 3.6Gbps
- 1 x PoE-capable 2.5GbE port
- Utilize Transmission Opportunity with OFDMA
- Airtime Fairness
- Band Steering
- AP-Assisted Roaming
- Built-in RADIUS server for 802.1x authentication
- Compliant with Central AP Management of Vigor Router and VigorACS

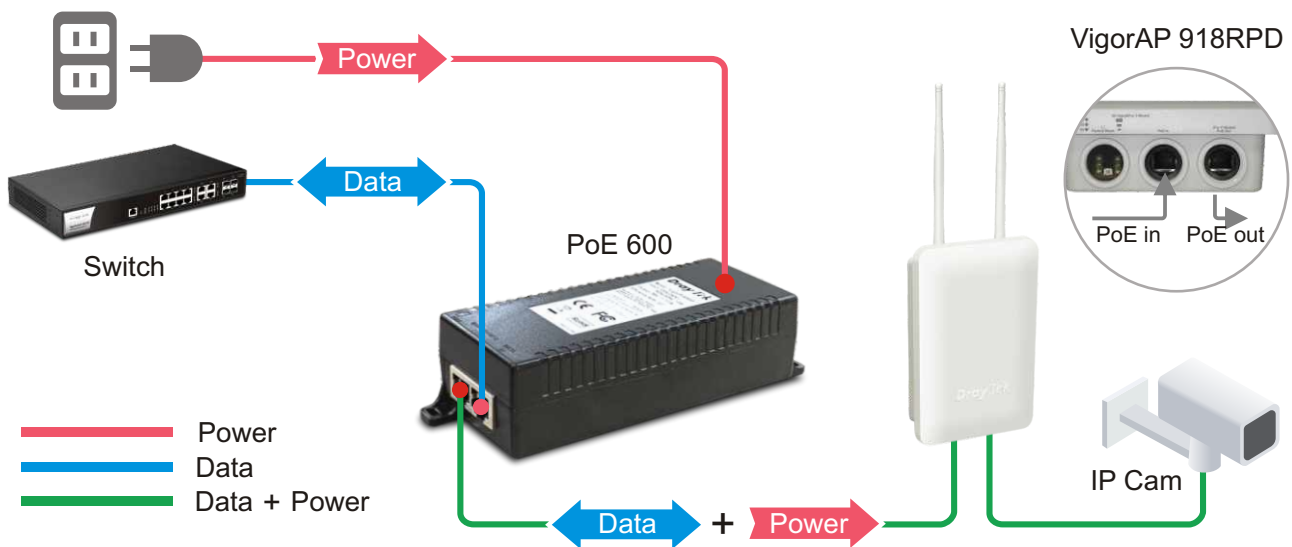
VigorAP 918R Series

11ac Dual-Band Outdoor AP



- IP 67-rated enclosure for outdoor usage, water-proof and dust-resistance
- 2.4/5GHz Dual band WiFi with 2x2 MIMO
- Secure VLAN/SSID grouping, up to 128 WLAN clients manageable per Radio
- IEEE 802.3az/Energy Efficient Ethernet PoE port
- Compatible with AP Management for centralized management
- High RF power for long-distance and expansive coverage
- Built-in 5GHz Direction Antenna selectable (918RPD)

	PoE Out	Directional Antenna
VigorAP 918R		
VigorAP 918RPD	•	•



VigorSwitch G1080

Smart Lite Gigabit Switch

- Simple and Easy to use network switch
- 8 x Gigabit capable ports
- Support HTTP Web Management
- QoS for application traffic prioritization
- Support 8 VLANs & 1 Trunking Group
- Power saving by 802.3az Energy Efficient Ethernet
- Support Loop Detection & Prevention



Web Smart

VigorSwitch G1282/P1282

Web Smart Gigabit Switch

- 24 x Gigabit capable ports & 4 combo Gigabit SFP/RJ-45 ports
- 24 x Gigabit PoE+ capable ports with PoE power budget up to 400 watts (P1282)
- Auto Voice VLAN for easy VoIP deployment and best call quality
- QoS with 8 priority queues and rate limiting
- Dual-stack IPv4/IPv6 support
- Compliant with Switch Management of Vigor Router



VigorSwitch G2100/P2100

L2+ Managed Switch

- 8 x Gigabit capable ports & 2 x GbE SFP ports
- 8 x Gigabit PoE+ capable ports with PoE power budget up to 140 watts (P2100)
- VLAN configuration based on 802.1q tag, MAC address, and protocol
- Auto Voice VLAN and Auto Surveillance VLAN to optimize call and video quality
- Secure Local Network by 802.1x Port Security, ACL, IP Source Guard and DHCP Snooping
- Support IPv6 with MLD Snooping, IPv6 ACL, and IPv6 DNS Resolver
- Authentication by local database, multiple RADIUS, and TACACS+ servers
- Support SNMP v1/v2c/v3, RMON, and Syslog for network monitoring
- Compliant with Switch Management of Vigor Router and VigorACS
- Static Route
- DHCP Server



VigorSwitch FX2120

L2+ Managed Switch

- 12 x 10G SFP+ ports
- VLAN configuration based on 802.1q tag, MAC address, and protocol
- Auto Voice VLAN and Auto Surveillance VLAN to optimize call and video quality
- Secure Local Network by 802.1x Port Security, ACL, IP Source Guard and DHCP Snooping
- Support IPv6 with MLD Snooping, IPv6 ACL, and IPv6 DNS Resolver
- Authentication by local database, multiple RADIUS, and TACACS+ servers
- Support SNMP v1/v2c/v3, RMON, and Syslog for network monitoring
- Compliant with Switch Management of Vigor Router and VigorACS
- Static Route
- DHCP Server
- SDN Function



VigorSwitch Q2121x/PQ2121xb

L2+ Managed 2.5GbE Switch

- 8 x 2.5Gigabit capable ports & 4 x 10G SFP+ ports
- 4 x PoE++ & 4 x PoE+ 2.5Gigabit capable ports with PoE power budget up to 240 watts (PQ2121xb)
- VLAN configuration based on 802.1q tag, MAC address, and protocol
- Auto Voice VLAN and Auto Surveillance VLAN to optimize call and video quality
- Secure Local Network by 802.1x Port Security, ACL, IP Source Guard and DHCP Snooping
- Support IPv6 with MLD Snooping, IPv6 ACL, and IPv6 DNS Resolver
- Authentication by local database, multiple RADIUS, and TACACS+ servers
- Support SNMP v1/v2c/v3, RMON, and Syslog for network monitoring
- Compliant with Switch Management of Vigor Router and VigorACS
- Static Route
- DHCP Server



VigorSwitch Q2200x/PQ2200xb

L2+ Managed 2.5GbE Switch

- 16 x 2.5Gigabit capable ports & 4 x 10G SFP+ ports
- 4 x PoE++ & 12 x PoE+ 2.5Gigabit capable ports with PoE power budget up to 400 watts (PQ2200xb)
- VLAN configuration based on 802.1q tag, MAC address, and protocol
- Auto Voice VLAN and Auto Surveillance VLAN to optimize call and video quality
- Secure Local Network by 802.1x Port Security, ACL, IP Source Guard and DHCP Snooping
- Support IPv6 with MLD Snooping, IPv6 ACL, and IPv6 DNS Resolver
- Authentication by local database, multiple RADIUS, and TACACS+ servers
- Support SNMP v1/v2c/v3, RMON, and Syslog for network monitoring
- Compliant with Switch Management of Vigor Router and VigorACS
- Static Route
- DHCP Server



VigorSwitch G2280x/P2280x

L2+ Managed Switch

- 24 x Gigabit capable ports & 4 x 10G SFP+ ports
- 24 x Gigabit PoE+ capable ports with PoE power budget up to 400 watts (P2280x)
- VLAN configuration based on 802.1q tag, MAC address, and protocol
- Auto Voice VLAN and Auto Surveillance VLAN to optimize call and video quality
- Secure Local Network by 802.1x Port Security, ACL, IP Source Guard and DHCP Snooping
- Support IPv6 with MLD Snooping, IPv6 ACL, and IPv6 DNS Resolver
- Authentication by local database, multiple RADIUS, and TACACS+ servers
- Support SNMP v1/v2c/v3, RMON, and Syslog for network monitoring
- Compliant with Switch Management of Vigor Router and VigorACS
- Static Route
- DHCP Server



VigorSwitch G2540xs/P2540xs

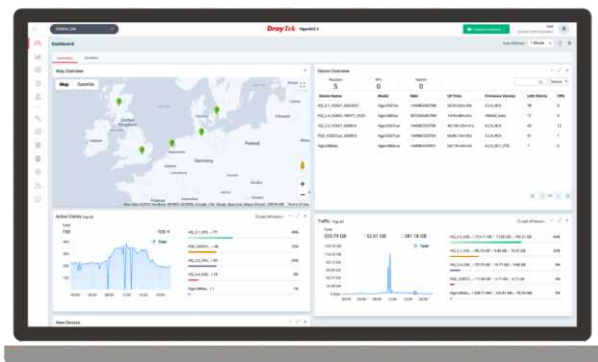
L2+ Managed Switch

- 48 x Gigabit capable ports & 6 x 10G SFP+ ports
- 48 x Gigabit PoE+ capable ports with PoE power budget up to 400 watts (P2540xs)
- VLAN configuration based on 802.1q tag, MAC address, and protocol
- Auto Voice VLAN and Auto Surveillance VLAN to optimize call and video quality
- Secure Local Network by 802.1x Port Security, ACL, IP Source Guard and DHCP Snooping
- Authentication by local database, multiple RADIUS, and TACACS+ servers
- Support SNMP v1/v2c/v3, RMON, and Syslog for network monitoring
- Compliant with Switch Management of Vigor Router and VigorACS
- Support IPv6 with MLD Snooping, IPv6 ACL, and IPv6 DNS Resolver
- Static Route
- DHCP Server
- SDN Function



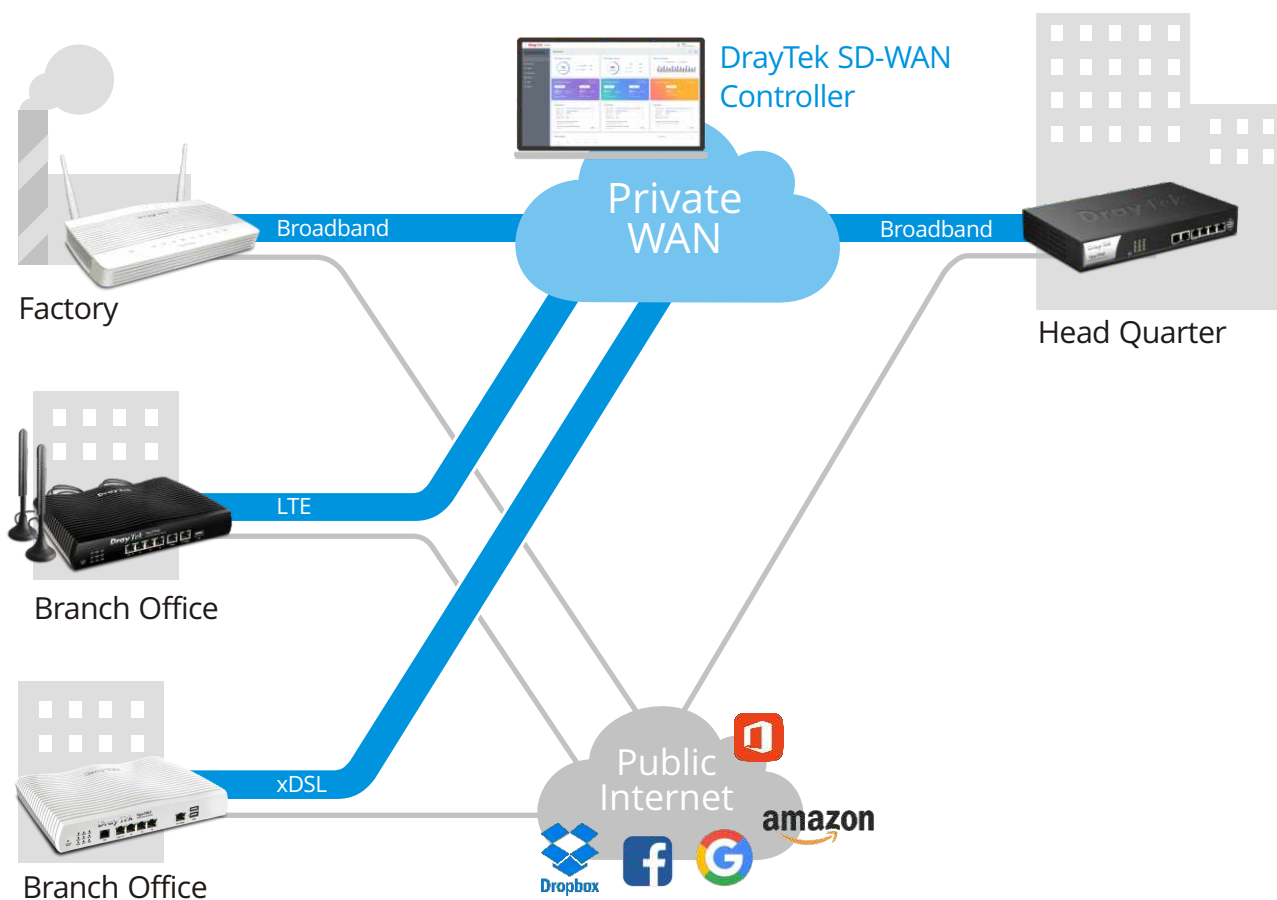
VigorACS 3

NMS for Vigor Devices and SD-WAN Orchestrator



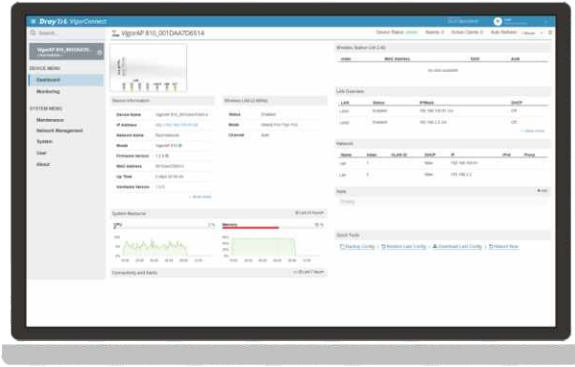
- Zero Touch Deployment and Provisioning
- Auto-VPN for Hub-and-Spoke or Mesh Topology
- Interface Quality and SLA
- VoIP Optimization and Monitoring
- Application Visibility
- Application-Based SD-WAN Policy
- Customized Hotspot Page with Multilingual
- Hotspot Clients Analytics
- ACS Server Load Balancing / Failover

SD-WAN Solution

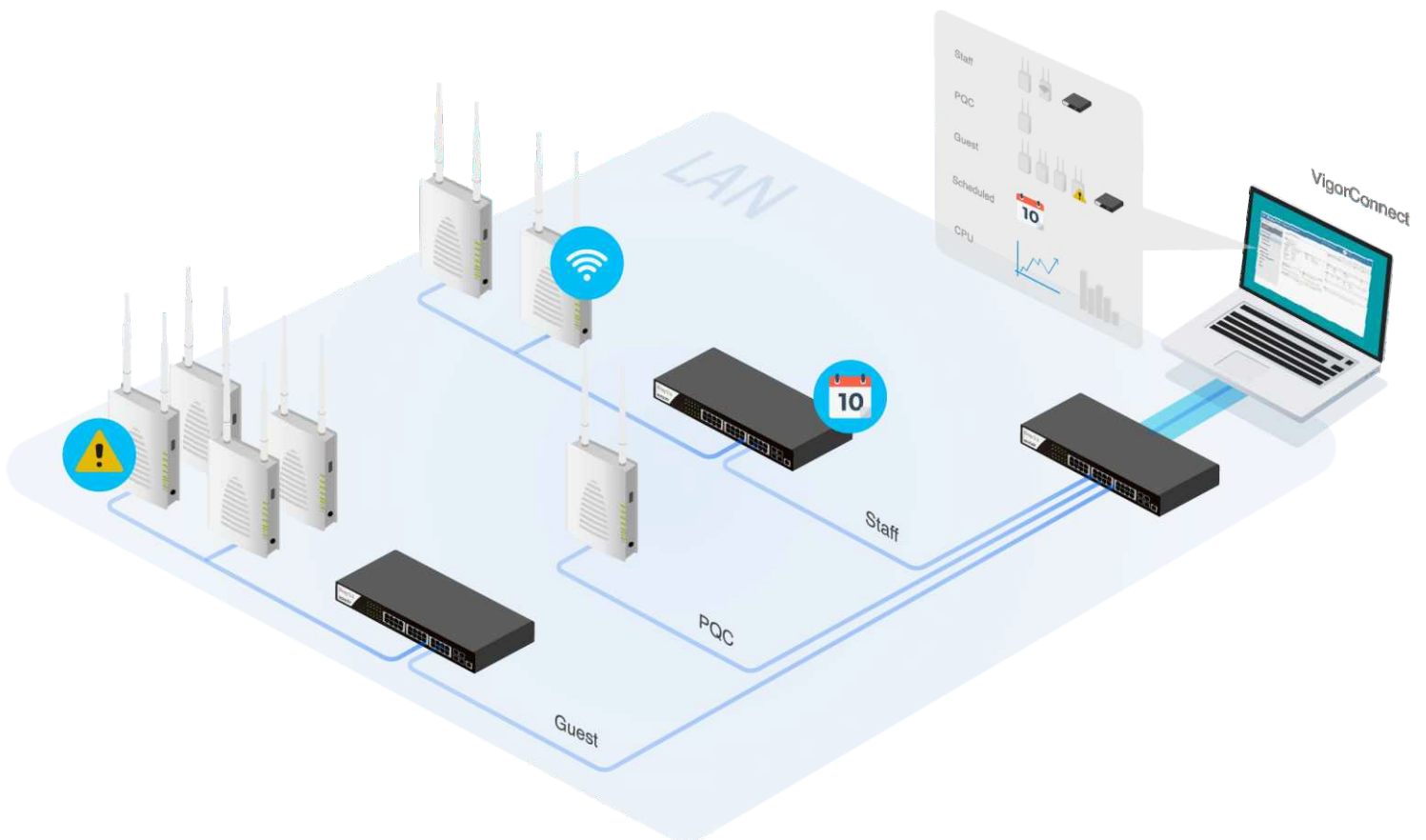


VigorConnect

Local Network Management Software for DrayTek Devices



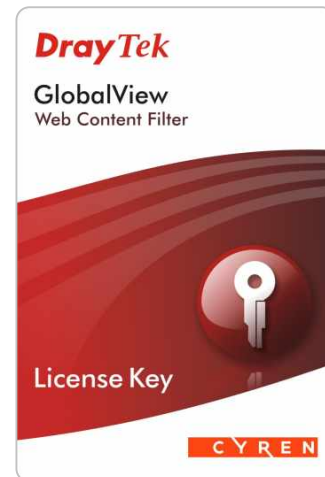
- Automatically discover all VigorAPs/VigorSwitches on your LAN and manage up to 100 devices
- Provision AP profile to APs in a network to set up several VigorAPs; setup the VLAN or PoE for selected Switches
- Get notified when an AP/Switch lost connection with the VigorConnect Server
- Network insights about AP, client, and CPU usage, etc. over a specified period
- Schedule an off-hour firmware upgrade or configure backup/restore



WCF License

Real-Time Dynamic Web Content Classification Service

- Zero-Hour Security for identifying outbreaks on their way to users, instead of reacting to their pain.
- Innovative Data Cloud Technology for overcoming local storage limitations and satisfying customers' specific needs.



DAC-CX10

10G SFP+ Cable

- Support for multi-gigabit data rates up to 10Gb/s
- Data rates backward compatible to 1Gb/s
- Hot Pluggable SFP+



DrayTek Rack-mount Plate

The metal rack-mount plate is designed for sustaining the device of Vigor2865/Vigor2927 series inside the 19-inch cabinet.



USB Thermometer

Temperature Sensor for DrayTek routers

- Direct router/AP connection
- Outer sensor included (1M)
- Data is displayed in °F or °C
- Informative Web Interface
- Alarm Max/Min Thresholds
- Continuous Reporting to syslog
- Email & SMS Reporting on threshold breach
- RoHS Compliant



Antenna Series



	ANT-1205	ANT-2520
Description	2.4GHz/5GHz Indoor Omni-Directional Antenna	2.4GHz/5GHz Indoor Directional Patch Antenna
Environment	Indoor	Indoor
Frequency Range	2400~2500 MHz 5150~5850 MHz	2400~2500 MHz 5150~5875 MHz
Peak Gain @ 2.4GHz	5 dBi	7.5 dBi
@ 5GHz	4.5 dBi	10 dBi
VSWR @ 2.4GHz	< 2.0	≤ 2.0
@ 5GHz	< 2.0	
Polarization	Linear	Vertical, Linear
HPBW/Horizontal @ 2.4GHz		70°
@ 5GHz		60°
HPBW/Vertical @ 2.4GHz		60°
@ 5GHz		30°
Power Handling	1W	2W
Impedance	50 Ω	50 Ω
Connector	RP SMA Plug	RP SMA Plug

Broadband Router

		Vigor2135 series					Vigor2915 series	
		2135	2135ac	2135ax	2135Vac	2135FVac	2915	2915ac
WAN	Fixed WAN	1 x GbE			1 x SFP	1 x GbE		
	Switchable WAN/LAN						1 x GbE	
LAN	Fixed LAN	4 x GbE				3 x GbE		
	LAN Subnet	4				4		
	DMZ Port							
USB Port		2				1		
WLAN	Standard		11a/b/g/n/ ac wave 2	11a/b/g/n/ ac wave 2/ax	11a/b/g/n/ac Wave 2		11a/b/g/n/ ac wave 2	
	2.4GHz			•			•	
	5GHz			•			•	
	Mesh			•				
VPN	Max. VPN	2				16		
	Max. SSL VPN	2				8		
	VPN Matcher	•				•		
Routing	Static Route	•				•		
	Policy Route	•				•		
	RIP	•				•		
	BGP							
	OSPF							
Content Filter	APP	•				•		
	Web Category	•				•		
	DNS Keyword	•				•		
	URL Keyword	•				•		
NAT Sessions		50K				30K		
VoIP					•			
VPN Management								
AP Management		2						
Switch Management								

Vigor2927 series					Vigor2962 series	Vigor1000B	Vigor3910
2927	2927ac	2927ax	2927Vac	2927Lac	2962/P	1000B	3910
1 x GbE				1 x GbE + 1 x LTE			
1 x GbE					1 x 2.5GbE + 2 x GbE + 1 x GbE/SFP Combo	4 x GbE + 2 x SFP+	2 x 2.5GbE + 4 x GbE + 2 x SFP+
5 x GbE					2 x GbE	4 x GbE	4 x GbE
8					20	100	100
1							
2				1	2	2	2
	11a/b/g/n/ ac wave 2	11a/b/g/n/ ac wave 2/ax	11a/b/g/n/ ac wave 2				
	•						
	•						
	•						
50					200	2	500
25					50	2	200
•					•	•	•
•					•	•	•
•					•	•	•
•					•	•	•
•					•	•	•
•					•	•	•
•					•	•	•
•					•	•	•
•					•	•	•
•					•	•	•
•					•	•	•
60K					300K	1000K	1000K
		•					
8							
20					50	50	50
10					30	30	30

xDSL Router

		Vigor160 series			Vigor2620 LTE series	
		165	166	167	2620L	2620Ln
WAN	Fixed WAN Port	1 x A/VDSL /35b	1 x A/VDSL /35b/G.Fast	1 x A/VDSL /35b	1 x A/VDSL + 2 x LTE	
	WAN/LAN Switchable Port				1 x GbE	
LAN	Fixed LAN Port	2 x GbE			1 x GbE	
	LAN Subnet	1			2	
	DMZ Port					
USB Port						
WLAN	Standard					11b/g/n
	2.4GHz					•
	5GHz					
	Mesh					
VPN	Max. VPN				2	
	Max. SSL VPN				2	
	VPN Matcher				•	
Routing	Static Route	•			•	
	Policy Route				•	
	RIP	•			•	
	BGP				•	
	OSPF					
Content Filter	APP				•	
	Web Category				•	
	DNS Keyword				•	
	URL Keyword	•			•	
NAT Sessions		10K			30K	
VoIP						
VPN Management						
AP Management					2	
Switch Management						

Vigor2763 series		Vigor2765 series			
2763	2763ac	2765	2765ac	2765ax	2765Vac
1 x AVDSL		1 x AVDSL/35b			
1 x GbE		1 x GbE			
3 x GbE		3 x GbE			
4		4			
2		2			
	11a/b/g/n/ ac wave 2		11a/b/g/n/ ac wave 2	11a/b/g/n/ ac wave 2/ax	11a/b/g/n/ ac wave 2
	•			•	
	•			•	
	•			•	
2		2			
2		2			
	•			•	
	•			•	
	•			•	
	•			•	
	•			•	
	•			•	
	•			•	
	•			•	
50K		50K			
					•
2		2			

xDSL Router

		Vigor2766 series			Vigor2865 series	
		2766	2766ac	2766Vac	2865	2865ac
WAN	Fixed WAN Port	1 x A/VDSL/35b/G.Fast			1 x A/VDSL/35b	
	WAN/LAN Switchable Port	1 x GbE			1 x GbE	
LAN	Fixed LAN Port	3 x GbE			5 x GbE	
	LAN Subnet	4			8	
	DMZ Port				1	
USB Port		2			2	
WLAN	Standard		11a/b/g/n/ ac wave 2			11a/b/g/n/ ac wave 2
	2.4GHz		•			•
	5GHz		•			•
	Mesh		•			•
VPN	Max. VPN	2			32	
	Max. SSL VPN	2			16	
	VPN Matcher	•			•	
Routing	Static Route	•			•	
	Policy Route	•			•	
	RIP	•			•	
	BGP				•	
	OSPF					
Content Filter	APP	•			•	
	Web Category	•			•	
	DNS Keyword	•			•	
	URL Keyword	•			•	
NAT Sessions		50K			60K	
VoIP					•	
VPN Management					8	
AP Management		2			20	
Switch Management					10	

Vigor2865 series			Vigor2866 series				
2865ax	2865Vac	2865Lac	2866	2866ac	2866ax	2866Vac	2866Lac
1 x AVDSL/35b		1 x AVDSL/35b + 1 x LTE	1 x AVDSL/35b/G.Fast				1 x AVDSL/35b/ G.Fast + 1 x LTE
1 x GbE			1 x GbE				
5 x GbE			5 x GbE				
8			8				
1			1				
2		1	2				1
11a/b/g/n/ ac wave 2/ax	11a/b/g/n/ ac wave 2		11a/b/g/n/ ac wave 2	11a/b/g/n/ ac wave 2/ax	11a/b/g/n/ ac wave 2		
	•				•		
	•				•		
	•				•		
32			32				
16			16				
	•				•		
	•				•		
	•				•		
	•				•		
	•				•		
	•				•		
	•				•		
60K			60K				
	•				•		
8			8				
20			20				
10			10				

Access Point

		VigorAP 903	VigorAP 906	VigorAP 912C	VigorAP 960C	VigorAP 1000C
		903	906	912C	960C	1000C
Band	2.4GHz	•	•	•	•	•
	5GHz	•	•	•	•	Dual
Max. Link Rate (Mbps)		400 + 867	574+2400	300 + 867	600+1200	400+867+867
Max. Clients (per band)		128 (64)	256 (128)	256 (128)	256 (128)	384 (128)
Environment		Indoor	Indoor	Indoor	Indoor	Indoor
LAN Switch		5 x GbE	5 x GbE	1 x GbE	1 x GbE	2 x GbE
USB Port		1				1
Power Input		DC / PoE	DC / PoE	DC / PoE	DC / PoE	DC / PoE
PoE Out						
Antenna		2 x 2 External	2 x 2 External	2 x 2 Internal	2 x 2 Internal	2 x 2 Internal
Mounting (Desk/Wall/Ceiling/Pole)		D/W	D/W	C/W	C/W	C/W
Wi-Fi Standard		11a/b/g/n/ ac wave 2	11a/b/g/n/ ac wave 2/ax	11a/b/g/n/ ac wave 2	11a/b/g/n/ ac wave 2/ax	11a/b/g/n/ ac wave 2
AP-Assisted Roaming		•	•	•	•	•
AirTime Fairness		•	•	•	•	•
Band Steering		•	•	•	•	•
Max. Number of SSID (per band)		8 (4)	8 (4)	8 (4)	8 (4)	12 (4)
802.1q tag-based VLAN		•	•	•	•	•
Built-in RADIUS Server		•	•	•	•	•
Stand-alone Operation		•	•	•	•	•
Mesh		Root, Node	Root, Node	Root, Node	Root, Node	Root, Node
VigorRouter Mgmt. (APM)		•	•	•	•	•

VigorAP 1060C	VigorAP 918R series	
1060C	918R	918RPD
•	•	•
•	•	•
1200+2400	400 + 867	400 + 867
256 (128)	256 (128)	256 (128)
Indoor	Outdoor	Outdoor
1 x 2.5GbE	1 x GbE	2 x GbE
DC / PoE	PoE	PoE
		•
4 x 4 Internal	2 x 2 External	2 x 2 External + Internal
C/W	W/P	W/P
11a/b/g/n/ ac wave 2/ax	11a/b/g/n/ ac wave 2	11a/b/g/n/ ac wave 2
•	•	•
•	•	•
•	•	•
16 (8)	8 (4)	8 (4)
•	•	•
•	•	•
•	•	•
Root, Node	Root, Node	Root, Node
•	•	•

Switch

		Smart Lite	Web Smart		L2+ Managed		
		G1080	G1282	P1282	G2100	P2100	FX2120
Ports	RJ-45	8 x GbE	24 x GbE	24 x GbE	8 x GbE	8 x GbE	
	SFP				2	2	12 (SFP+)
	SFP/GbE Combo		4	4			
	Console				•	•	•
PoE	Ports			24		8	
	Power Budget			400		140	
LAN	Spanning Tree		STP, RSTP	STP, RSTP	STP, RSTP, MSTP	STP, RSTP, MSTP	STP, RSTP, MSTP
	LACP (Max. Group Number / Max. Number in each group)	1 / 2	8 / 8	8 / 8	4 / 8	4 / 8	8 / 8
	ONVIF Surveillance		•	•	•	•	•
VLAN	Tag-Based	•	•	•	•	•	•
	MAC-Based		•	•	•	•	•
	Voice & Surveillance VLAN		•	•	•	•	•
	GVRP				•	•	•
	QinQ (Basic)				•	•	•
Layer3 Features	Static Route				•	•	•
	VLAN Route				•	•	•
	DHCP Server				•	•	•
Security	IP Conflict Detection & Prevention		•	•	•	•	•
	IPSG		•	•	•	•	•
	ACL		•	•	•	•	•
	802.1X/ MAC Authentication				•	•	•
	DAI				•	•	•
	DHCP Snooping				•	•	•
Multicast	IGMP Snooping	v2	v2, v3(BISS)	v2, v3(BISS)	v2, v3(BISS)	v2, v3(BISS)	v2, v3(BISS)
	MLD Snooping				v1, v2	v1, v2	v1, v2
Management	sFlow						•
	SNMP		v1/v2c/v3	v1/v2c/v3	v1/v2c/v3	v1/v2c/v3	v1/v2c/v3
	LLDP		•	•	•	•	•
	SWM	•	•	•	•	•	•

L2+ Managed							
Q2121x	PQ2121xb	Q2200x	PQ2200xb	G2280x	P2280x	G2540xs	P2540xs
8 x 2.5GbE	8 x 2.5GbE	16 x 2.5GbE	16 x 2.5GbE	24 x GbE	24 x GbE	48 x GbE	48 x GbE
4 (SFP+)	4 (SFP+)	4 (SFP+)	4 (SFP+)	4 (SFP+)	4 (SFP+)	6 (SFP+)	6 (SFP+)
•	•	•	•	•	•	•	•
	4 PoE++ & 4 PoE+		4 PoE++ & 12 PoE+		24		48
	240		400		400		400
STP, RSTP, MSTP	STP, RSTP, MSTP	STP, RSTP, MSTP	STP, RSTP, MSTP	STP, RSTP, MSTP	STP, RSTP, MSTP	STP, RSTP, MSTP	STP, RSTP, MSTP
8 / 8	8 / 8	8 / 8	8 / 8	8 / 8	8 / 8	8 / 8	8 / 8
•	•	•	•	•	•	•	•
•	•	•	•	•	•	•	•
•	•	•	•	•	•	•	•
•	•	•	•	•	•	•	•
•	•	•	•	•	•	•	•
•	•	•	•	•	•	•	•
•	•	•	•	•	•	•	•
•	•	•	•	•	•	•	•
•	•	•	•	•	•	•	•
•	•	•	•	•	•	•	•
•	•	•	•	•	•	•	•
•	•	•	•	•	•	•	•
•	•	•	•	•	•	•	•
•	•	•	•	•	•	•	•
•	•	•	•	•	•	•	•
•	•	•	•	•	•	•	•
•	•	•	•	•	•	•	•
•	•	•	•	•	•	•	•
•	•	•	•	•	•	•	•
•	•	•	•	•	•	•	•
•	•	•	•	•	•	•	•
•	•	•	•	•	•	•	•
v2, v3(BISS)	v2, v3(BISS)	v2, v3(BISS)	v2, v3(BISS)	v2, v3(BISS)	v2, v3(BISS)	v2, v3(BISS)	v2, v3(BISS)
v1, v2	v1, v2	v1, v2	v1, v2	v1, v2	v1, v2	v1, v2	v1, v2
•	•	•	•	•	•	•	•
v1/v2c/v3	v1/v2c/v3	v1/v2c/v3	v1/v2c/v3	v1/v2c/v3	v1/v2c/v3	v1/v2c/v3	v1/v2c/v3
•	•	•	•	•	•	•	•
•	•	•	•	•	•	•	•

DrayTek

www.draytek.com

Tel: +886-3-5972727 Fax: +886-3-5972121 E-mail: info@draytek.com

Trademarks and brand names are the properties of their respective owners.
The scope of delivery and other details are subject to change without prior notice.

Copyrights © DrayTek Corp. All right reserved.