

# DrayTek

*Vigorous Networking Solution for SMEs*



*DATABOOK 2023*

# DrayTek

DrayTek is a manufacturer of broadband CPE (Customer Premises Equipment), including firewalls, VPN devices, load-balancing routers, wireless access points, and switches. Our goal is to provide reliable and high-integrated networking solutions at an affordable price, become the reliable networking partner of small and medium-sized businesses.



# Contents

## Router

---

Broadband 3-6

xDSL 6-10

---

Wireless AP 11-14

Switch 15-18

Software / Tools 19-20

Accessories 21-22

Feature Matrix 23-32

## Vigor2135 Series

Gigabit Broadband Router



Vigor2135ax

- Gigabit Ethernet WAN port
- 2 USB ports for 3G/4G backup or network storage
- 2 Simultaneous VPN Tunnels including 2 SSL VPN
- Bandwidth Management with intelligent VoIP QoS
- Central Management for VigorAP
- Support DrayDDNS

|                | WLAN | VoIP | Fiber |
|----------------|------|------|-------|
| Vigor2135      |      |      |       |
| Vigor2135ac/ax | ●    |      |       |
| Vigor2135Vac   | ●    | ●    |       |
| Vigor2135FVac  | ●    | ●    | ●     |

## Vigor2915 Series

Dual-WAN Security Router



- Dual-WAN for load-balancing or redundancy
- 1 USB port for 3G/4G WAN, printer, or network storage
- 16 concurrent VPN tunnels including up to 8 SSL VPN
- Bandwidth management & QoS for the best VoIP quality
- SPI Firewall with Content Filtering by Apps, URL keyword, and web category
- IPv6 Support
- Support DrayDDNS

|             | WLAN |
|-------------|------|
| Vigor2915   |      |
| Vigor2915ac | ●    |

## Vigor2927 Series

Dual-WAN Security Router



- Dual-WAN for load-balancing or redundancy
- 2 x USB 2.0 or 1 x USB 2.0 (L model)
- SIM-base, 3G/4G LTE Router, CAT 6 up to 300Mbps connection speed (L model)
- 2 x FXS ports (V model)
- 50 simultaneous VPN tunnels, up to 25 SSL VPN
- SPI Firewall and Content Filtering
- Central Management for VigorAP & VigorSwitch
- Support DrayDDNS

### Vigor2927FLVax



|                      | WLAN | LTE | VoIP | Fiber |
|----------------------|------|-----|------|-------|
| Vigor2927            |      |     |      |       |
| Vigor2927L           |      | •   |      |       |
| Vigor2927ac/ax       | •    |     |      |       |
| Vigor2927Lac/Lax     | •    | •   |      |       |
| Vigor2927Vac/Vax     | •    |     | •    |       |
| Vigor2927FLVac/FLVax | •    | •   | •    | •     |

F model (Project base)

## Vigor2962 Series

High Performance Dual-WAN Router



- 4 LAN/WAN configurable ports (1 x 2.5GbE & 1 x SFP/GbE combo & 2 x GbE) (up to 2 WANs in simultaneously)
- 2 Gigabit Ethernet LAN ports
- 1x USB 2.0 & 1x USB 3.0
- 200 simultaneous VPN tunnels including up to 50 SSL VPN
- Support High Availability (hardware redundancy)
- PoE+ capable ports available on Vigor2962P
- Central Management for VigorAP & VigorSwitch
- Support DrayDDNS

|            | PoE |
|------------|-----|
| Vigor2962  |     |
| Vigor2962P | ●   |

## Vigor3910

High Performance 10G Router

- 8 x WAN/LAN switchable ports & 4 x fixed LAN ports
- 2 x 10G SFP+ & 2 x 2.5G Ethernet for WAN or LAN
- Quad-Core Processor provides 9 Gbps NAT throughput
- 1000k NAT sessions Recommended for a network of 500+ hosts
- 500 simultaneous VPN tunnels throughput over 3 Gbps
- Supported and managed by VigorACS
- Support DrayDDNS



## Vigor3912 Series

High Performance 10G Router

- 8 x WAN/LAN switchable ports & 4 x fixed LAN ports
- 2 x 10G SFP+ & 2 x 2.5G Ethernet for WAN or LAN
- Quad-Core Processor provides 18 Gbps NAT throughput
- 1000k NAT sessions Recommended for a network of 500+ hosts
- 500 simultaneous VPN tunnels throughput over 6 Gbps
- Supported and managed by VigorACS
- 256GB M.2 SDD (Vigor3912S)
- Support DrayDDNS



## Vigor166

G.Fast Modem

xDSL



- Support G.Fast/VDSL2 35b Super Vectoring/ADSL2+
- Multi-PVC for triple-play applications

## Vigor167

Super Vectoring Modem



- Support VDSL2 35b Super Vectoring/ADSL2+
- Multi-PVC for triple-play applications

## Vigor2620 LTE Series

LTE Router



- Dual SIM for 3G/4G/LTE Cellular Connectivity with speed up to 150 Mbps
- VDSL2/ADSL2+ Modem Router
- Robust Firewall & Security for Internet activities
- 2 VPN connections for remote access and LAN-to-LAN
- Bandwidth Management with intelligent VoIP QoS
- Support DrayDDNS

|             | DSL | WLAN |
|-------------|-----|------|
| Vigor2620L  | ●   |      |
| Vigor2620Ln | ●   | ●    |

## Vigor2763 Series

ADSL2/2+ & VDSL2 Router



- VDSL2/ADSL2+ Modem/Router
- Robust Firewall & Security for Internet activities
- 2 VPN connections for remote access and LAN-to-LAN
- Bandwidth Management with intelligent VoIP QoS
- Support DrayDDNS

|             | WLAN |
|-------------|------|
| Vigor2763   |      |
| Vigor2763ac | ●    |



## Vigor2765 Series

Super Vectoring Security Router



Vigor2765ax

- Support VDSL2 35b Super Vectoring/ADSL2+
- Robust Firewall & Security for Internet activities
- 2 VPN connections for remote access and LAN-to-LAN
- Bandwidth Management with intelligent VoIP QoS
- Support DrayDDNS

|                 | WLAN | VoIP |
|-----------------|------|------|
| Vigor2765       |      |      |
| Vigor2765 ac/ax | ●    |      |
| Vigor2765 Vac   | ●    | ●    |

## Vigor2766 Series

G.Fast Security Router



Vigor2766ax

- Support G.Fast/VDSL2 35b Super Vectoring/ADSL2+
- Robust Firewall & Security for Internet activities
- 2 VPN connections for remote access and LAN-to-LAN
- Bandwidth Management with intelligent VoIP QoS
- Support DrayDDNS

|                 | WLAN | VoIP |
|-----------------|------|------|
| Vigor2766       |      |      |
| Vigor2766 ac/ax | ●    |      |
| Vigor2766 Vac   | ●    | ●    |

# Vigor2865 Series

Super Vectoring Security Firewall



- Support VDSL2 35b Super Vectoring/ADSL2+
- 2 x USB 2.0 or 1 x USB 2.0 (L model)
- SIM-base, 3G/4G LTE Router, CAT 6 up to 300Mbps connection speed (L model)
- 2 x FXS ports (V model)
- 32 Simultaneous VPN Tunnels including 16 SSL VPN
- SPI Firewall with Content Filtering
- Central Management for VigorAP & VigorSwitch
- Support DrayDDNS

## Vigor2865FLVax



|                      | WLAN | LTE | VoIP | Fiber |
|----------------------|------|-----|------|-------|
| Vigor2865            |      |     |      |       |
| Vigor2865L           |      | •   |      |       |
| Vigor2865ac/ax       | •    |     |      |       |
| Vigor2865Lac/Lax     | •    | •   |      |       |
| Vigor2865Vac/Vax     | •    |     | •    |       |
| Vigor2865FLVac/FLVax | •    | •   | •    | •     |

F model (Project base)

# Vigor2866 Series

## G.Fast Security Firewall



- Support G.Fast /VDSL2 35b Super Vectoring/ADSL2+
- 2 x USB 2.0 or 1 x USB 2.0 (L model)
- SIM-base, 3G/4G LTE Router, CAT 6 up to 300Mbps connection speed (L model)
- 2 x FXS ports (V model)
- 32 Simultaneous VPN Tunnels including 16 SSL VPN
- SPI Firewall with Content Filtering
- Central Management for VigorAP & VigorSwitch
- Support DrayDDNS

## Vigor2866FLVax



|                      | WLAN | LTE | VoIP | Fiber |
|----------------------|------|-----|------|-------|
| Vigor2866            |      |     |      |       |
| Vigor2866L           |      | •   |      |       |
| Vigor2866ac/ax       | •    |     |      |       |
| Vigor2866Lac/Lax     | •    | •   |      |       |
| Vigor2866Vac/Vax     | •    |     | •    |       |
| Vigor2866FLVac/FLVax | •    | •   | •    | •     |

F model (Project base)

## VigorAP 903

11ac Dual-Band Wireless Mesh AP



- Concurrent dual band
- Support 2x2 11ac WAVE2
- Data rate up to 867Mbps in 5GHz and up to 400Mbps in 2.4GHz
- 5 GbE port (including 1 PoE) + 1 USB Port
- Plug-n-Play Meshing
- Airtime Fairness
- Band Steering
- AP-Assisted Roaming
- Built-in RADIUS server for 802.1x authentication
- Compliant with Central AP Management of Vigor Router and VigorACS

## VigorAP 906

802.11ax Dual-Band AP



- Concurrent Dual-band 802.11ax with 2x2 MIMO
- AX3000 dual-band wireless interface
- 5 GbE port (including 1 PoE)
- Plug-n-Play Meshing
- AirTime Fairness and Band Steering
- AP-Assisted Roaming
- Built-in RADIUS server for 802.1x authentication
- Compliant with Vigor central AP management and VigorACS

## VigorAP 912C

802.11ac Ceiling-mount AP



- Concurrent Dual-band 802.11ac with 2x2 MIMO
- Delivers data rate of up to 867 Mbps in the 5GHz band and 300 Mbps in the 2.4GHz band
- Plug-n-Play Meshing
- 1 x PoE-capable Gigabit Ethernet port
- AirTime Fairness and Band Steering
- AP-Assisted Roaming
- Built-in RADIUS server for 802.1x authentication
- Compliant with Vigor central AP management and VigorACS

---

## VigorAP 960C

802.11ax Ceiling-mount AP



- Concurrent Dual-band 802.11ax with 2x2 MIMO
- AX1800 dual-band wireless interface
- Plug-n-Play Meshing
- 1 x PoE-capable Gigabit Ethernet port
- AirTime Fairness and Band Steering
- AP-Assisted Roaming
- Built-in RADIUS server for 802.1x authentication
- Compliant with Vigor central AP management and VigorACS

## VigorAP 1062C

802.11ax Ceiling-mount AP



- Support 4x4:4 for both 2.4GHz and 5GHz, providing up to 6.0Gbps
- 1 x PoE-capable 2.5GbE port
- Utilize Transmission Opportunity with OFDMA
- Airtime Fairness
- Band Steering
- AP-Assisted Roaming
- Built-in RADIUS server for 802.1x authentication
- Compliant with Central AP Management of Vigor Router and VigorACS

## VigorAP 918R Series

11ac Dual-Band Outdoor AP



- IP 67-rated enclosure for outdoor usage, water-proof and dust-resistance
- 2.4/5GHz Dual band WiFi with 2x2 MIMO
- Secure VLAN/SSID grouping, up to 128 WLAN clients manageable per Radio
- IEEE 802.3az/Energy Efficient Ethernet PoE port
- Compatible with AP Management for centralized management
- High RF power for long-distance and expansive coverage
- Built-in 5GHz Direction Antenna selectable (918RPD)

|                | PoE Out | Directional Antenna |
|----------------|---------|---------------------|
| VigorAP 918R   |         |                     |
| VigorAP 918RPD | ●       | ●                   |

## Assisted Wi-Fi Roaming

### Making Transmission Effective

Disassociate the Wi-Fi clients who are out of the effective transmission range defined by custom Basic Rate or/and RSSI threshold, and force them to pick up another access point with a stronger signal.

### Resource Saving

Proactively kick out the clients with a low basic rate or low RSSI can prevent the access points trying to do ineffective transmission but saving the airtime, which will result in better Wi-Fi experience for all.

### No Controller Required

Assisted Roaming is a feature built in all Vigor Access Points and selected Wi-Fi routers. They operate without a wireless controller, providing an ideal solution for simple network deployment.



## Wireless Solution

### Wireless Solution

Good wireless experience has many different aspects, including easy setup, client seamless roaming, and more.

From home/SOHO with just a handful of APs, midsize office with tens of APs, all the way up to corporates with multiple branches, DrayTek has different AP management solution aiming to make it easy with each scenario.



## VigorSwitch G1080

### Smart Lite Gigabit Switch

- Simple and Easy to use network switch
- 8 x Gigabit capable ports
- Support HTTP Web Management
- QoS for application traffic prioritization
- Support 8 VLANs & 1 Trunking Group
- Power saving by 802.3az Energy Efficient Ethernet
- Support Loop Detection & Prevention



### Web Smart

## VigorSwitch G1282/P1282

### Web Smart Gigabit Switch

- 24 x Gigabit capable ports & 4 combo Gigabit SFP/RJ-45 ports
- 24 x Gigabit PoE+ capable ports with PoE power budget up to 400 watts (P1282)
- Auto Voice VLAN for easy VoIP deployment and best call quality
- QoS with 8 priority queues and rate limiting
- Dual-stack IPv4/IPv6 support
- Compliant with Switch Management of Vigor Router





## VigorSwitch G2100/P2100

### L2+ Managed Switch

- 8 x Gigabit capable ports & 2 x GbE SFP ports
- 8 x Gigabit PoE+ capable ports with PoE power budget up to 140 watts (P2100)
- VLAN configuration based on 802.1q tag, MAC address, and protocol
- Auto Voice VLAN and Auto Surveillance VLAN to optimize call and video quality
- Secure Local Network by 802.1x Port Security, ACL, IP Source Guard and DHCP Snooping
- Support IPv6 with MLD Snooping, IPv6 ACL, and IPv6 DNS Resolver
- Authentication by local database, multiple RADIUS, and TACACS+ servers
- Support SNMP v1/v2c/v3, RMON, and Syslog for network monitoring
- Compliant with Switch Management of Vigor Router and VigorACS
- Static Route
- DHCP Server



## VigorSwitch FX2120

### L2+ Managed Switch

- 12 x 10G SFP+ ports
- VLAN configuration based on 802.1q tag, MAC address, and protocol
- Auto Voice VLAN and Auto Surveillance VLAN to optimize call and video quality
- Secure Local Network by 802.1x Port Security, ACL, IP Source Guard and DHCP Snooping
- Support IPv6 with MLD Snooping, IPv6 ACL, and IPv6 DNS Resolver
- Authentication by local database, multiple RADIUS, and TACACS+ servers
- Support SNMP v1/v2c/v3, RMON, and Syslog for network monitoring
- Compliant with Switch Management of Vigor Router and VigorACS
- Static Route
- DHCP Server
- OpenFlow

The OpenFlow functionality is project-based and must be activated by DrayTek HQ.  
Please contact your Sales for further inquiries.



## VigorSwitch Q2121x/PQ2121x/PQ2121xb

### L2+ Managed 2.5GbE Switch

- 8 x 2.5Gigabit capable ports & 4 x 10G SFP+ ports
- 8 x PoE+ 2.5Gigabit capable ports with PoE power budget up to 140 watts (PQ2121x)
- 4 x PoE++ & 4 x PoE+ 2.5Gigabit capable ports with PoE power budget up to 240 watts (PQ2121xb)
- VLAN configuration based on 802.1q tag, MAC address, and protocol
- Auto Voice VLAN and Auto Surveillance VLAN to optimize call and video quality
- Secure Local Network by 802.1x Port Security, ACL, IP Source Guard and DHCP Snooping
- Support IPv6 with MLD Snooping, IPv6 ACL, and IPv6 DNS Resolver
- Authentication by local database, multiple RADIUS, and TACACS+ servers
- Support SNMP v1/v2c/v3, RMON, and Syslog for network monitoring
- Compliant with Switch Management of Vigor Router and VigorACS
- Static Route
- DHCP Server



## VigorSwitch Q2200x/PQ2200xb

### L2+ Managed 2.5GbE Switch

- 16 x 2.5Gigabit capable ports & 4 x 10G SFP+ ports
- 4 x PoE++ & 12 x PoE+ 2.5Gigabit capable ports with PoE power budget up to 400 watts (PQ2200xb)
- VLAN configuration based on 802.1q tag, MAC address, and protocol
- Auto Voice VLAN and Auto Surveillance VLAN to optimize call and video quality
- Secure Local Network by 802.1x Port Security, ACL, IP Source Guard and DHCP Snooping
- Support IPv6 with MLD Snooping, IPv6 ACL, and IPv6 DNS Resolver
- Authentication by local database, multiple RADIUS, and TACACS+ servers
- Support SNMP v1/v2c/v3, RMON, and Syslog for network monitoring
- Compliant with Switch Management of Vigor Router and VigorACS
- Static Route
- DHCP Server



## VigorSwitch G2282x/P2282x

### L2+ Managed Switch

- 24 x Gigabit capable ports & 4 x 10G SFP+ ports
- 24 x Gigabit PoE+ capable ports with PoE power budget up to 400 watts (P2282x)
- VLAN configuration based on 802.1q tag, MAC address, and protocol
- Auto Voice VLAN and Auto Surveillance VLAN to optimize call and video quality
- Secure Local Network by 802.1x Port Security, ACL, IP Source Guard and DHCP Snooping
- Support IPv6 with MLD Snooping, IPv6 ACL, and IPv6 DNS Resolver
- Authentication by local database, multiple RADIUS, and TACACS+ servers
- Support SNMP v1/v2c/v3, RMON, and Syslog for network monitoring
- Compliant with Switch Management of Vigor Router and VigorACS
- AC/DC Dual Input
- Static Route
- DHCP Server
- Stacking



## VigorSwitch G2540xs/P2540xs

### L2+ Managed Switch

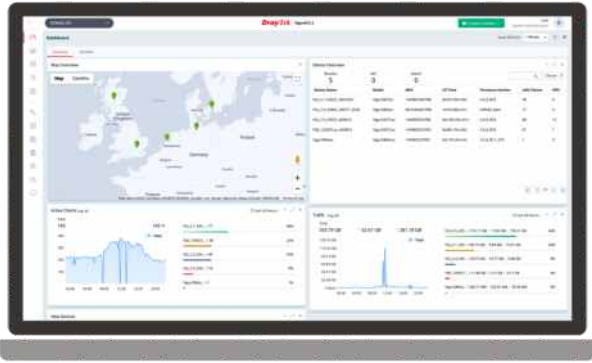
- 48 x Gigabit capable ports & 6 x 10G SFP+ ports
- 48 x Gigabit PoE+ capable ports with PoE power budget up to 400 watts (P2540xs)
- VLAN configuration based on 802.1q tag, MAC address, and protocol
- Auto Voice VLAN and Auto Surveillance VLAN to optimize call and video quality
- Secure Local Network by 802.1x Port Security, ACL, IP Source Guard and DHCP Snooping
- Authentication by local database, multiple RADIUS, and TACACS+ servers
- Support SNMP v1/v2c/v3, RMON, and Syslog for network monitoring
- Compliant with Switch Management of Vigor Router and VigorACS
- Support IPv6 with MLD Snooping, IPv6 ACL, and IPv6 DNS Resolver
- Static Route
- DHCP Server
- OpenFlow



The OpenFlow functionality is project-based and must be activated by DrayTek HQ. Please contact your Sales for further inquiries.

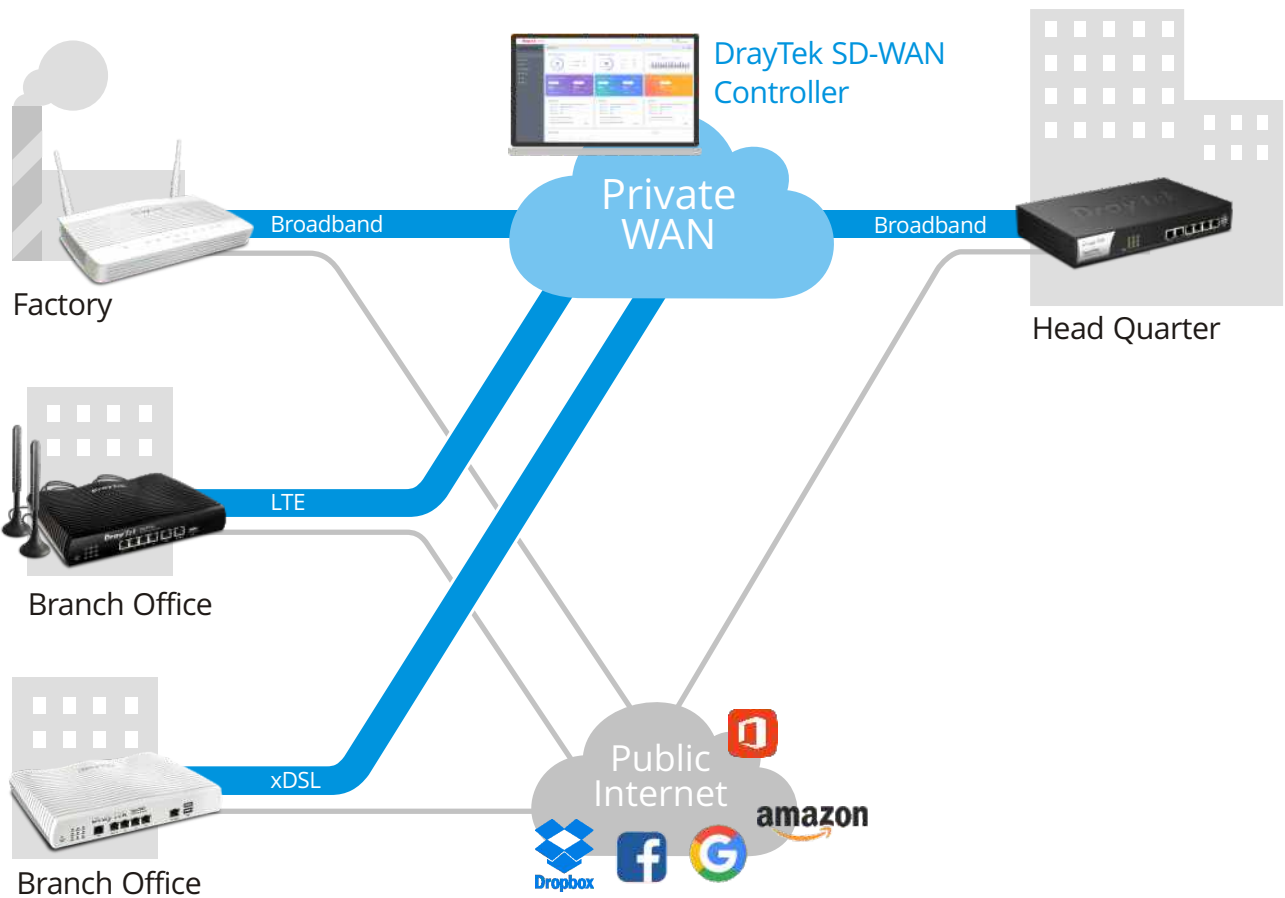
## VigorACS 3

NMS for Vigor Devices and SD-WAN Orchestrator



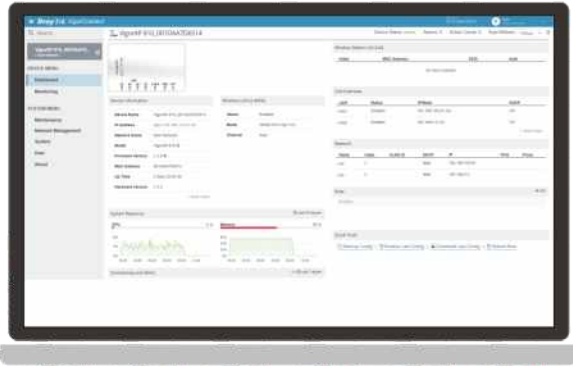
- Zero Touch Deployment and Provisioning
- Auto-VPN for Hub-and-Spoke or Mesh Topology
- Interface Quality and SLA
- VoIP Optimization and Monitoring
- Application Visibility
- Application-Based SD-WAN Policy
- Customized Hotspot Page with Multilingual
- Hotspot Clients Analytics
- ACS Server Load Balancing / Failover

## SD-WAN Solution



# VigorConnect

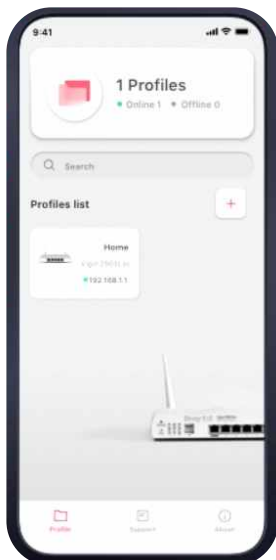
Local Network Management Software for DrayTek Devices



- Automatically discover all VigorAPs/VigorSwitches on your LAN and manage up to 100 devices
- Provision AP profile to APs in a network to set up several VigorAPs; setup the VLAN or PoE for selected Switches
- Get notified when an AP/Switch lost connection with the VigorConnect Server
- Network insights about AP, client, and CPU usage, etc. over a specified period
- Schedule an off-hour firmware upgrade or configure backup/restore

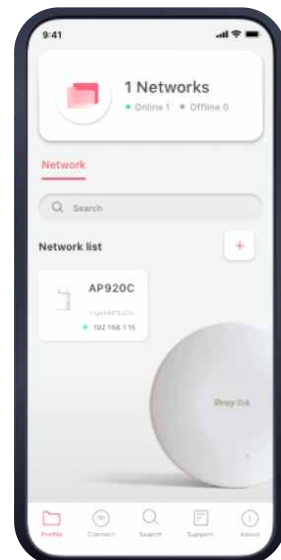
## DrayTek Router App

- Work with Vigor Router Series
- Setup major Router functions
- Parental control by content/time



## DrayTek Wireless App

- Work with VigorAP Series
- Setup Mesh/Wi-Fi
- Parental control by time



## VigorPoE 600

### 802.3af/at PoE Injector

VigorPoE 600 is a single-port passive PoE injector that delivers both power and data to connected PoE devices through a single cable. It can work with all DrayTek PoE compliant PDs, such as IP Cameras, Access Points, and others. The total power output can reach up to 60.5 watts, especially suitable for advanced PD like VigorAP920RPD or Vigor918RPD which consumes more power.

VigorPoE 600 provides an ideal solution with high flexibility to expand your network anywhere, never limited to the power line or outlet, and lower the installation cost.



## DAM-FX10-20K Series

### 10G SFP+ module

DAM-FX10-20K Series is an SFP+ Optical single transceiver. It is a small form-factor pluggable transceiver and is designed for use in 10 Gigabit Ethernet connection for a distance of up to 20km over a single SFP+ Module.

DAM-FX10-20K Series provides a high-performance and cost-effective solution, which is ideal for long-distance fiber connectivity. It is available in 2 types, **DAM-FX10-20K-A** (Type A) and **DAM-FX10-20K-B** (Type B).



## DAC-CX10

### 10G SFP+ Direct Attach Passive Copper Cable

DAC-CX10 is designed for providing high-speed data link via copper wire and support both Gigabit and 10 Gigabit Ethernet data rate, compatible to SFP+ MSA to meet Fiber Channel industry standard requirements to ensure performance and reliability.

It is available in 2 models, **DAC-CX10-1m** (Length:1m) and **DAC-CX10-3m** (Length:3m).



## USB Thermometer

Temperature Sensor for DrayTek routers

- Direct router/AP connection
- Outer sensor included (1M)
- Data is displayed in °F or °C
- Informative Web Interface
- Alarm Max/Min Thresholds
- Continuous Reporting to syslog
- Email & SMS Reporting on threshold breach
- RoHS Compliant



## DrayTek Rack-mount Plate

The rack mount brackets is used for mounting the router onto a 19" standard rack.



## Antenna Series

|                                    | ANT-1205                                    | ANT-2520                                     |
|------------------------------------|---|--|
| Description                        | 2.4GHz/5GHz Indoor Omni-Directional Antenna | 2.4GHz/5GHz Indoor Directional Patch Antenna |
| Environment                        | Indoor                                      | Indoor                                       |
| Frequency Range                    | 2400~2500 MHz<br>5150~5850 MHz              | 2400~2500 MHz<br>5150~5875 MHz               |
| Peak Gain @ 2.4GHz<br>@ 5GHz       | 5 dBi<br>4.5 dBi                            | 7.5 dBi<br>10 dBi                            |
| VSWR @ 2.4GHz<br>@ 5GHz            | < 2.0<br>< 2.0                              | ≤ 2.0  |
| Polarization                       | Linear                                      | Vertical, Linear                             |
| HPBW/Horizontal @ 2.4GHz<br>@ 5GHz |   | 70°<br>60°                                   |
| HPBW/Vertical @ 2.4GHz<br>@ 5GHz   |   | 60°<br>30°                                   |
| Power Handling                     | 1W  | 2W   |
| Impedance                          | 50 Ω  | 50 Ω   |
| Connector                          | RP SMA Plug                                 | RP SMA Plug                                  |



## Broadband Router

|                      |                                | Vigor2135 series |                         |                            |                     |          | Vigor2915 series        |        |
|----------------------|--------------------------------|------------------|-------------------------|----------------------------|---------------------|----------|-------------------------|--------|
|                      |                                | 2135             | 2135ac                  | 2135ax                     | 2135Vac             | 2135FVac | 2915                    | 2915ac |
| WAN                  | Fixed WAN                      | 1 x GbE          |                         |                            | 1 x SFP             | 1 x GbE  |                         |        |
|                      | Switchable WAN/LAN             |                  |                         |                            |                     |          | 1 x GbE                 |        |
| LAN                  | Fixed LAN                      | 4 x GbE          |                         |                            |                     | 3 x GbE  |                         |        |
|                      | LAN Subnet                     | 4                |                         |                            |                     | 4        |                         |        |
|                      | DMZ Port                       |                  |                         |                            |                     |          |                         |        |
| USB Port             |                                | 2                |                         |                            |                     | 1        |                         |        |
| WLAN                 | Standard                       |                  | 11a/b/g/n/<br>ac wave 2 | 11a/b/g/n/<br>ac wave 2/ax | 11a/b/g/n/ac Wave 2 |          | 11a/b/g/n/<br>ac wave 2 |        |
|                      | 2.4GHz                         |                  |                         | •                          |                     |          | •                       |        |
|                      | 5GHz                           |                  |                         | •                          |                     |          | •                       |        |
|                      | Mesh                           |                  |                         | •                          |                     |          |                         |        |
| VPN                  | Max. VPN                       | 2                |                         |                            |                     | 16       |                         |        |
|                      | Max. SSL VPN                   | 2                |                         |                            |                     | 8        |                         |        |
|                      | VPN Matcher                    | •                |                         |                            |                     | •        |                         |        |
| Routing              | Static Route                   | •                |                         |                            |                     | •        |                         |        |
|                      | Policy Route                   | •                |                         |                            |                     | •        |                         |        |
|                      | RIP                            | •                |                         |                            |                     | •        |                         |        |
|                      | BGP                            |                  |                         |                            |                     |          |                         |        |
|                      | OSPF                           |                  |                         |                            |                     |          |                         |        |
| Content Filter       | APP, Web Category, DNS Keyword | •                |                         |                            |                     | •        |                         |        |
|                      | URL Keyword                    | •                |                         |                            |                     | •        |                         |        |
| NAT Sessions         |                                | 50K              |                         |                            |                     | 30K      |                         |        |
| Bandwidth Management |                                | •                |                         |                            |                     | •        |                         |        |
| DrayDDNS             |                                | •                |                         |                            |                     | •        |                         |        |
| VoIP                 |                                |                  |                         |                            | •                   |          |                         |        |
| VPN Management       |                                |                  |                         |                            |                     |          |                         |        |
| AP Management        |                                | 2                |                         |                            |                     |          |                         |        |
| Switch Management    |                                |                  |                         |                            |                     |          |                         |        |



| Vigor2927 series |                         |                            |                         |                      | Vigor2962 series                            | Vigor3910                          | Vigor3912 series                   |
|------------------|-------------------------|----------------------------|-------------------------|----------------------|---|------------------------------------|------------------------------------|
| 2927             | 2927ac                  | 2927ax                     | 2927Vac                 | 2927Lac              | 2962/P                                      | 3910                               | 3912/S                             |
| 1 x GbE          |                         |                            |                         | 1 x GbE +<br>1 x LTE |   |                                    |                                    |
| 1 x GbE          |                         |                            |                         |                      | 1 x 2.5GbE + 2 x GbE +<br>1 x GbE/SFP Combo | 2 x 2.5GbE +<br>4 x GbE + 2 x SFP+ | 2 x 2.5GbE +<br>4 x GbE + 2 x SFP+ |
| 5 x GbE          |                         |                            |                         |                      | 2 x GbE                                     | 4 x GbE                            | 4 x GbE                            |
| 8                |                         |                            |                         |                      | 20  | 100                                | 100                                |
| 1                |                         |                            |                         |                      |   |                                    |                                    |
| 2                |                         |                            |                         | 1                    | 2   | 2                                  | 2                                  |
|                  | 11a/b/g/n/<br>ac wave 2 | 11a/b/g/n/<br>ac wave 2/ax | 11a/b/g/n/<br>ac wave 2 |                      |   |                                    |                                    |
|                  |                         |                            | •                       |                      |   |                                    |                                    |
|                  |                         |                            | •                       |                      |   |                                    |                                    |
|                  |                         |                            | •                       |                      |   |                                    |                                    |
| 50               |                         |                            |                         |                      | 200   | 500                                | 500                                |
| 25               |                         |                            |                         |                      | 50  | 200                                | 200                                |
| •                |                         |                            |                         |                      | •   | •                                  | •                                  |
| •                |                         |                            |                         |                      | •   | •                                  | •                                  |
| •                |                         |                            |                         |                      | •   | •                                  | •                                  |
| •                |                         |                            |                         |                      | •   | •                                  | •                                  |
| •                |                         |                            |                         |                      | •   | •                                  | •                                  |
| •                |                         |                            |                         |                      | •   | •                                  | •                                  |
| •                |                         |                            |                         |                      | •   | •                                  | •                                  |
| •                |                         |                            |                         |                      | •   | •                                  | •                                  |
| •                |                         |                            |                         |                      | •   | •                                  | •                                  |
| 60K              |                         |                            |                         |                      | 300K  | 1000K                              | 1000K                              |
| •                |                         |                            |                         |                      | •   | •                                  | •                                  |
| •                |                         |                            |                         |                      | •   | •                                  | •                                  |
|                  |                         |                            | •                       |                      |   |                                    |                                    |
| 8                |                         |                            |                         |                      |   |                                    |                                    |
| 20               |                         |                            |                         |                      | 50  | 50                                 | 50                                 |
| 10               |                         |                            |                         |                      | 30  | 30                                 | 30                                 |

## xDSL Router

|                      |                                | Vigor160 series        |                 | Vigor2620 LTE series |        |
|----------------------|--------------------------------|------------------------|-----------------|----------------------|--------|
|                      |                                | 166                    | 167             | 2620L                | 2620Ln |
| WAN                  | Fixed WAN Port                 | 1 x A/VDSL /35b/G.Fast | 1 x A/VDSL /35b | 1 x A/VDSL + 2 x LTE |        |
|                      | WAN/LAN Switchable Port        |                        |                 | 1 x GbE              |        |
| LAN                  | Fixed LAN Port                 | 2 x GbE                |                 | 1 x GbE              |        |
|                      | LAN Subnet                     | 1                      |                 | 2                    |        |
|                      | DMZ Port                       |                        |                 |                      |        |
| USB Port             |                                |                        |                 |                      |        |
| WLAN                 | Standard                       |                        |                 | 11b/g/n              |        |
|                      | 2.4GHz                         |                        |                 | •                    |        |
|                      | 5GHz                           |                        |                 |                      |        |
|                      | Mesh                           |                        |                 |                      |        |
| VPN                  | Max. VPN                       |                        |                 | 2                    |        |
|                      | Max. SSL VPN                   |                        |                 | 2                    |        |
|                      | VPN Matcher                    |                        |                 | •                    |        |
| Routing              | Static Route                   | •                      |                 | •                    |        |
|                      | Policy Route                   |                        |                 | •                    |        |
|                      | RIP                            | •                      |                 | •                    |        |
|                      | BGP                            |                        |                 | •                    |        |
|                      | OSPF                           |                        |                 |                      |        |
| Content Filter       | APP, Web Category, DNS Keyword |                        |                 | •                    |        |
|                      | URL Keyword                    | •                      |                 | •                    |        |
| NAT Sessions         |                                | 10K                    |                 | 30K                  |        |
| Bandwidth Management |                                |                        |                 | •                    |        |
| DrayDDNS             |                                |                        |                 |                      |        |
| VoIP                 |                                |                        |                 |                      |        |
| VPN Management       |                                |                        |                 |                      |        |
| AP Management        |                                |                        |                 | 2                    |        |
| Switch Management    |                                |                        |                 |                      |        |

| Vigor2763 series |                         | Vigor2765 series |                         |                            |                         |
|------------------|-------------------------|------------------|-------------------------|----------------------------|-------------------------|
| 2763             | 2763ac                  | 2765             | 2765ac                  | 2765ax                     | 2765Vac                 |
| 1 x AVDSL        |                         | 1 x AVDSL/35b    |                         |                            |                         |
| 1 x GbE          |                         | 1 x GbE          |                         |                            |                         |
| 3 x GbE          |                         | 3 x GbE          |                         |                            |                         |
| 4                |                         | 4                |                         |                            |                         |
| 2                |                         | 2                |                         |                            |                         |
|                  | 11a/b/g/n/<br>ac wave 2 |                  | 11a/b/g/n/<br>ac wave 2 | 11a/b/g/n/<br>ac wave 2/ax | 11a/b/g/n/<br>ac wave 2 |
|                  | •                       |                  |                         | •                          |                         |
|                  | •                       |                  |                         | •                          |                         |
|                  | •                       |                  |                         | •                          |                         |
| 2                |                         | 2                |                         |                            |                         |
| 2                |                         | 2                |                         |                            |                         |
|                  | •                       |                  |                         | •                          |                         |
|                  | •                       |                  |                         | •                          |                         |
|                  | •                       |                  |                         | •                          |                         |
|                  | •                       |                  |                         | •                          |                         |
|                  | •                       |                  |                         | •                          |                         |
|                  | •                       |                  |                         | •                          |                         |
|                  | •                       |                  |                         | •                          |                         |
| 50K              |                         | 50K              |                         |                            |                         |
|                  | •                       |                  |                         | •                          |                         |
|                  | •                       |                  |                         | •                          |                         |
|                  |                         |                  |                         |                            | •                       |
| 2                |                         | 2                |                         |                            |                         |

# Feature Matrix

## xDSL Router

|                      |                                | Vigor2766 series     |                         |                            |                         | Vigor2865 series |                         |
|----------------------|--------------------------------|----------------------|-------------------------|----------------------------|-------------------------|------------------|-------------------------|
|                      |                                | 2766                 | 2766ac                  | 2766ax                     | 2766Vac                 | 2865             | 2865ac                  |
| WAN                  | Fixed WAN Port                 | 1 x AVDSL/35b/G.Fast |                         |                            |                         | 1 x AVDSL/35b    |                         |
|                      | WAN/LAN Switchable Port        | 1 x GbE              |                         |                            |                         | 1 x GbE          |                         |
| LAN                  | Fixed LAN Port                 | 3 x GbE              |                         |                            |                         | 5 x GbE          |                         |
|                      | LAN Subnet                     | 4                    |                         |                            |                         | 8                |                         |
|                      | DMZ Port                       |                      |                         |                            |                         | 1                |                         |
| USB Port             |                                | 2                    |                         |                            |                         | 2                |                         |
| WLAN                 | Standard                       |                      | 11a/b/g/n/<br>ac wave 2 | 11a/b/g/n/<br>ac wave 2/ax | 11a/b/g/n/<br>ac wave 2 |                  | 11a/b/g/n/<br>ac wave 2 |
|                      | 2.4GHz                         |                      |                         | •                          |                         |                  | •                       |
|                      | 5GHz                           |                      |                         | •                          |                         |                  | •                       |
|                      | Mesh                           |                      |                         | •                          |                         |                  | •                       |
| VPN                  | Max. VPN                       | 2                    |                         |                            |                         | 32               |                         |
|                      | Max. SSL VPN                   | 2                    |                         |                            |                         | 16               |                         |
|                      | VPN Matcher                    | •                    |                         |                            |                         | •                |                         |
| Routing              | Static Route                   | •                    |                         |                            |                         | •                |                         |
|                      | Policy Route                   | •                    |                         |                            |                         | •                |                         |
|                      | RIP                            | •                    |                         |                            |                         | •                |                         |
|                      | BGP                            |                      |                         |                            |                         | •                |                         |
|                      | OSPF                           |                      |                         |                            |                         |                  |                         |
| Content Filter       | APP, Web Category, DNS Keyword | •                    |                         |                            |                         | •                |                         |
|                      | URL Keyword                    | •                    |                         |                            |                         | •                |                         |
| NAT Sessions         |                                | 50K                  |                         |                            |                         | 60K              |                         |
| Bandwidth Management |                                | •                    |                         |                            |                         | •                |                         |
| DrayDDNS             |                                | •                    |                         |                            |                         | •                |                         |
| VoIP                 |                                |                      |                         |                            |                         | •                |                         |
| VPN Management       |                                |                      |                         |                            |                         | 8                |                         |
| AP Management        |                                | 2                    |                         |                            |                         | 20               |                         |
| Switch Management    |                                |                      |                         |                            |                         | 10               |                         |

| Vigor2865 series           |                         |                            | Vigor2866 series        |                            |                         |         |                                    |
|----------------------------|-------------------------|----------------------------|-------------------------|----------------------------|-------------------------|---------|------------------------------------|
| 2865ax                     | 2865Vac                 | 2865Lac                    | 2866                    | 2866ac                     | 2866ax                  | 2866Vac | 2866Lac                            |
| 1 x AVDSL/35b              |                         | 1 x AVDSL/35b<br>+ 1 x LTE | 1 x AVDSL/35b/G.Fast    |                            |                         |         | 1 x AVDSL/35b/<br>G.Fast + 1 x LTE |
| 1 x GbE                    |                         |                            | 1 x GbE                 |                            |                         |         |                                    |
| 5 x GbE                    |                         |                            | 5 x GbE                 |                            |                         |         |                                    |
| 8                          |                         |                            | 8                       |                            |                         |         |                                    |
| 1                          |                         |                            | 1                       |                            |                         |         |                                    |
| 2                          |                         | 1                          | 2                       |                            |                         |         | 1                                  |
| 11a/b/g/n/<br>ac wave 2/ax | 11a/b/g/n/<br>ac wave 2 |                            | 11a/b/g/n/<br>ac wave 2 | 11a/b/g/n/<br>ac wave 2/ax | 11a/b/g/n/<br>ac wave 2 |         |                                    |
|                            | •                       |                            |                         |                            | •                       |         |                                    |
|                            | •                       |                            |                         |                            | •                       |         |                                    |
|                            | •                       |                            |                         |                            | •                       |         |                                    |
| 32                         |                         |                            | 32                      |                            |                         |         |                                    |
| 16                         |                         |                            | 16                      |                            |                         |         |                                    |
|                            | •                       |                            |                         |                            | •                       |         |                                    |
|                            | •                       |                            |                         |                            | •                       |         |                                    |
|                            | •                       |                            |                         |                            | •                       |         |                                    |
|                            | •                       |                            |                         |                            | •                       |         |                                    |
|                            | •                       |                            |                         |                            | •                       |         |                                    |
|                            | •                       |                            |                         |                            | •                       |         |                                    |
|                            | •                       |                            |                         |                            | •                       |         |                                    |
| 60K                        |                         |                            | 60K                     |                            |                         |         |                                    |
|                            | •                       |                            |                         |                            | •                       |         |                                    |
|                            | •                       |                            |                         |                            | •                       |         |                                    |
|                            | •                       |                            |                         |                            | •                       |         |                                    |
| 8                          |                         |                            | 8                       |                            |                         |         |                                    |
| 20                         |                         |                            | 20                      |                            |                         |         |                                    |
| 10                         |                         |                            | 10                      |                            |                         |         |                                    |

## Access Point

|                                      |        | VigorAP 903             | VigorAP 906                | VigorAP 912C            | VigorAP 960C               | VigorAP 1062C              |
|--------------------------------------|--------|-------------------------|----------------------------|-------------------------|----------------------------|----------------------------|
|                                      |        | 903                     | 906                        | 912C                    | 960C                       | 1062C                      |
| Band                                 | 2.4GHz | •                       | •                          | •                       | •                          | •                          |
|                                      | 5GHz   | •                       | •                          | •                       | •                          | •                          |
| Max. Link Rate (Mbps)                |        | 400 + 867               | 574+2400                   | 300 + 867               | 600+1200                   | 1200+4800                  |
| Max. Clients (per band)              |        | 128 (64)                | 256 (128)                  | 256 (128)               | 256 (128)                  | 256 (128)                  |
| Environment                          |        | Indoor                  | Indoor                     | Indoor                  | Indoor                     | Indoor                     |
| LAN Switch                           |        | 5 x GbE                 | 5 x GbE                    | 1 x GbE                 | 1 x GbE                    | 1 x 2.5GbE                 |
| USB Port                             |        | 1                       |                            |                         |                            |                            |
| Power Input                          |        | DC / PoE                | DC / PoE                   | DC / PoE                | DC / PoE                   | DC / PoE                   |
| PoE Out                              |        |                         |                            |                         |                            |                            |
| Antenna                              |        | 2 x 2<br>External       | 2 x 2<br>External          | 2 x 2<br>Internal       | 2 x 2<br>Internal          | 4 x 4<br>Internal          |
| Mounting<br>(Desk/Wall/Ceiling/Pole) |        | D/W                     | D/W                        | C/W                     | C/W                        | C/W                        |
| Wi-Fi Standard                       |        | 11a/b/g/n/<br>ac wave 2 | 11a/b/g/n/<br>ac wave 2/ax | 11a/b/g/n/<br>ac wave 2 | 11a/b/g/n/<br>ac wave 2/ax | 11a/b/g/n/<br>ac wave 2/ax |
| AP-Assisted Roaming                  |        | •                       | •                          | •                       | •                          | •                          |
| AirTime Fairness                     |        | •                       | •                          | •                       | •                          | •                          |
| Band Steering                        |        | •                       | •                          | •                       | •                          | •                          |
| Max. Number of SSID<br>(per band)    |        | 8 (4)                   | 8 (4)                      | 8 (4)                   | 8 (4)                      | 16 (8)                     |
| 802.1q tag-based VLAN                |        | •                       | •                          | •                       | •                          | •                          |
| Built-in RADIUS Server               |        | •                       | •                          | •                       | •                          | •                          |
| Stand-alone Operation                |        | •                       | •                          | •                       | •                          | •                          |
| Mesh                                 |        | Root, Node              | Root, Node                 | Root, Node              | Root, Node                 | Root, Node                 |
| VigorRouter Mgmt. (APM)              |        | •                       | •                          | •                       | •                          | •                          |

| VigorAP 918R series     |                              |
|-------------------------|------------------------------|
| 918R                    | 918RPD                       |
| •                       | •                            |
| •                       | •                            |
| 400 + 867               | 400 + 867                    |
| 256 (128)               | 256 (128)                    |
| Outdoor                 | Outdoor                      |
| 1 x GbE                 | 2 x GbE                      |
|                         |                              |
| PoE                     | PoE                          |
|                         | •                            |
| 2 x 2<br>External       | 2 x 2<br>External + Internal |
| W/P                     | W/P                          |
| 11a/b/g/n/<br>ac wave 2 | 11a/b/g/n/<br>ac wave 2      |
| •                       | •                            |
| •                       | •                            |
| •                       | •                            |
| 8 (4)                   | 8 (4)                        |
| •                       | •                            |
| •                       | •                            |
| •                       | •                            |
| Root, Node              | Root, Node                   |
| •                       | •                            |

## Switch

|                 |  | Smart Lite | Web Smart    |              | L2+ Managed     |                 |                 |
|-----------------|--|------------|--------------|--------------|-----------------|-----------------|-----------------|
|                 |  | G1080      | G1282        | P1282        | G2100           | P2100           | FX2120          |
| Ports           | RJ-45  | 8 x GbE    | 24 x GbE     | 24 x GbE     | 8 x GbE         | 8 x GbE         |                 |
|                 | SFP  |            |              |              | 2               | 2               | 12 (SFP+)       |
|                 | SFP/GbE Combo  |            | 4            | 4            |                 |                 |                 |
|                 | Console  |            |              |              | •               | •               | •               |
| PoE             | Ports  |            |              | 24 PoE+      |                 | 8 PoE+          |                 |
|                 | Power Budget   |            |              | 400          |                 | 140             |                 |
| LAN             | Spanning Tree  |            | STP, RSTP    | STP, RSTP    | STP, RSTP, MSTP | STP, RSTP, MSTP | STP, RSTP, MSTP |
|                 | LACP (Max. Group Number / Max. Number in each group) | 1 / 2      | 8 / 8        | 8 / 8        | 4 / 8           | 4 / 8           | 8 / 8           |
|                 | ONVIF Surveillance                                   |            | •            | •            | •               | •               | •               |
| VLAN            | Tag-Based  | •          | •            | •            | •               | •               | •               |
|                 | MAC-Based  |            | •            | •            | •               | •               | •               |
|                 | Voice & Surveillance VLAN                            |            | •            | •            | •               | •               | •               |
|                 | GVRP   |            |              |              | •               | •               | •               |
|                 | QinQ (Basic)   |            |              |              | •               | •               | •               |
| Layer3 Features | Static Route   |            |              |              | •               | •               | •               |
|                 | VLAN Route   |            |              |              | •               | •               | •               |
|                 | DHCP Server  |            |              |              | •               | •               | •               |
| Security        | IP Conflict Detection & Prevention                   |            | •            | •            | •               | •               | •               |
|                 | IPSG   |            | •            | •            | •               | •               | •               |
|                 | ACL  |            | •            | •            | •               | •               | •               |
|                 | 802.1X/ MAC Authentication                           |            |              |              | •               | •               | •               |
|                 | DAI  |            |              |              | •               | •               | •               |
|                 | DHCP Snooping  |            |              |              | •               | •               | •               |
| Multicast       | IGMP Snooping  | v2         | v2, v3(BISS) | v2, v3(BISS) | v2, v3(BISS)    | v2, v3(BISS)    | v2, v3(BISS)    |
|                 | MLD Snooping   |            |              |              | v1, v2          | v1, v2          | v1, v2          |
| Management      | sFlow  |            |              |              |                 |                 | •               |
|                 | SNMP   |            | v1/v2c/v3    | v1/v2c/v3    | v1/v2c/v3       | v1/v2c/v3       | v1/v2c/v3       |
|                 | LLDP   |            | •            | •            | •               | •               | •               |
|                 | SWM  | •          | •            | •            | •               | •               | •               |









# ***DrayTek***

[www.draytek.com](http://www.draytek.com)

Tel: +886-3-5972727 Fax: +886-3-5972121 E-mail: [info@draytek.com](mailto:info@draytek.com)

Trademarks and brand names are the properties of their respective owners.  
The scope of delivery and other details are subject to change without prior notice.

Copyrights © DrayTek Corp. All right reserved.