

DAY & NIGHT 1080P HD VANDAL RESISTANT DOME IP CAMERA



IK10 vandal proof dome LD6122X in the L series is featuring built-in Sense up+ technology to deliver stunning video in low-light conditions. Utilizing intelligent image signal processing, 2D WDR function, AGC control, and 3D Noise Reduction, the combination successfully delivers the ultimate low-light image without motion blur. The IP67-rated housing is designed to help the camera body withstand rain and dust and ensures operation under a multitude of harsh weather conditions. Support with PoE, privacy mask, White balance, and minimum illumination 0.25 Lux at F1.4 Low Light Mode.

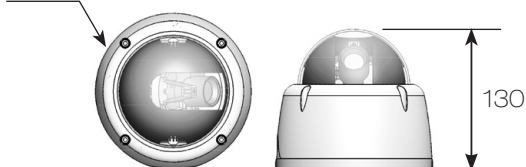
FEATURES :

- Full HD 2 megapixel CMOS image sensor
- True H.264 AVC/MPEG-4 part 10
- H.264 and Motion JPEG triple Video streaming
- 3D Noise Reduction (MCTF)
- 2D WDR function
- Digital zoom supported
- Audio / motion / alarm detection
- Impact Resistant Polycarbonate Dome Cover
- Day & Night (IR cut removable)
- 2-way audio supported
- Digital I/O : 1 in, 1 out
- ONVIF supported

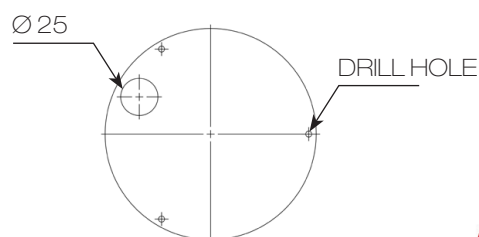
DIMENSIONS : (Unit : mm)

Ø145 x 130

Ø 145



INSTALLATION HOLE SITE DIAGRAM :



SPECIFICATION :

Name	Day & Night 1080P HD Vandal Resistant Dome IP Camera		
Model	LD6122EX3.6		
Lens	Focal length	3.3 – 12 mm	
	Iris	F1.4	
	Angle of view	H	79.3° – 29.8°
		V	59.4° – 22.4°
	D	99° – 37.3°	
Pick up element	1/2.7" CMOS image sensor		
Effective pixels	1920 (H) x 1080 (V) = 2,073,600 (pixel)		
Chip size	5.856mm (H) x 3.276mm (V)		
Scanning system	Progressive Scan		
Infrared cut filter	Auto / Schedule / Day (Color) / Night (Mono)		
Min. illumination	0.1 Lux at F1.4 (Low Light Mode) / 0 Lux with IR LED ON		
White balance	Auto / Tungsten / Indoor / Fluorescents1 / Fluorescents2 / Outdoor1 / Outdoor2		
Back light compensation	Off / On		
Electronic shutter	1/30(1/25)s – 1/8000s		
Sense up	Off / 1 Frame / 2 Frames / 3 Frames / 7 Frames		
Sense up +	Yes		
Auto gain control	36 dB Variable Gain		
3D Noise Reduction	Off / 1 – 32 Selectable		
2D WDR	Off / x2 / x3 / x4		
Privacy masking	Off / On (4 zones)		
Image effects	Brightness, Contrast, Hue, Saturation, Sharpness, Mirror, Flip		
Live Video output	CVBS 1.0Vp-p, 75 ohm, RCA connector		
Audio in / output	Mono, 1.4 Vp-p , 50 K Ω , Terminal connector		
IP rating	IP67		
Vandal resistant rating	IK10		
Operating temperature	-40°C – +50°C (-40°F – 122°F)		
Dimension	Ø 145 x 130mm		
Weight	960g		
Power supply	DC12V \pm 10% / PoE (IEEE 802.3af compliant)		
Power consumption	DC12V, 6W / PoE, 7.5W		

Network	
Video compression	H.264 , Motion JPEG
Resolution	1080P(1920 x 1080), 720P(1280 x 720), D1(720 x 480), CIF(352 x 240)
Maximum frame rate	H.264 : up to 15 fps @ 1920 x 1080 , 30fps @ 1280 x 720 , 30fps @ 720 x 480 Motion JPEG : up to 15 fps @ 1920 x 1080 , 30 fps @ 720 x 480 , 30 fps @ 352 x 240
Video streaming protocol	RTP/HTTP, RTP/TCP, RTP/UDP, Multicast
Video bitrate	128Kbps – 5Mbps Frame rate and bit rate controllable on-the-fly VBR / CBR / GOP supported
Security	Base64 HTTP encryption Multiple user access levels with password protection 10 user accounts available
Users	8 simultaneous users
Digital zoom	Yes
OSD	Text overlay for date, time, and camera name
Alarm function	Alarm / motion detection triggering recording into SD card Image upload over FTP and E-mail by audio / motion detection
CPU, memory	Embedded SoC ARM11, 528MHz, 256MB DDR2, 256MB flash memory
Maintenance	Firmware update via HTTP Firmware available at web site
Network interface	10Mbps / 100Mbps Base-T, RJ-45
PC requirement	OS : Windows 2000, Windows XP, Windows Vista, Windows 7, Windows 8 Browser : Windows Internet Explorer 6.0 or above CPU : Intel Pentium 4 1.8GHz or above RAM : 1GB or above, Independent Display Card
Network protocols	IP, TCP, UDP, HTTP, SMTP, NTP, DDNS, UPnP, FTP, ARP, DHCP, PPPoE, DNS, RTSP, RTCP, Telnet, ICMP, IGMP, ONVIF Profile S, SNMP, SIP, Bonjour
Mobile phone	iPhone, iPad, and Android support
System integration	ONVIF & LILIN HTTP API
Central management system	CMX 3.6 / NAV 1.0 support
Video display	LILIN Universal ActiveX & LILIN Java Applet
OS	Embedded Linux 2.6.32
Two-way audio	G.711 / PCM
SD card recording	Support Micro SD/SDHC card for circular recording (card is not included)
Alarm input / output	Digital 1 input (TTL, +3 – 5VDC) / 1 Output (MOS Relay contact N.O., Load max. 40VDC/300mA)