

# 32CH Standalone Network Video Recorder -

Reliable Network Video Recorder for Small Multi-sites Applications

Ver 1.0.0

DATASHEET



- Manage up to 32 Network Cameras
- Recording up to 960fps @ 1280x1024
- Backup database through USB
- Export Playback Videos to AVI
- Web-based E-map Event Alert
- Two-way Audio
- Supports E-SATA
- VGA local display
- Mobile Devices Remote Monitoring
- 4 bay, supports RAID 0, 1, 5, 10

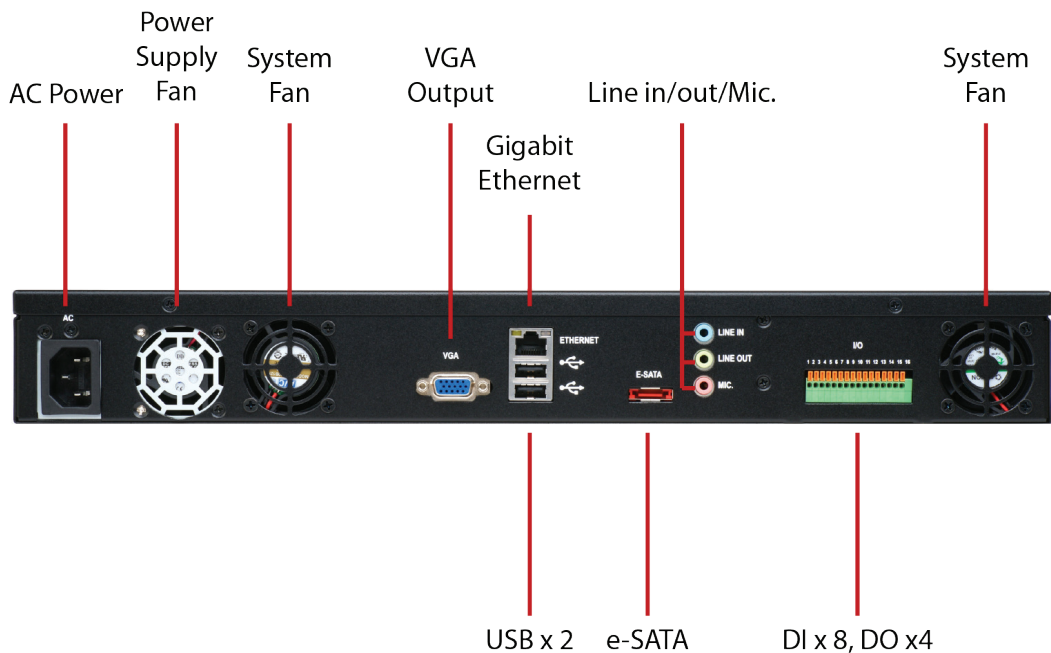
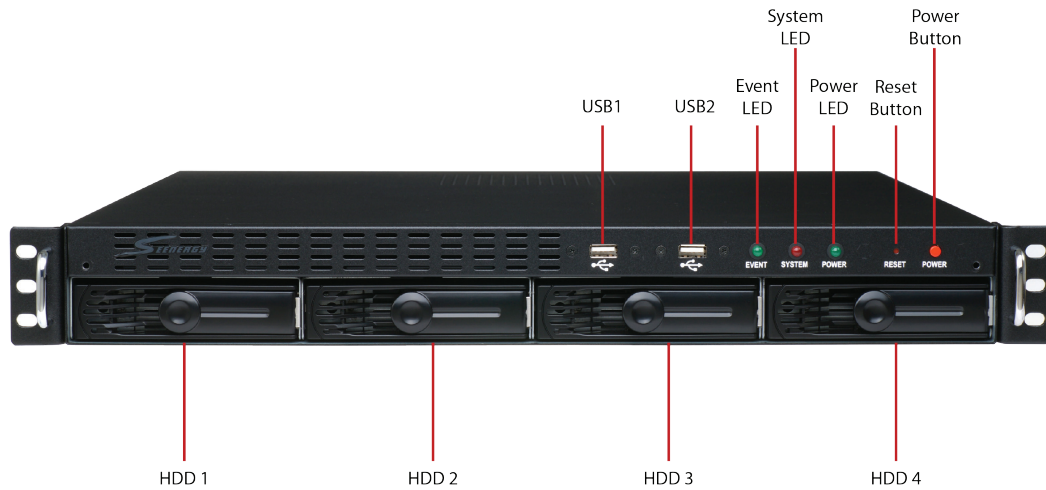
256CH CMS  
FREE Bundled!!

The NVR is designed for use within a surveillance system, and performs recordings and playbacks pictures from network cameras in the system. It is an 32-channel network video recorder (NVR) for enterprise applications. It provides uninterrupted recording also in full frame rate 1.3Mp resolution for up to 32 connected cameras. Up to 32 cameras can be connected via a network and it is possible to record their camera pictures. It is possible to perform the settings or operate the NVR using a web browser installed on a PC connected to a network and live videos can be viewed on major mobile devices through its web browser. Recorded video can be played back from remote site by a PC. SVR-632U is compatible with most major brand cameras and its ability to automatically search and find the available cameras on the network can greatly reduce the user's effort when configuring the system.

Preliminary

## Hardware Specifications

<b>CPU &amp; Memory</b>	<ul style="list-style-type: none"> <li>• ATOM D525/2GB DDR2 RAM</li> </ul>	<b>Power</b>	<ul style="list-style-type: none"> <li>• 200W ATX power supply, 100-240V</li> </ul>
<b>Ethernet</b>	<ul style="list-style-type: none"> <li>• 10BaseT / 100BaseT/1GBaseT and half duplex / full duplex auto-negotiation duplex auto-negotiation</li> </ul>	<b>Dimensions</b>	<ul style="list-style-type: none"> <li>• 462 x 430 x 54 mm</li> </ul>
<b>HDD</b>	<ul style="list-style-type: none"> <li>• SATA HDD Slot x 4 (SATA I or SATA II)</li> <li>• Max. Capacity: 3TB per HDD</li> <li>• E-SATA x 1 (Max. 8TB, 2TB x 4 HDDs)</li> </ul>	<b>Weight</b>	<ul style="list-style-type: none"> <li>• 7kg</li> </ul>
<b>LED</b>	<ul style="list-style-type: none"> <li>• Power/System/Event</li> </ul>	<b>Temperature</b>	<ul style="list-style-type: none"> <li>• Operating: 0 to 45°C, 0 to 80% non-condensing</li> <li>• Storage: -20 to 60°C</li> </ul>
<b>Buttons</b>	<ul style="list-style-type: none"> <li>• Reset/Power</li> </ul>	<b>Humidity</b>	<ul style="list-style-type: none"> <li>• 0% ~ 80% (non condensing)</li> </ul>
<b>Connectors</b>	<ul style="list-style-type: none"> <li>• USB x 4</li> <li>• E-SATA x 1</li> <li>• Audio line-in, line-out, mic.</li> </ul>	<b>Safety</b>	<ul style="list-style-type: none"> <li>• FCC Class A/CE/UL (power supply only)/BSMI</li> </ul>



## Software Specifications (Web)

### Cameras

<b>Add Camera</b>	Manual/Smart Camera Search
<b>Max. Channels</b>	32

### Video

<b>Compression</b>	MJPEG/MPEG-4 Part 2/H.264
<b>Resolution</b>	5 MP/HD/MegaPixel/FD1/CIF/QCIF
<b>Max. Frame Rate</b>	960fps (1.3 MegaPixel, H.264)

### Audio

<b>Streaming</b>	Two-way audio
------------------	---------------

### Live View

<b>Display Mode</b>	Live View/Playback/Full Screen
<b>Split Screen</b>	1/4/16/36 (web), 1/4/6/9/13/16/36 (local UI)
<b>Full Screen</b>	1/4/16/36 (web), 1/4/6/9/13/16/36 (local UI)
<b>PTZ Support</b>	Virtual PTZ Panel/Auto Pan/Preset Point/Preset Sequence/Digital PTZ
<b>Sequence Mode</b>	Sequence All/Manually Selected cameras in 1/4/16 split view with configurable timer
<b>Snapshot</b>	Video snapshot in JPEG format
<b>E-Map</b>	Motion Detected Event Display on E-Map/Google Map (Web only)
<b>Mobile Device</b>	Live image view through mobile device's web browser on iPhone/Blackberry/Android, and "NVR Viewer iPhone app

### Playback

<b>Split Screen</b>	1/4/16
<b>Search Method</b>	Time/Date, Event
<b>Playback Controls</b>	Play/Pause/Stop/Forward/Reverse/Speed Adjust/Frame by Frame
<b>Export AVI</b>	Export Playback Videos to Local Computer in AVI Format

### Recording

<b>Capacity</b>	Depends on hard disk
<b>Recording Mode</b>	Manual/Continuous/Scheduling/Event
<b>Scheduling Types</b>	Manual Select/Profile-based/Weekly Mode

### Network

<b>Protocols</b>	HTTP/SMTP/DHCP/ARP/NTP/DNS/UPnP/FTP
<b>Streaming Protocols</b>	Depend on the supported cameras

### User Management

<b>Management</b>	User/Group
<b>Number of Groups</b>	7 (Administrator/Guest/User Define * 5)
<b>Privileges</b>	Live View/Playback/System Configurations/Camera Configurations/Recording Configuration/Event Configuration/PTZ/System Options

### Triggers & Events

<b>Events</b>	System Events -- System Start, System Settings modified, Camera Settings Modified, Start Recycle, Disk Fail Camera Events -- Motion/Sensor Detection
<b>Event Actions</b>	Mail/FTP/Buzzer/Record
<b>Event Recording</b>	Pre/Post Event Settings

### Central Management

<b>Central Management</b>	Support SEEnergy 256CH "π-Vu Central Basic" Central Management Software (CMS)
---------------------------	---

### Power & Storage

<b>UPS</b>	Support External UPS System
<b>Storage</b>	Support SATA x 4, Max. 3TB per drive, ESATA x 1, max. 8TB

<b>Log Types</b>	Service/Camera PTZ/Recording/Camera connection/Backup/Restore
------------------	---

### Systems

<b>Mini. Hardware Requirements</b>	CPU: Intel Core 2 Duo @ 2.4 Ghz or higher RAM: 1GB or above Network: 100 Megabit Network Interface or above
<b>Mini. Software Requirements</b>	IE Browser version 7 or above

### General

<b>Languages</b>	(Web UI) English/Trad. Chinese/Simp. Chinese/Japanese/Spanish/Italian/German/Danish/Czech/Polish/French/Russian/Slovensky/Hungarian/Portuguese/Dutch/Turkey/Finnish  (Local UI) English
<b>Packaging</b>	SVR-632U NVR (HDD NOT included)/CD with Software tool/Datasheet/Quick Guide/User's Manual/Warranty Card/Power cord

## Software Specifications (Local Display)

### Live View

- Display Mode** Live View/Playback/Full Screen
- Split Screen** 1/4/6/9/13/16/36
- Full Screen** 1/4/6/9/13/16/36
- PTZ Support** Virtual PTZ Panel/Auto Pan/Preset Point/Preset Sequence/Digital PTZ
- Sequence Mode** Sequence All/Manually Selected cameras in 1/4 split view with configurable timer
- Snapshot** Video snapshot in JPEG format
- E-Map** Motion Detected Event Display on E-Map



### Playback

- Split Screen** 1/4
- Search Method** Time/Date, Event
- Event Search** All/Time/Channel/Event Type/Event ID
- Playback Controls** Play/Pause/Stop/Forward/Reverse/Speed Adjust/Frame by Frame
- Other Functions** Digital PTZ/Screenshot

### E-Map Monitor

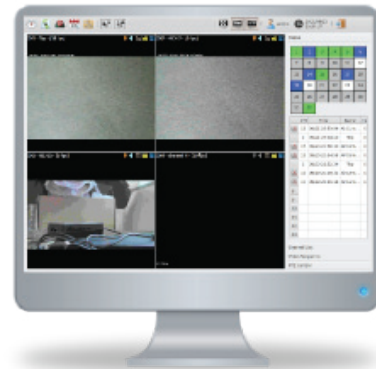
- Display** PIP Video integrated on E-Map
- Event Display** Pop-up video display on the map
- Management** Multi-layer with group management

### Event Monitor

- Live** Instant event display with thumbnail view
- History** Search history event recordings with thumbnail view

### Input Devices

- Supported input devices** USB mouse/keyboard



## Application Diagram

### 256 CH CMS Software π-Vu Central Basic

