

Full Gigabit Managed PoE Switch

Layer 2 Switch

Real-time Transmission / Security and Stability / Easy Management

UTP7524GE-POE-A1 Full Gigabit Managed PoE Switch



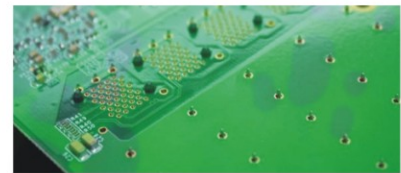
1 Industrial Chip Superior Performance

Industrial-level chip, exchange capacity up to 56 Gbps.



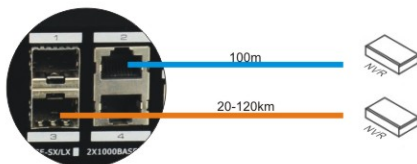
2 High-performance PCB Delicate Design

Adopt gold-plated PCB ,prolong service life, improve product stability and save maintenance costs.



3 Dual Gigabit Uplink Ports Fiber and Ethernet

2 x Gigabit Ethernet ports, convenient for local video surveillance and data backup storage;
2 x Gigabit Fiber ports, convenient for remote



4 6KV Lightning Protection Locking Designing

6KV Lightning Protection standard, protect from 6KV ESD caused by contact and 8KV by air; Superior performance and stability.



5 Layer 2 Management Real-time Surveillance

Powerful layer 2 Web management function, complies with IEEE802.1Q, etc.
Simple management interface, display switch instructions and operation status.

