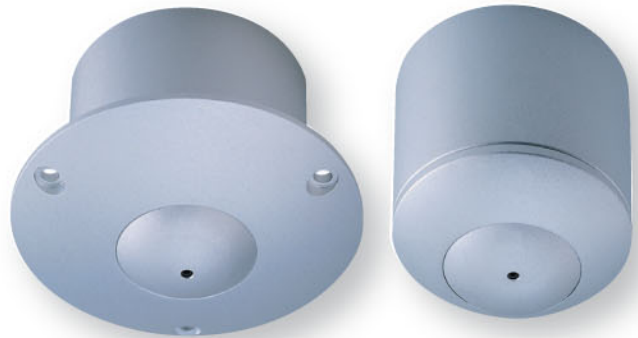


Mini Dome Camera

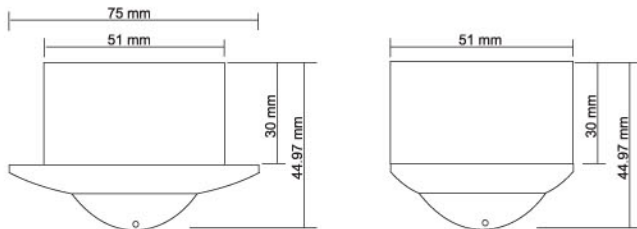
Features :

- Sony Super HAD CCD sensor
- Built-in Cone Lens 3.7 mm
- In-ceiling or Surface installation application
- Aluminum casing



● In - Ceiling

● Surface



Model No.	YK-2C54	YK-3C76
Image Device	1/3" Sony Super HAD	1/3" B/W Sony Super HAD
Picture Elements	NTSC:510x492, PAL:500x582	EIA:510x492, CCIR:500x582
Resolution	380 TVL	420 TVL
Min. Illumination	0.4 Lux @ F 2.0	0.1 Lux / F 2.0
S/N Ratio	More than 48 dB	
Electronic Shutter	NTSC:1/60~1/100,000, PAL:1/50~1/110,000	EIA:1/60~1/100,000, CCIR:1/50~1/110,000
Gamma	0.45	
Lens Mount	Cone Lens 3.7mm / F2.0	
White Balance	Auto	-
Gain Control	Auto	
Sync. System	Internal	
Video Output	1 Vp-p / 75 Ohms	
Power Supply	DC12V ± 10%	
Power Consumption	1.4W max.	1.3W max.
Operating Temp.	-10°C ~ 50°C	