

# DrayTek

## VIGOR560 Wireless 11g Cardbus Adapter



## User's Guide

## ***Table of Contents:***

<b>Chapter 1: Introduction .....</b>	<b>2</b>
1.1: Package Contents	
1.2: System Requirements	
1.3: LEDs	
<b>Chapter 2: Installation .....</b>	<b>4</b>
2.1: Install the DrayTek VIGOR560 Wireless 11g Cardbus Adapter Driver and Utility Software	
2.2: Install the VIGOR560 Wireless 11g Cardbus Adapter	
2.3: Your Installation is complete!	
<b>Chapter 3: Getting Started .....</b>	<b>12</b>
<b>Appendix I: Utility Configuration .....</b>	<b>14</b>
<b>Appendix II: Specification .....</b>	<b>17</b>

## ***Chapter 1: Introduction***

Congratulations on your purchase of DrayTek VIGOR560 Wireless 11g Cardbus Adapter. Vigor560 Wireless 11g Cardbus Adapter provides data transfers at up to 54 Mbps when your notebook communicates with an access point or other wireless-equipped notebooks. In additions to offering faster data transfer speeds when used with other wireless products, VIGOR560 Wireless 11g Cardbus Adapter also provided enhanced security to protect your privacy. It supports not only Wired Equivalent Privacy (WEP), but also most advanced security feature - WiFi Protected Access (WPA). The VIGOR560 Wireless 11g Cardbus Adapter is also fully compatible with 802.11b standard, so it can connects with all your existing 802.11b compliant devices.

### **1.1 Package Contents**

The product package should contain:

- VIGOR560 Wireless 11g Cardbus Adapter
- VIGOR560 Autorun CD
- Quick Start Guide

### **1.2 System Requirements**

Before installing VIGOR560 Wireless 11g Cardbus Adapter, please make sure that your computer system has the followings:

- A computer with a 32-bit Cardbus slot.
- OS: Windows 98/ME/2000/XP
- CD-ROM drive to process installation

### 1.3 LEDs

The LEDs are indicators of device activity and performance.  
Table 1 shows the description of the LEDs.

LED	Status	Description
Link	Green, On Off	WLAN On No Connection
Activity	Amber, Blinking	Transmitting data

Table1. LED indicators

## Chapter 2: Introduction

Follow the quick steps to install your PC card.

**⚠ Important:** We strongly recommend install the software first before you plug the card into your computer.

---

### 2.1 Install the DrayTek VIGOR560 Wireless 11g Cardbus Adapter Driver and Utility Software

- Turn on your computer.
- Insert the CD into your CD-ROM drive.
- The Autorun Wizard screen will appear, as shown as **image 1.1**.



image 1.1

- d. Click the "**Install VIGOR560 Driver**" button.
- e. If the CD Autorun function does not appear, go to your Windows Start menu and choose "**Run**", type "D":\Setup.Exe" ("D" represents your computer CD-ROM driver letter), and click "OK". (as **image 1.2**)

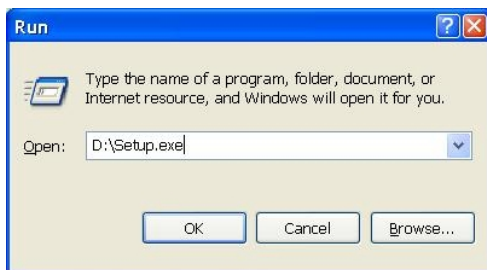


image 1.2

f. The Install Shield wizard will appear. (as **image 1.3**)

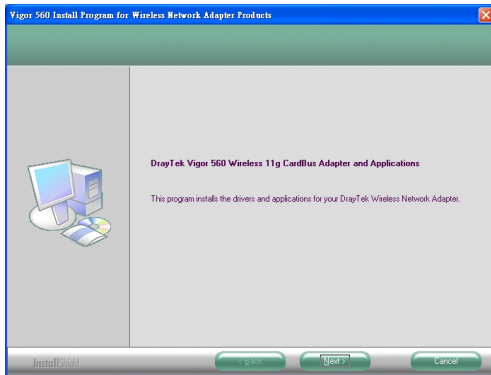


image 1.3

g. Click "Install" to begin the Installation.(as **image 1.4**)

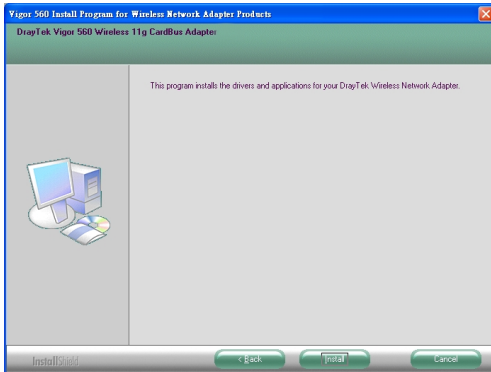
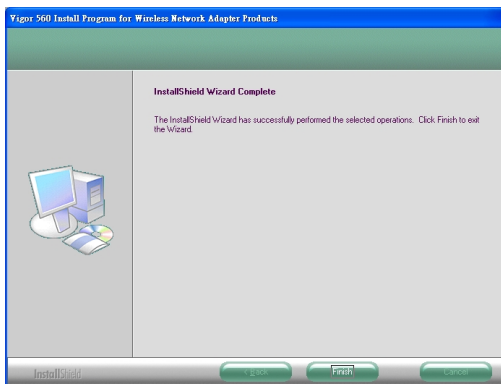


image 1.4

h. Click "Finish" to finish the installing the Driver & Utility.





## **2.2 Install the VIGOR560 Wireless 11g Cardbus Adapter**

- a. Insert the VIGOR560 Wireless 11g Cardbus Adapter into available Cardbus slot on your computer as shown here.  
(**Image2.1**)



image2.1-1



image2.1-2

- b. **Found New Hardware** dialog box will appear.

- c. Select "Install the software automatically (Recommended)", and then click "Next".(image2.2)



Image2.2

- d. Click "Continue anyway" to finish the installation.(image2.3)



Image2.3

e. Click "Finish" to finalize the installation.(**image2.4**)

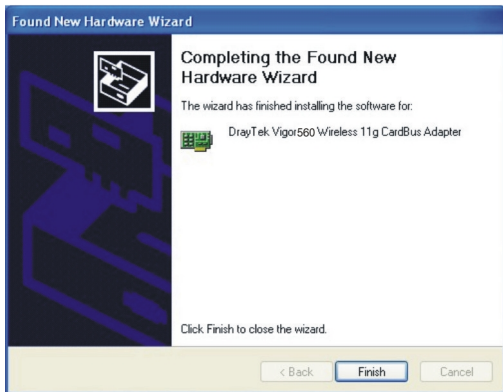


Image2.4

## **2.3 Your Installation is complete!**

After finish installation, DrayTek VIGOR560 Wireless 11g Cardbus Adapter Configuration Utility will start and the utility icon will appear in the bottom right hand corner of desktop screen. If this icon appears green, then you have finished the VIGOR560 Wireless 11g Cardbus Adapter installation and connect to a wireless network device.

## Chapter 3: Getting Started

There are basically two modes of wireless networking.

- Infrastructure: Using VIGOR560 Wireless 11g Cardbus Adapter to associate with Access Point and Wireless Router
- Ad-Hoc: Using VIGOR560 Wireless 11g Cardbus Adapter to connect directly with another computer, for peer-to-peer communication

### Using Configuration Utility:

Windows XP has a built-in configuration tool. Use Windows XP Wireless Zero Configuration (located in the system tray at the bottom of your screen) to configure the Notebook Adapter.

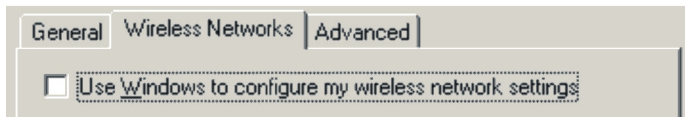


If you wish to change default setting or optimize the performance of VIGOR560 Wireless 11g Cardbus Adapter, DrayTek have provided a configuration utility for this purpose.



If you want to enable DrayTek WLAN utility under Windows XP, please follow the step below listed below.

1. Double click on your Windows XP Wireless Zero Configuration icon.
2. Click on "**Advanced**" button.
3. **Uncheck** the option "**Use Windows to configure my wireless network settings**".



4. Click "**OK**" to save your settings.

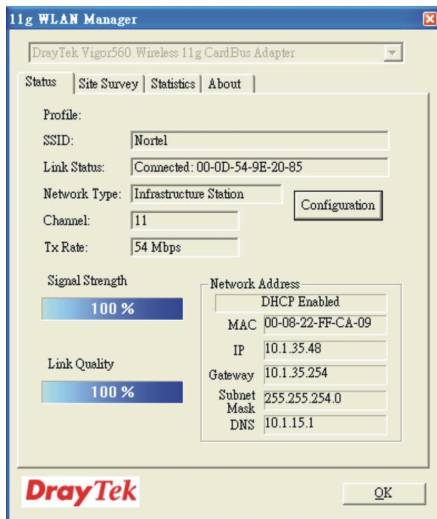
You can also double-click the DrayTek VIGOR560 system icon which appears on your desktop to start the utility.



## Appendix I:

### Utility Configuration

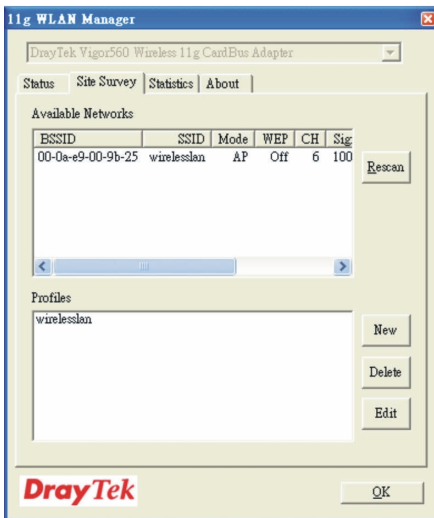
#### 1. Status:



- Profile: Settings for current using
- SSID: The Service Set Identifier is the name assigned to the wireless network.
- Link Status: Connecting status with existing Wireless Router or Access Point.
- Network: Indicates between 802.11 "Infrastructure mode" or "Ad-hoc mode" currently in use.
- Channel: Indicates which channel currently in use.

- Tx Rate: Indicates the data transfer rate between node and the device to which it is communicating.
- Link Quality/Signal Strength: Indicates the signal strength of the radio frequency signal received by the wireless node.

## 2. Site Survey:



- BSSID: Indicates the MAC Address of Wireless Router or Access Point which can be connected.
- SSID: Service Set Identification is a 32 bit alphanumeric character (maximum) name assigned to the wireless network.
- Mode: Indicates AP mode or Ad-hoc mode currently in use.



- WEP: Indicates WEP (Wired Equivalent Privacy) function is "On" or "Off"
- Channel: Indicates which channel currently in use.
- Signal Strength: Indicates the wireless signal between the access point and VIGOR560 Wireless 11g Cardbus Adapter.
- Support Rates: Indicates the data rate between the wireless node and device which is connecting.

## Appendix II: Specifications

### Standards:

- IEEE 802.11b
- IEEE 802.11g

### Diagnostic LED:

- Activity
- Link

### Temperature:

- Operating: 0 to 55 C (32 to 131 F)
- Storage: -20 to 70 C (-4 to 158 F)

### Humidity:

- Operating: 5-90% (non-condensing)
- Storage: 5-95% (non-condensing)

### Internal Antenna Type:

- Diversity Printed Antenna

### Bus Interface:

- 32-bit Cardbus

### Security:

- 802.1x
- WPA WiFi Protected Access (64/128/152 bit WEP, TKIP, AES)

### Physical Dimensions:

- (Length x Width x Height): 118 x 54 x 5.7mm  
(4.66 x 2.12 x 0.222 inch)

### Weight:

- 39g (1.38oz)

### Warranty:

- 1 year