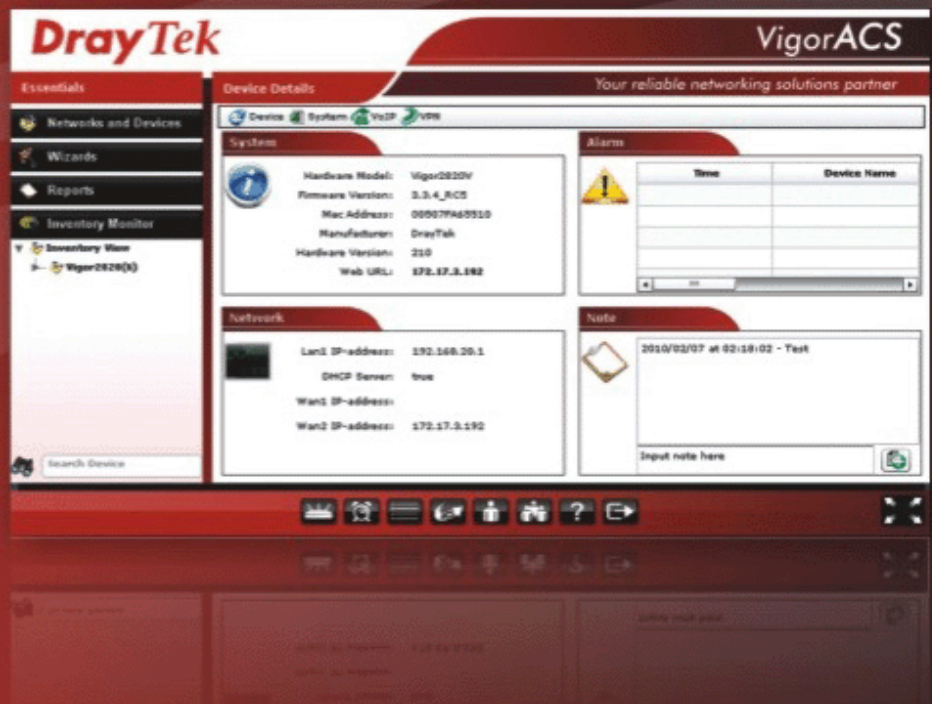


DrayTek

VigorACS SI

Centralized Management System



Quick Start Guide

V1.1

VigorACS SI

Quick Start Guide

Version: 1.1

Software Version: V1.0.2

Date: 14/06/2010

Table of Contents

1	Software Installation	7
1.1	Platform for Windows 2000, XP and Vista.....	7
1.1.1	<i>Installation for Java.....</i>	7
1.1.2	<i>Installation for MySQL.....</i>	11
1.1.3	<i>Installation for VigorACS SI.....</i>	17
1.2	Platform for Unix.....	23
2	Starting VigorACS.....	25
2.1	Overview.....	25
2.2	Platform for Windows 2000, XP and Vista.....	25
2.2.1	<i>Start MySQL Database</i>	25
2.2.2	<i>Start VigorACS.....</i>	25
2.2.3	<i>Register VigorACS.....</i>	26
2.3	Platform for Linux	31
2.3.1	<i>Start/Shutdown MySQL Database</i>	31
2.3.2	<i>Start/Shutdown VigorACS.....</i>	32
2.3.3	<i>Edit VigorACS IP</i>	32
3	Configuration on CPE Device	33
3.1	Set ACS URL on CPE	33
3.2	Invoke Remote Management for CPE.....	34
3.3	Enable WAN Connection on CPE	34
4	Application and Tutorial	37
4.1	Creating an Account for MyVigor	37
4.1.1	<i>Creating an Account via VigorACS SI.....</i>	37
4.1.2	<i>Creating an Account via MyVigor Web Site.....</i>	41
4.2	Upgrade VigorACS with New License Key	44
4.2.1	<i>License Is Invalid or Expired.....</i>	44

4.2.2 License Is Valid Still.....48

5

Troubleshooting53

1

Software Installation

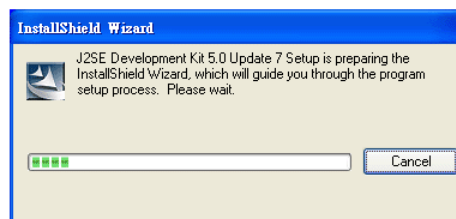
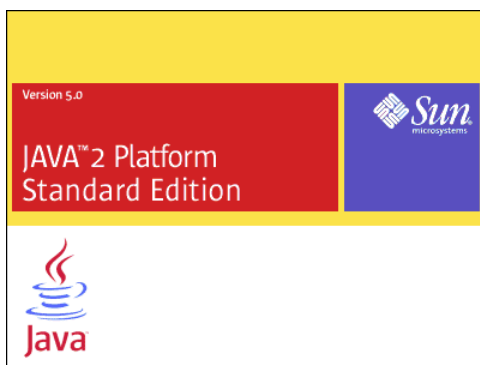
Please follow the procedure listed below to install VigorACS completely. The installation for different platforms might be different.

1.1 Platform for Windows 2000, XP and Vista

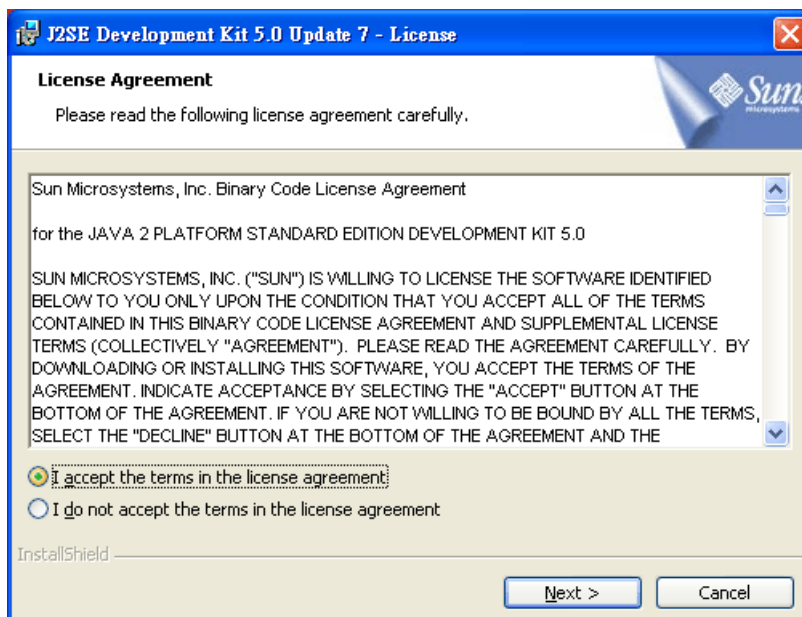
There are three programs needed to be installed for operating VigorACS.

1.1.1 Installation for Java

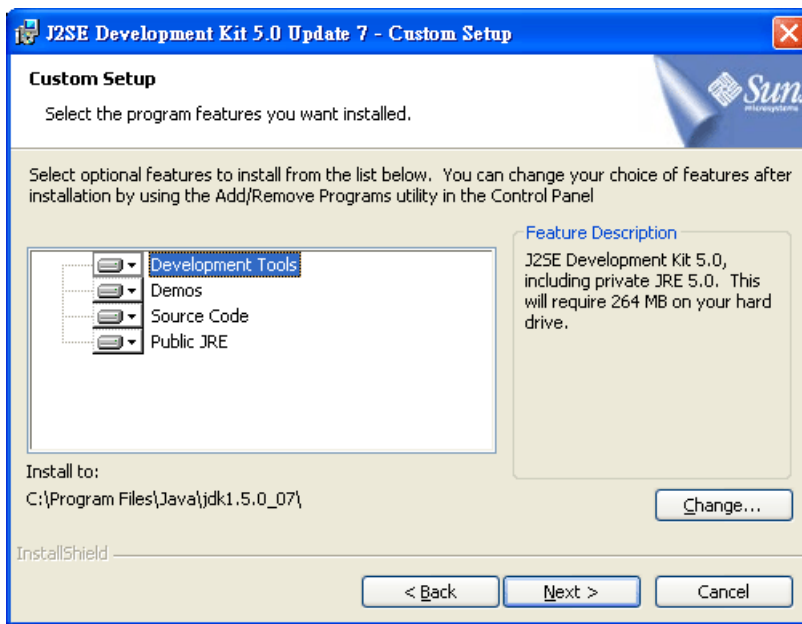
1. Locate ACS\Software\jdk-1_5_0_07-windows-i586-p.exe from CD and double click on it to execute the installation.



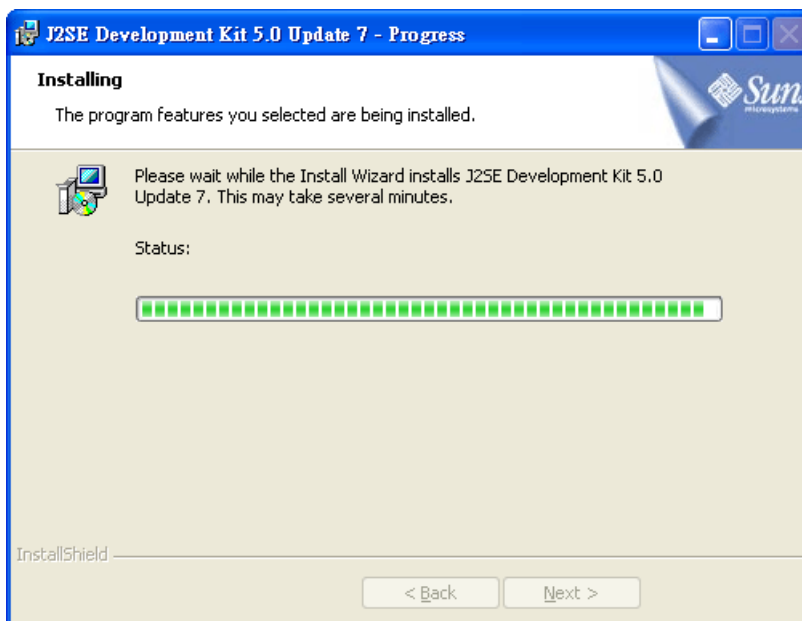
2. A license agreement dialog box will appear. Choose "I accept the ..." and click **Next**.



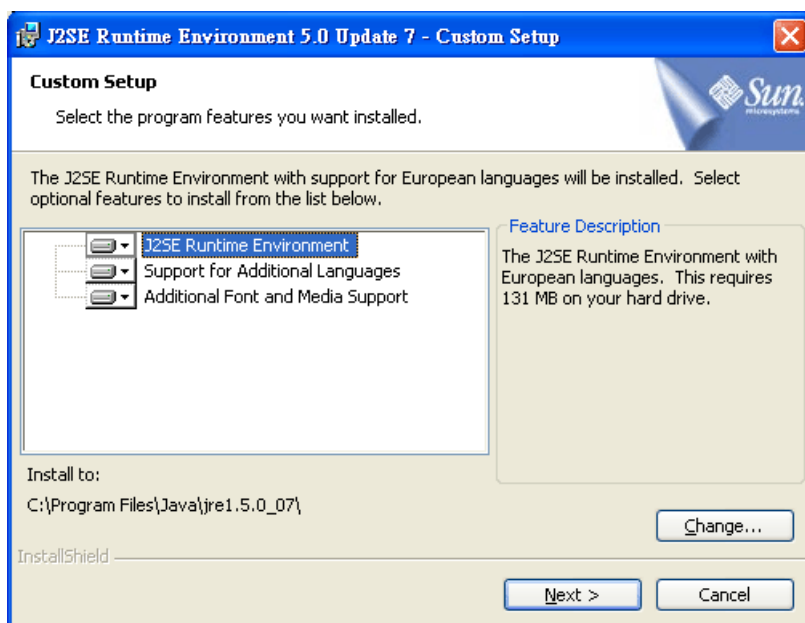
3. In this dialog box, optional features will be listed for you to choose for installation. Choose the one you need and click **Next**.



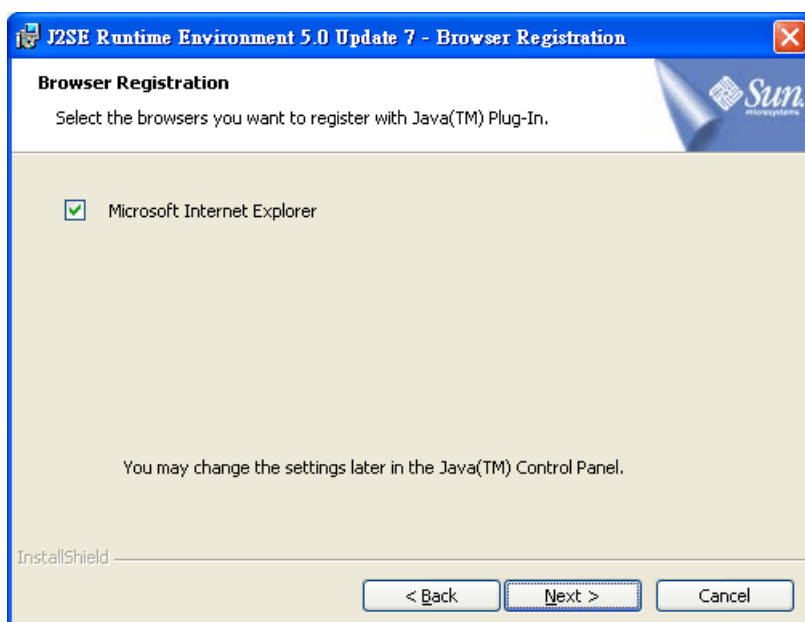
4. Wait for a while to install the selected feature.



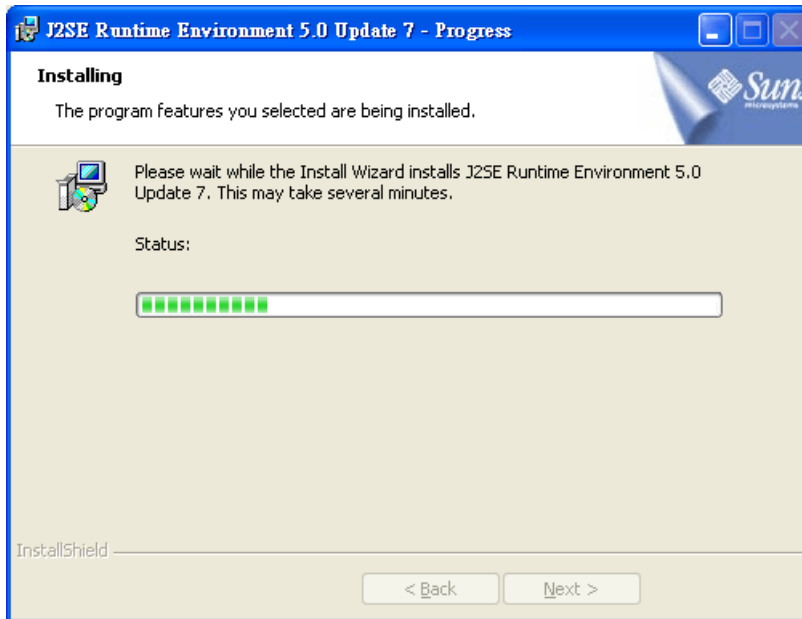
5. When this dialog box appears, please click **Next**.



6. You have to choose the browser for configuring VigorACS later, and then click **Next**.



7. Wait for a while to install the required features.



8. Now the installation is completed. Click **Finish** to exit the installing program.



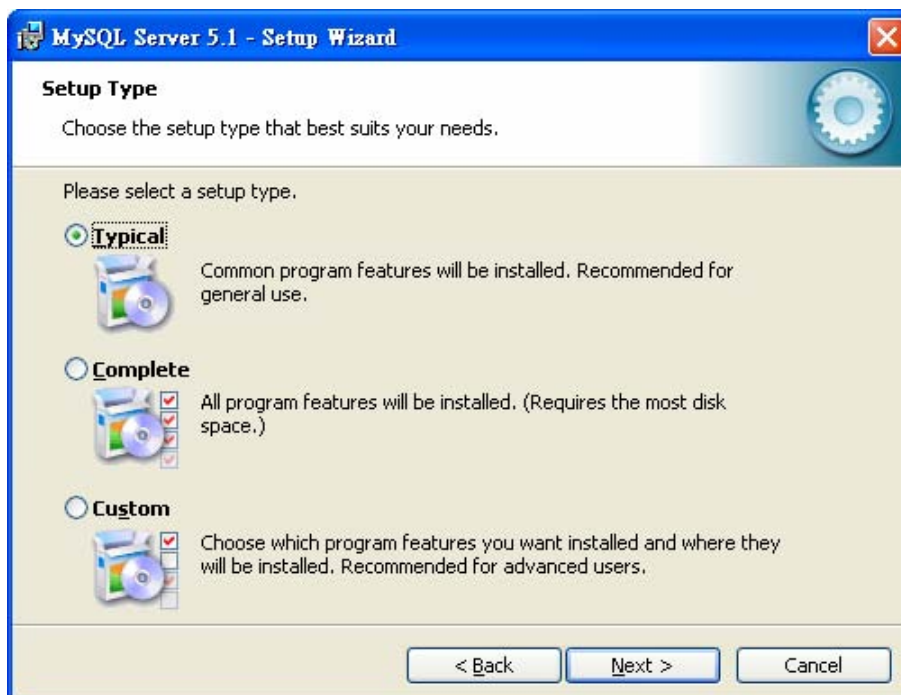
1.1.2 Installation for MySQL

Follow the steps below to install MySQL.

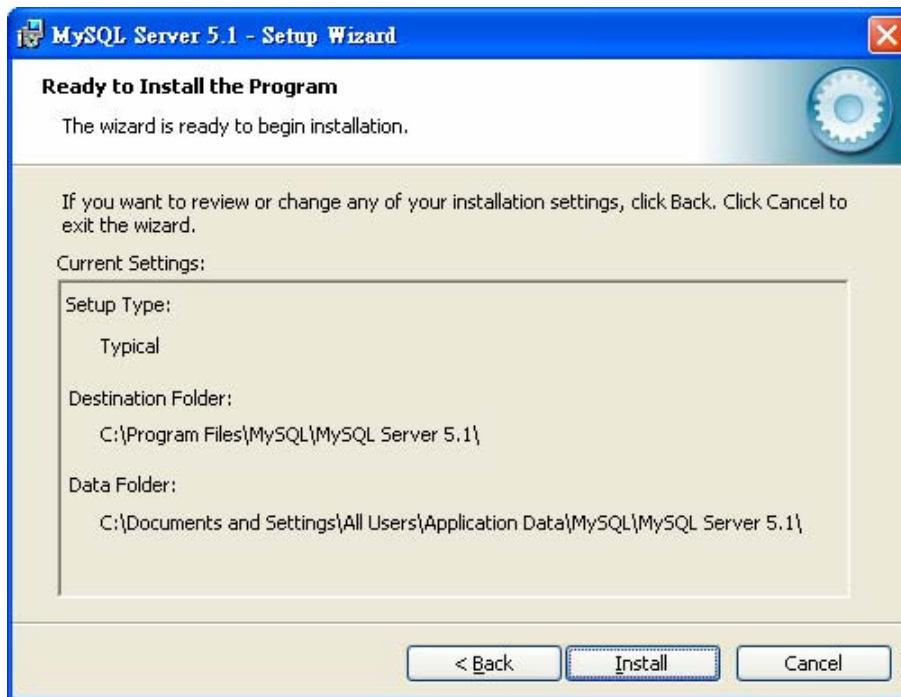
1. Locate ACS\Software\mysql-5.1.41-win32\Setup.exe from CD and double click on it to execute the installation.
2. When the welcome screen appears, please click **Next** for next step.



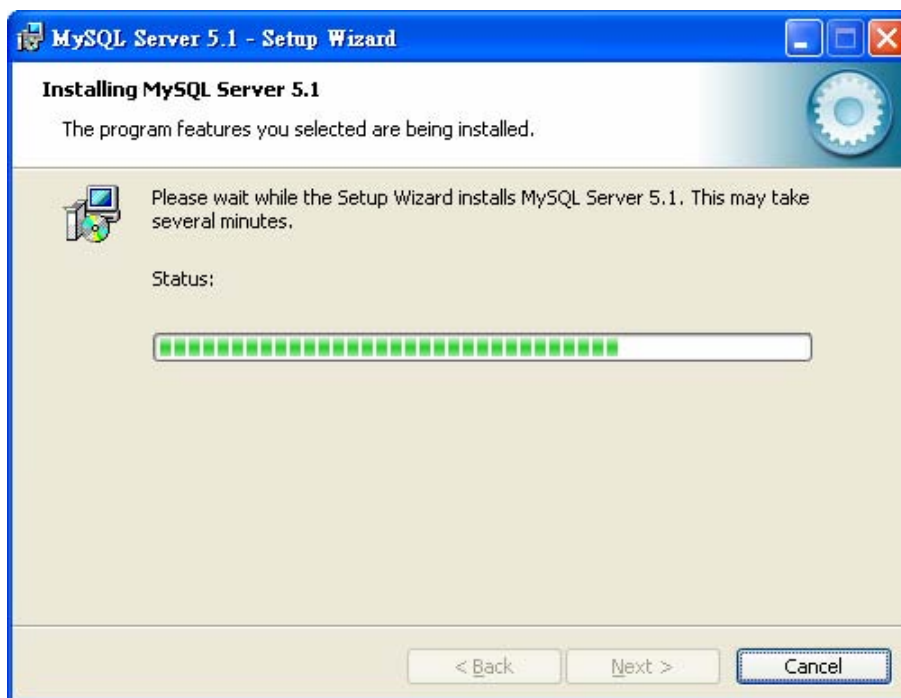
3. On this dialog box, choose the type of setup you want and click **Next**.



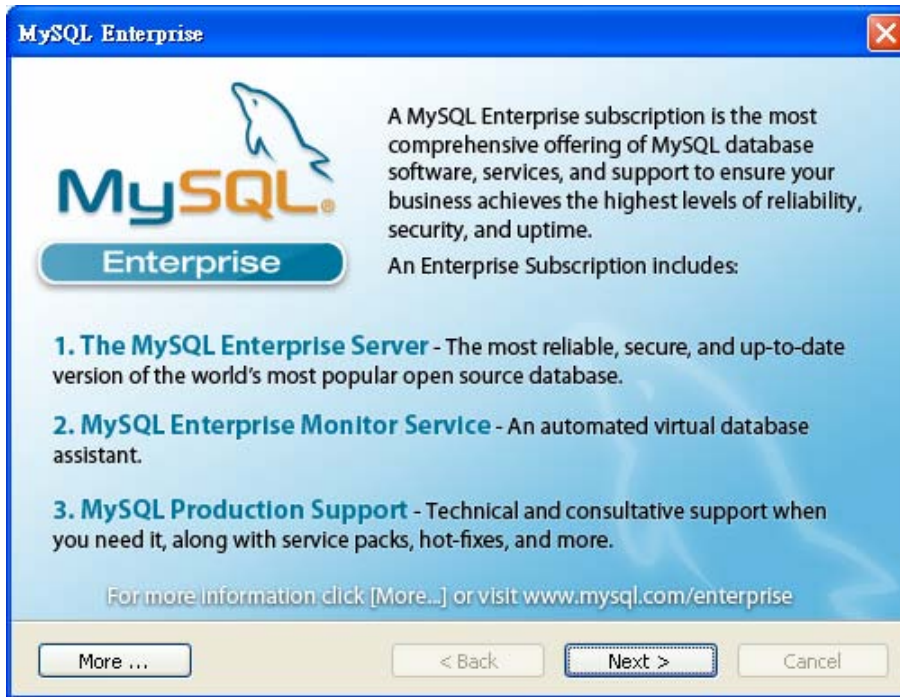
4. On this dialog box, click **Install**.



5. The installation program starts to install required files for MySQL to your computer. Wait for several seconds.



6. When the following screen appear, please click **Next**.



7. Click **Next** again.



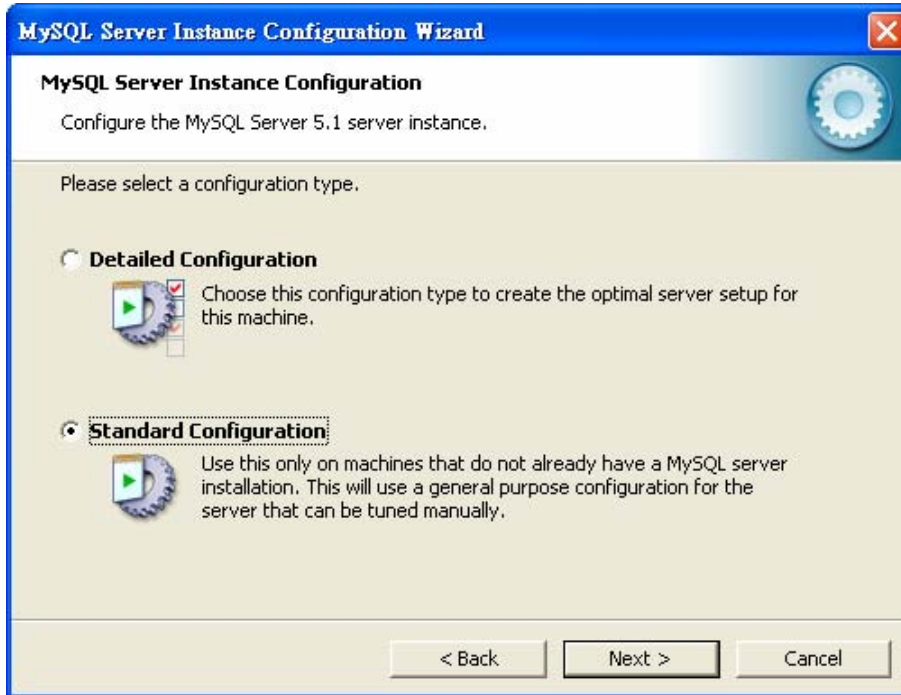
8. When the program finishes the installation, the following dialog box will appear. Please click **Finish** to exit the program.



9. When the following page appears, click **Next**.



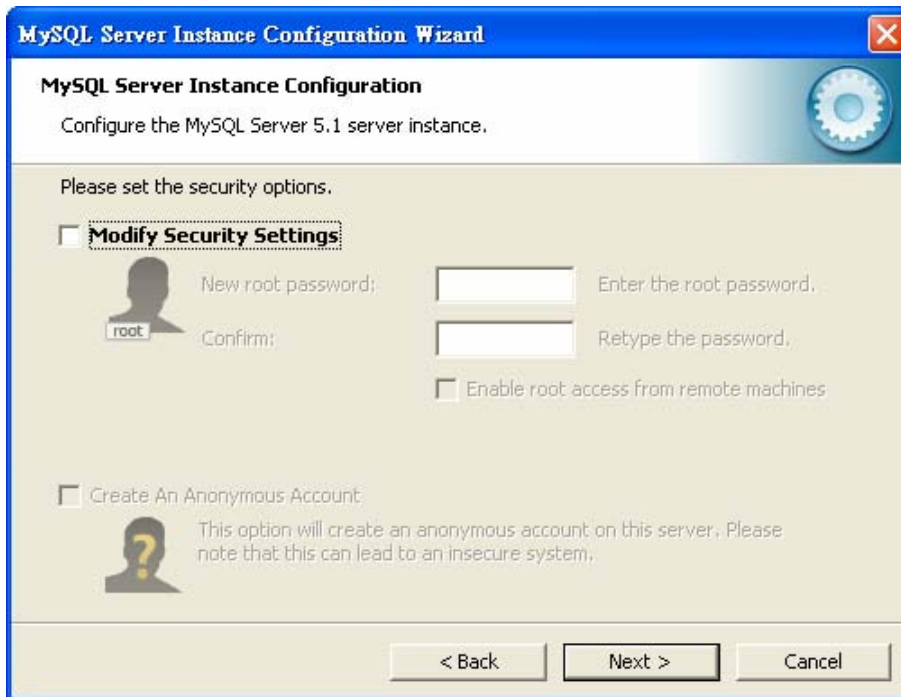
10. Choose **Standard Configuration** and click **Next**.



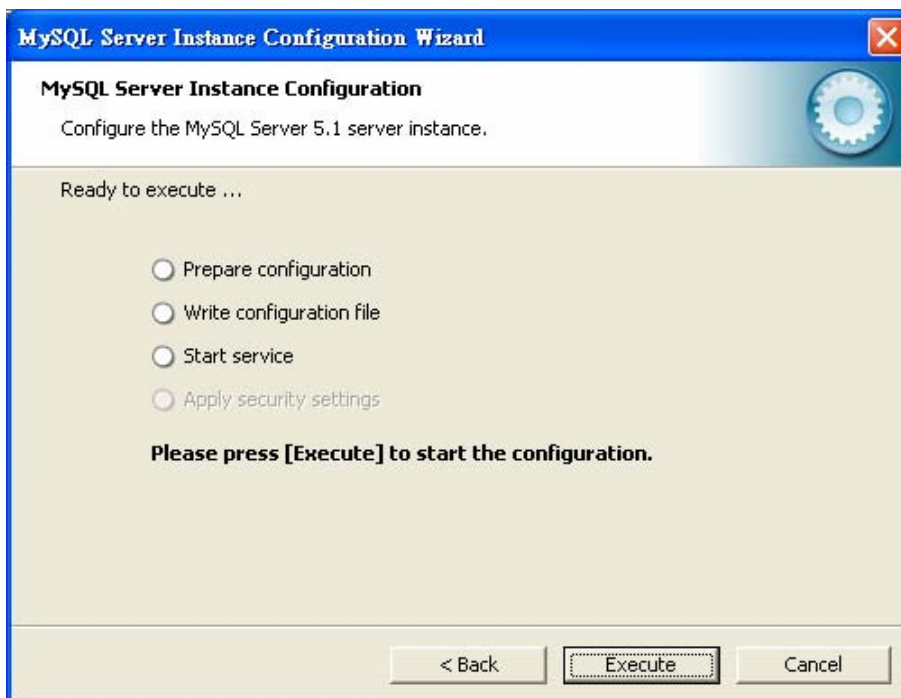
11. In this page, simply click **Next**.



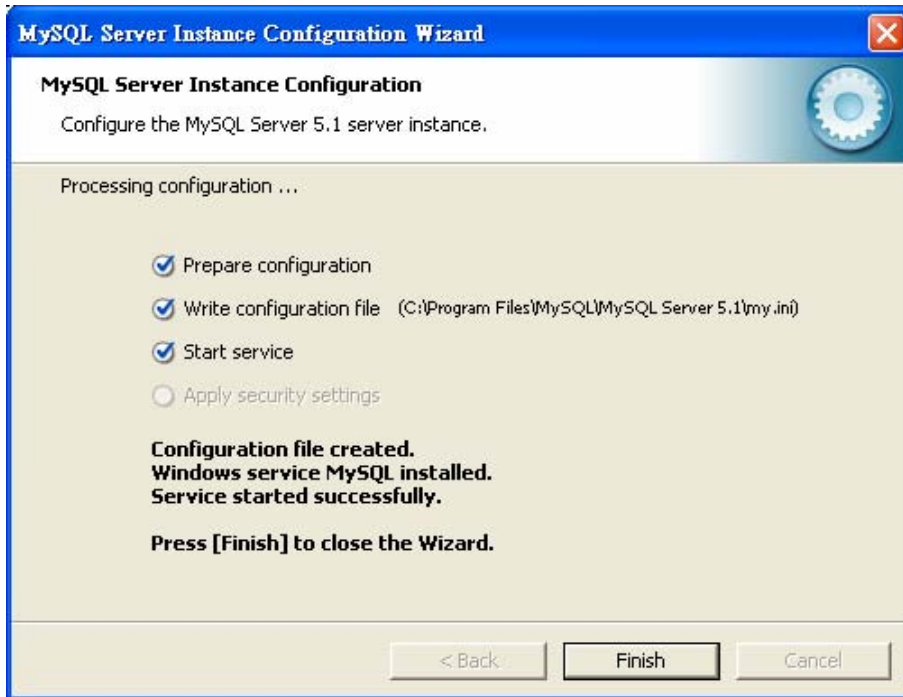
12. If you want to configure password for MySQL server, please check **Modify Security Settings** and type the password. It depends on your request. Otherwise, simply click **Next**.



13. Then, click **Execute**.



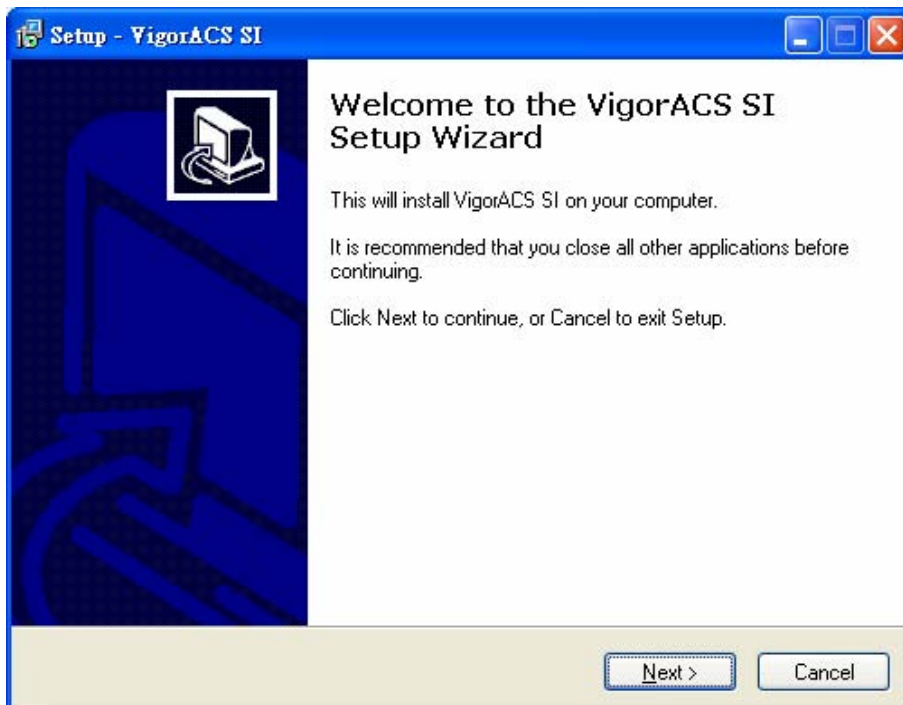
14. After finishing the configuration, please click Finish to exit the wizard.



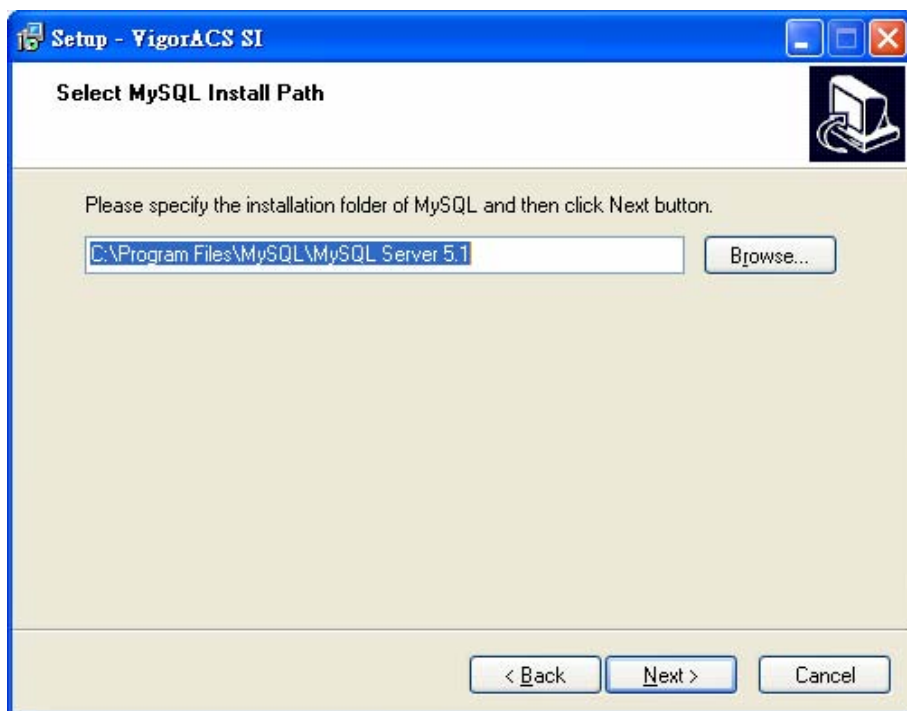
1.1.3 Installation for VigorACS SI

It is time to install VigorACS main program. Follow the steps below.

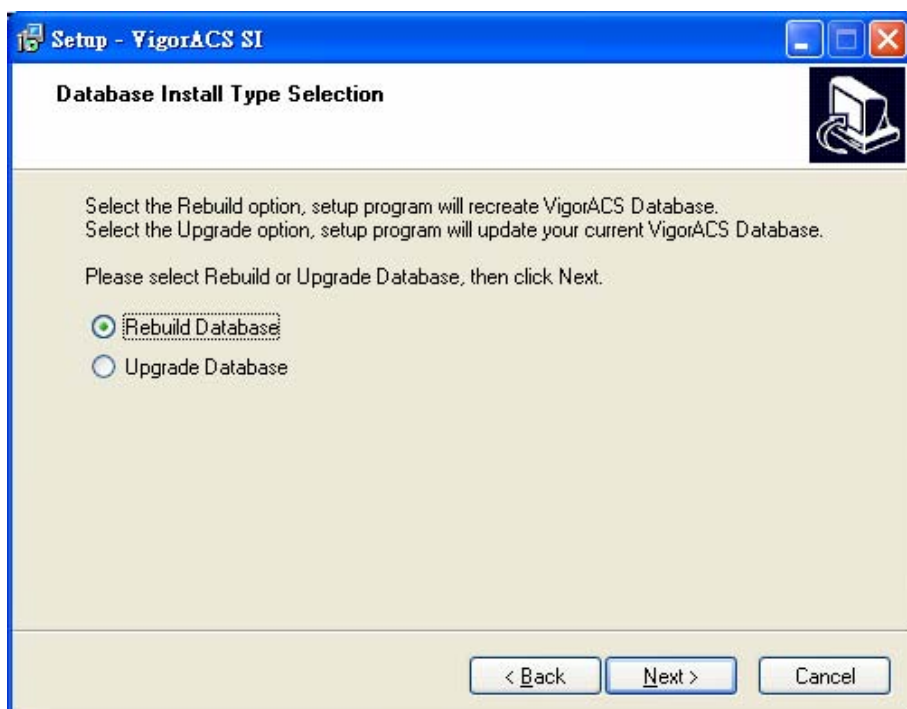
1. Locate ACS\ACS\setup.exe from CD and double click on it to execute the installation.



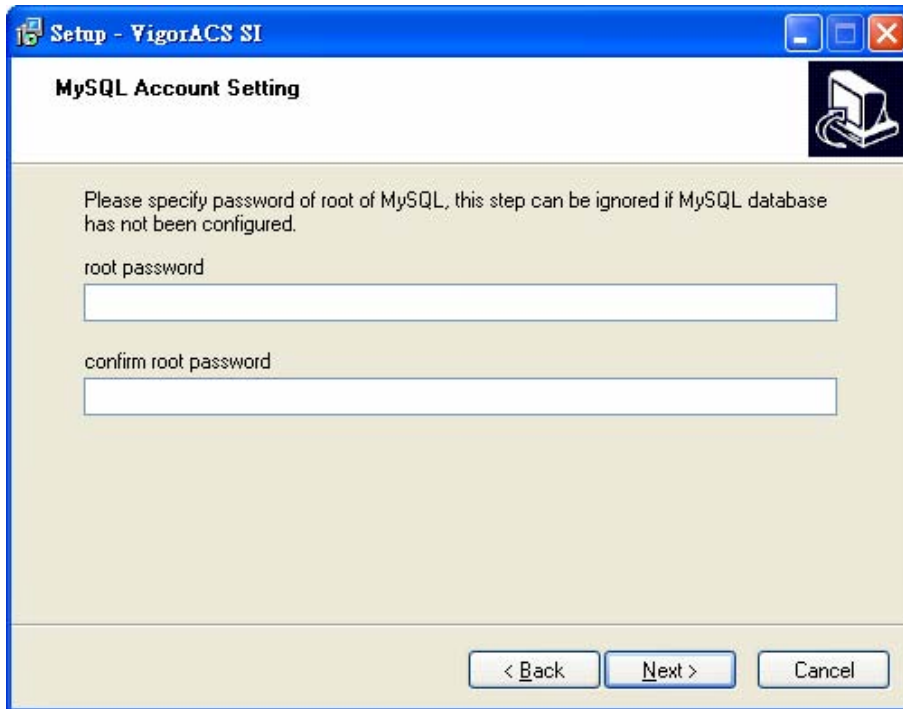
2. Select the directory that MySQL being installed (done in 1.1.2) and click **Next**.



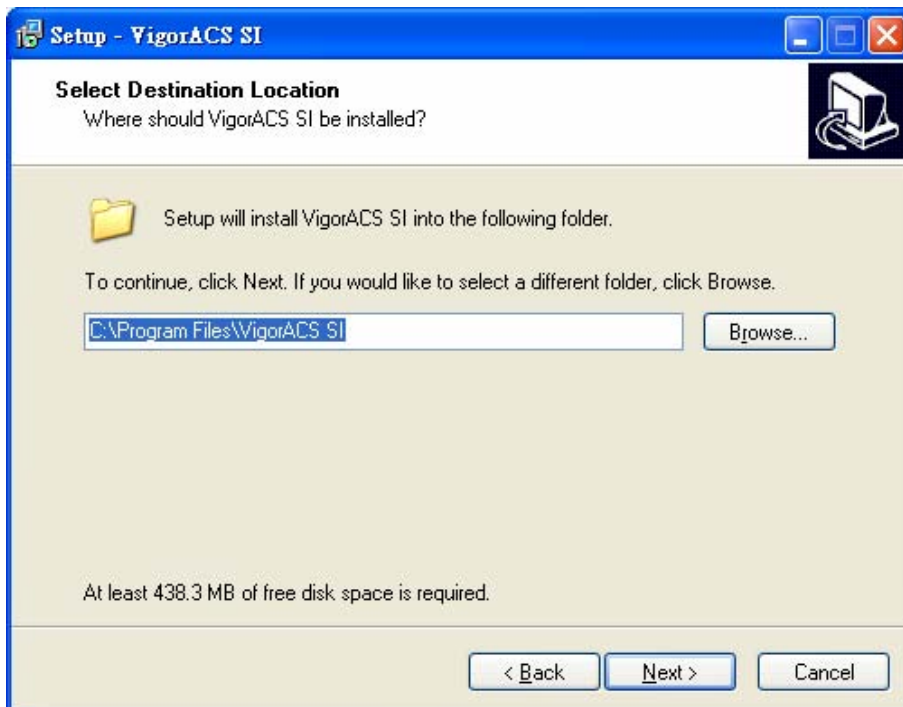
3. In this dialog box, choose **Rebuild Database** (for rebuilding the VigorACS database) or **Upgrade Database** (for upgrading the database) and click **Next**. For the first time using, please choose **Rebuild Database**.



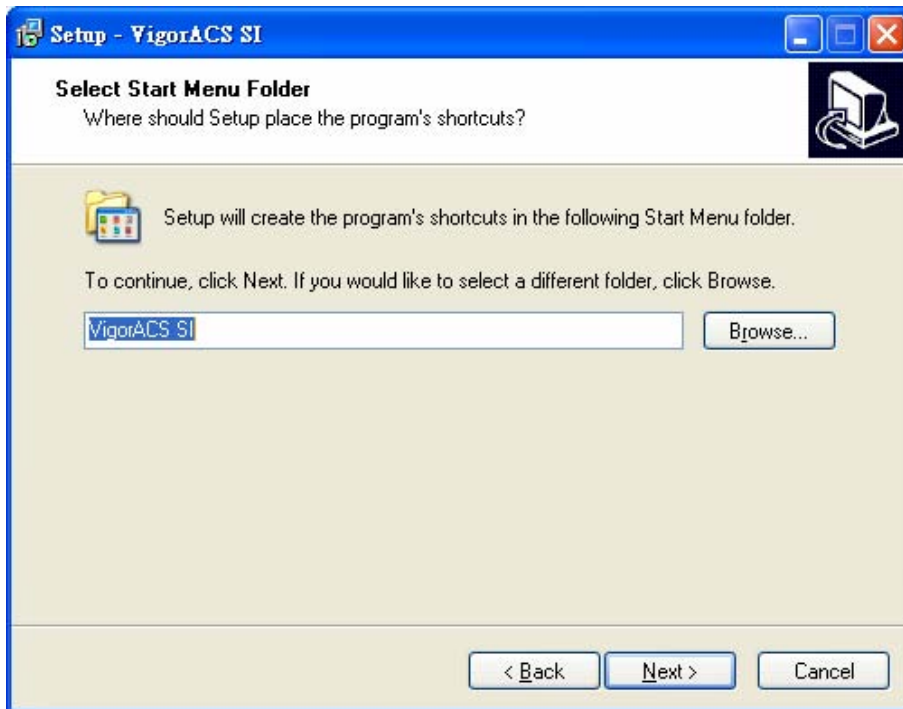
4. Click **Next**. If you have configured MySQL previously and specified password for it, you have to type the password in this page and then click **Next**.



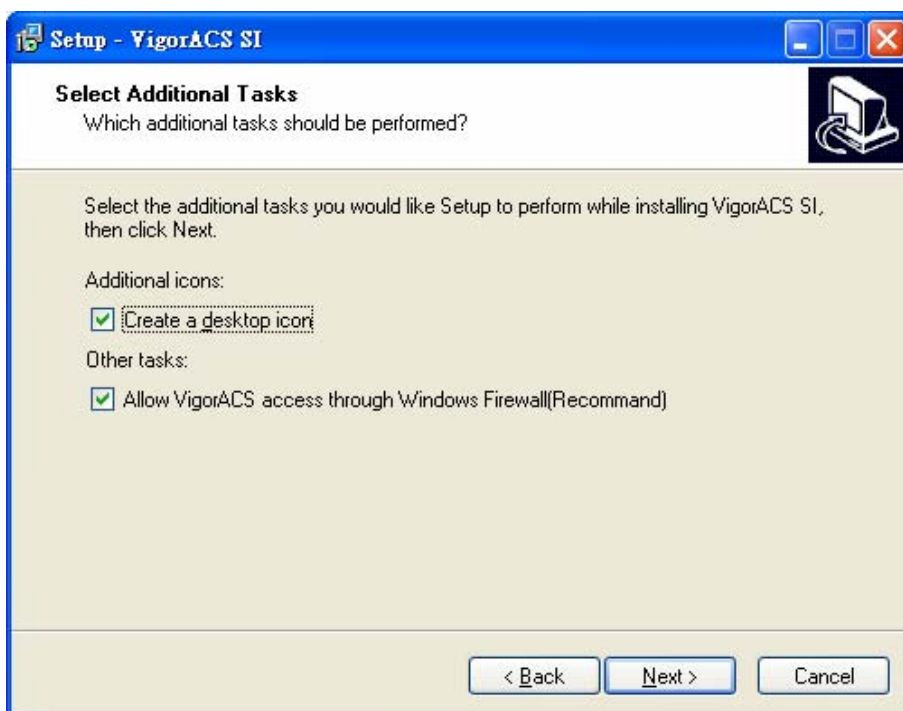
5. Determine the destination folder and click **Next**. The default directory used by this program is *c:\Program Files\VigorACS SI*. You can modify it if you want and please make sure the length of directory is not over 100 characters, otherwise you might encounter problem of VigorACS SI in installation.



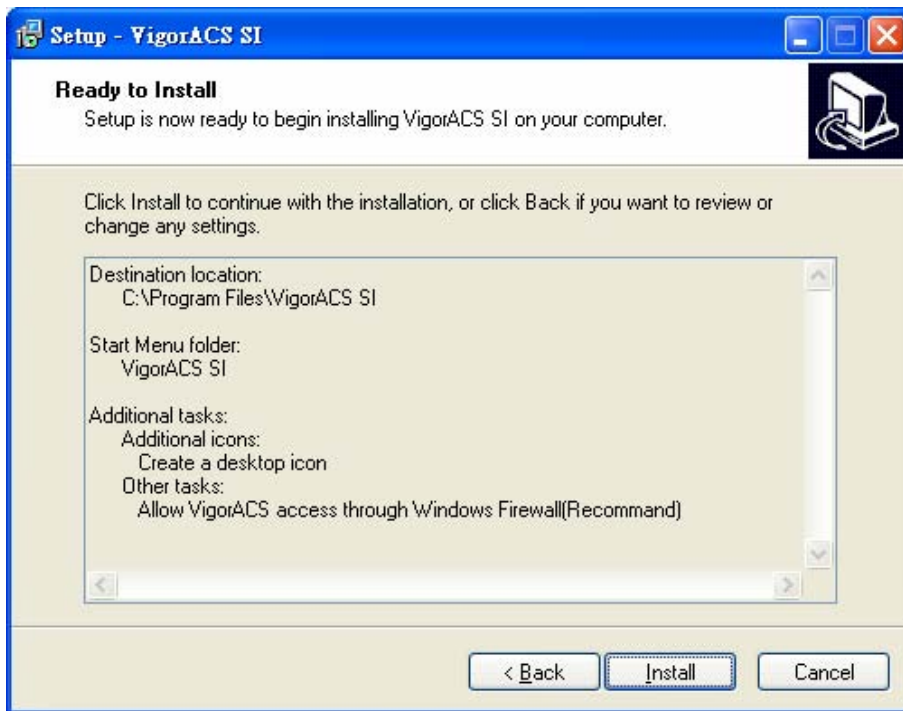
6. Determine the program name of VigorACS SI for you to start up. Then click **Next**.



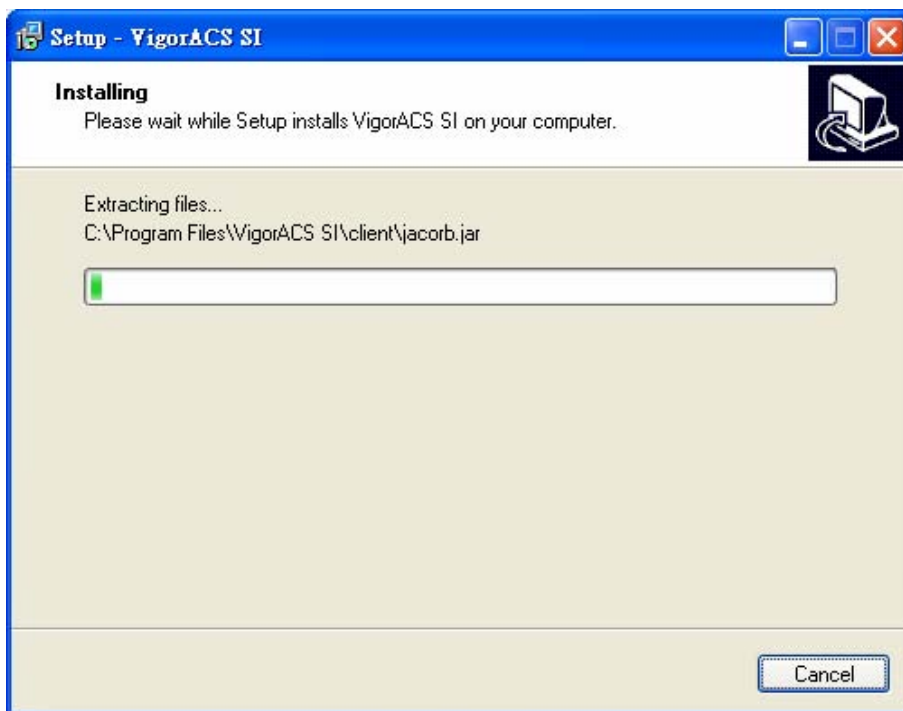
7. In this dialog, check the box of “**Create a desktop icon**” for your necessity. Click **Next**.



8. Now, the program is ready to install necessary features and files to your computer. Please click **Install** to start.



9. Please wait for a while to complete the installation.



10. While installing, the following screen will appear to show that MySQL has been activated. Please wait for next dialog appearing.

```
C:\WINNT\system32\cmd.exe
G:\Documents and Settings\Administrator>net start mysql
The MySQL service is starting.
The MySQL service was started successfully.

G:\Documents and Settings\Administrator>
```

```
C:\WINDOWS\system32\cmd.exe
-
The VigorACS automatic service was successfully installed
VigorACS service is starting
VigorACS service was started successfully.
Press any key to continue...
```

11. Now the program has completed the installation of VigorACS SI. Click **Finish** to exit it.



1.2 Platform for Unix

Follow the steps below.

1. Login Linux with root or the root privilege.
2. Locate **VigorACS_Unix_Like_xxxxxx_xxxxx.tar.bz2** from CD and copy it to your hard disk.
3. Decompress the setup packages

```
bzip2 -cd VigorACS_Unix_Like_xxxxxx_xxxxx.tar.bz2 |tar xvf -
```

```
drwxr-x--- 17 root root 4096
drwxr-xr-x  2 root root 8192
drwxr-xr-x  3 root root 4096
drwxrwxrwt 18 root root 4096
drwxr-xr-x 16 root root 4096
drwxr-xr-x 28 root root 4096
-rw-r--r--  1 root root 185348096
[root@localhost ~]# rm vigoracs
rm: remove regular file 'vigoracs' ? y
[root@localhost ~]# ls
bin boot dev etc home initrd lib lost+found misc mnt opt proc root/sbin tftpboot tmp usr var
[root@localhost ~]# cd home/
[root@localhost home]# cd robin/
[root@localhost robin]# ls
vigoracs
[root@localhost robin]# cd vigoracs/
[root@localhost vigoracs]# ls
0.0.1.3 0.0.1.3.1
[root@localhost vigoracs]# cd 0.0.1.3.1/
[root@localhost 0.0.1.3.1]# ls
VigorACS_Unix_Like_Draytek_Pro_0.0.1.3.tar VigorACS_Unix_Like_Draytek_Pro_0.0.1.3.tar.gz
[root@localhost 0.0.1.3.1]# ls
VigorACS_Unix_Like_Draytek_Pro_0.0.1.3.tar VigorACS_Unix_Like_Draytek_Pro_0.0.1.3.tar.gz
[root@localhost 0.0.1.3.1]# ls
VigorACS_Unix_Like_Draytek_Pro_0.0.1.3.tar VigorACS_Unix_Like_Draytek_Pro_0.0.1.3.tar.gz
[root@localhost 0.0.1.3.1]# gzip -cd VigorACS_Unix_Like_Draytek_Pro_0.0.1.3.tar.gz |tar xvf -
```

4. Change the permissions mode of **install.sh** and **uninstall.sh**.

```
chmod 755 ./install.sh
```

```
chmod 755 ./uninstall.sh
```

```
linux/my.cnf
linux/mysql-standard-4.0.24-pc-linux-gnu-i686.tar.gz
solaris_8/coreutils-4.5.4-sol8-sparc-local.gz
solaris_8/jdk-1.5_0_07-solaris-sparc.tar.Z
solaris_8/jdk-1.5_0_07-solaris-sparcv9.tar.Z
solaris_8/libgcc-3.3-sol8-sparc-local.gz
solaris_8/libiconv-1.8-sol8-sparc-local.gz
solaris_8/my.cnf
solaris_8/mysql-4.0.21-sol8-sparc-local.gz
solaris_8/ncurses-5.4-sol8-sparc-local.gz
solaris_8/unzip-5.50-sol8-sparc-local.gz
solaris_9/coreutils-4.5.4-sol9-sparc-local.gz
solaris_9/jdk-1.5_0_07-solaris-sparc.tar.Z
solaris_9/jdk-1.5_0_07-solaris-sparcv9.tar.Z
solaris_9/libgcc-3.3-sol9-sparc-local.gz
solaris_9/libiconv-1.8-sol9-sparc-local.gz
solaris_9/my.cnf
solaris_9/mysql-4.0.21-sol9-sparc-local.gz
solaris_9/ncurses-5.4-sol9-sparc-local.gz
solaris_9/unzip-5.50-sol9-sparc-local.gz
uninstall.sh
vigoracs
vigoracsmysqld
[root@localhost 0.0.1.3.1]# chmod 755 ./install.sh
[root@localhost 0.0.1.3.1]# chmod 755 ./uninstall.sh
[root@localhost 0.0.1.3.1]#
```

5. Execute the installation by entering the following.

```
./install.sh
```

```
solaris_8/libiconv-1.8-sol8-sparc-local.gz
solaris_8/my.cnf
solaris_8/mysql-4.0.21-sol8-sparc-local.gz
solaris_8/ncurses-5.4-sol8-sparc-local.gz
solaris_8/unzip-5.50-sol8-sparc-local.gz
solaris_9/coreutils-4.5.4-sol9-sparc-local.gz
solaris_9/jdk-1_5_0_07-solaris-sparc.tar.Z
solaris_9/jdk-1_5_0_07-solaris-sparcv9.tar.Z
solaris_9/libgcc-3.3-sol9-sparc-local.gz
solaris_9/libiconv-1.8-sol9-sparc-local.gz
solaris_9/my.cnf
solaris_9/mysql-4.0.21-sol9-sparc-local.gz
solaris_9/ncurses-5.4-sol9-sparc-local.gz
solaris_9/unzip-5.50-sol9-sparc-local.gz
uninstall.sh
vigoracs
vigoracsmysql
root@localhost 0.0.1.3.1# chmod 755 ./install.sh
root@localhost 0.0.1.3.1# chmod 755 ./uninstall.sh
root@localhost 0.0.1.3.1# ./install.sh

entering /home/robin/vigoracs/0.0.1.3.1/linux.....

Please create /usr/local/vigoracs
Create it now? <y/n>
y_
```

6. Click **y** to create *vigoracs* folder for storing necessary files.
7. Next, please select the item number which you want to execute. Be aware that VigorACS supports Linux OS. The program will detect the system you have in your computer.

For Linux System

1. Install mysql
 2. Install java
 3. Install VigorACS (It will build one mysql database: tr069)
 4. Upgrade VigorACS (It will upgrade tr069 database)
 5. Exit
- ```
input select num :
```
8. If your computer has installed MySQL and java previously, ignore the installation of them. Otherwise, install all the required items (MySQL, Java and VigorACS) for your system. Item number 4 is used to upgrade VigorACS, so it is not necessary for you to execute for the first time of installation.
  9. Select the item of Exit to finish the installation.



# 2

## Starting VigorACS

### 2.1 Overview

The normal procedure of starting up the VigorACS:

- Start MySQL Database
- Start VigorACS
- Change Bind IP of VigorACS if necessary

Configuration for VigorACS is different based on the operation system you use. Please follow the steps listed below for each platform.

### 2.2 Platform for Windows 2000, XP and Vista

#### 2.2.1 Start MySQL Database

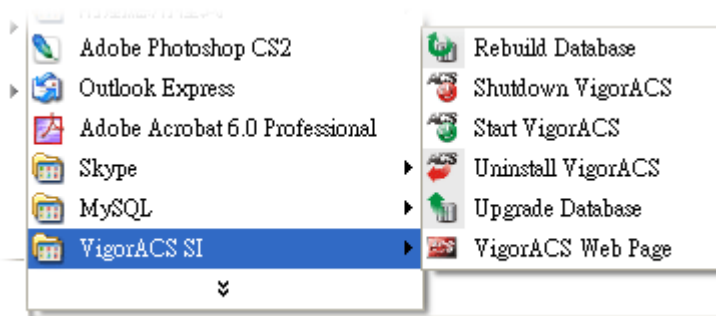
After installing VigorACS, installing program will register MySQL to Windows Service. MySQL will startup automatically after installing VigorACS or rebooting system. Normally, you don't need to worry about this step on Windows. But, if you find any problem on VigorACS, you should check MySQL first.

Please open **Start >Setup >Control Panel >Administrative Tools >Service** to check if the MySQL Service has been initiated or not. If not, please double click it to enable.

#### 2.2.2 Start VigorACS

After installing VigorACS, it will startup automatically. Normally, you don't need to worry about this step on Windows. But, if you find any problem on VigorACS, you could shut down VigorACS and start VigorACS again.

Please open **Start >Setup >Control Panel >Administrative Tools >Service** to check if the VigorACS Service has been initiated or not. If not, please double click it to enable.

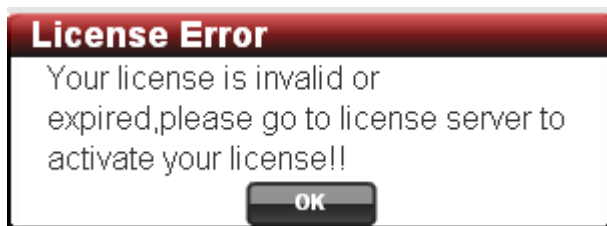


### 2.2.3 Register VigorACS

1. Click **Programs> VigorACS SI> VigorACS Web Page** to access into VigorACS. The login page of VigorACS will be shown as the following:



2. Please type “**root**” as user name and “**admin123**” as password. Then click **Login**. A License Error dialog appears as follows:



3. Click **OK**. A login page for MyVigor web site will pop up automatically.

**This service is available for MyVigor member only. Please login to access MyVigor.  
If you are not one of the members of MyVigor, please create an account first.**

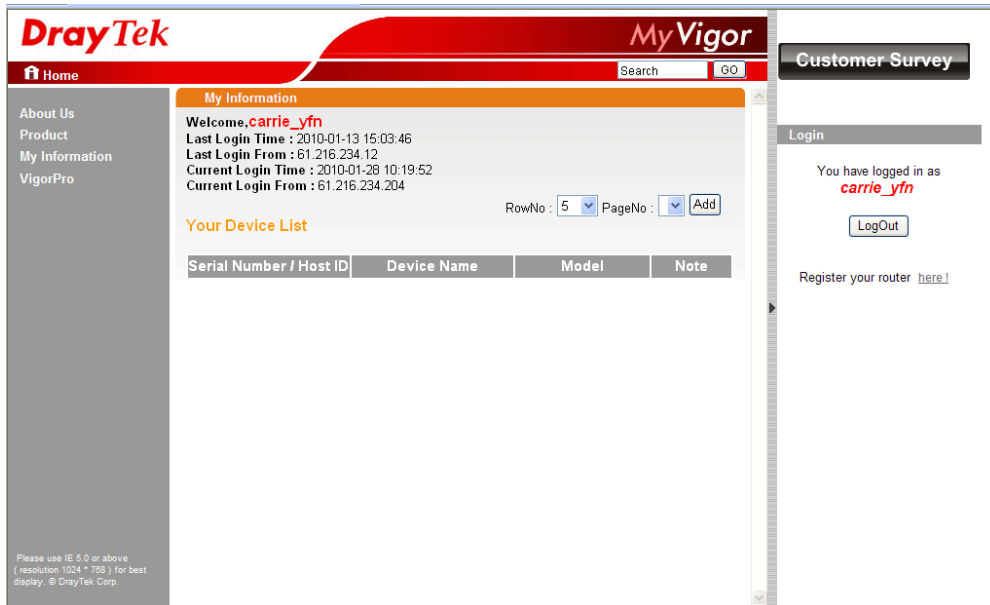


If you are having difficulty logging in, contact our customer service.  
Customer Service : (888) 3 597 2727 or  
email to : [webmaster@draytek.com](mailto:webmaster@draytek.com)

4. Type your account (user name) and password in this page. Enter the authentication code with the characters displayed on the screen. Then, click **Login**.

**Note:** If you do not have any account, simply click [Create an account now](#) to create a new one for using the service provided by MyVigor web site. Refer to Appendix C Creating an Account for MyVigor.

5. MyVigor will verify and authenticate if the user account you typed is allowed to access into the web site. If yes, the following screen will appear.



6. Click **Add** to get the following page.

The screenshot shows the "My Product" registration form. At the top, there is a blue header with the "My Product" logo on the left and a search bar with a "GO" button on the right. Below the header, there is a section titled "Registration Device" with a blue background. The form contains the following fields: "Serial number :" with the value "20100128100607", "Nickname :\*" with the value "carrie\_VigorACS", and "Registration Date :\*" with the value "01-28-2010". At the bottom right of the form, there are two buttons: "Cancel" and "Submit".

- Type a name for identification in the field of **Nickname** and click **Submit**. You can see the following screen. Click **OK**.

Your device has been successfully added to the database.



- In this page, click the serial number link (in this case, it is 1141236).

My Information

Welcome, **carrie\_yfn**  
 Last Login Time : 2010-01-13 15:03:46  
 Last Login From : 61.216.234.12  
 Current Login Time : 2010-01-28 10:19:52  
 Current Login From : 61.216.234.204

RowNo :  PageNo :

Your Device List

| Serial Number / Host ID | Device Name | Model    | Note |
|-------------------------|-------------|----------|------|
| <a href="#">1141236</a> | carrie_yfn  | VigorACS | -    |

- You will get a device information page as shown below:

My Product

Device Information

Nickname : [carrie\\_VigorACS](#)  
 Host ID : [VigorACS](#)  
 Model : [VigorACS](#)

Device's Service

Expired License

| Service | Provider | Action                               | Status                                                                | Start Date | Expired Date | Nodes |
|---------|----------|--------------------------------------|-----------------------------------------------------------------------|------------|--------------|-------|
| ACS     | DT-ACS   | <input type="button" value="Trial"/> | <span style="color: gray;">●</span> <input type="button" value="On"/> | -          | -            | -     |

RowNo :  PageNo :

● Means such service is in use.

● Means such service is not in use.

● Means such service has not been activated yet.

● Means such service is in use and will be invalid soon (less than one month).

Allows you to have the free trial for service.

Allows you to renew service license.

Allows you to activate service.

- If you are the new user of VigorACS SI, you can get a free charge of 30-day service of VigorACS SI. Simply click the **Trial** button to open the following screen.

**Confirm Message**

Cancel

User Name : carrie\_yfn  
 Serial : 20100128100607  
 Model : VigorACS

| License Number                                        | Service Provider | Status | Nodes |
|-------------------------------------------------------|------------------|--------|-------|
| DrayTek VigorACS SI Series End-User License Agreement |                  |        |       |

IMPORTANT:  
 DrayTek IS WILLING TO LICENSE THE ENCLOSED SOFTWARE TO YOU ONLY UPON THE CONDITION THAT YOU ACCEPT ALL OF THE TERMS CONTAINED IN THIS LICENSE AGREEMENT. PLEASE READ THE TERMS CAREFULLY BEFORE COMPLETING THE INSTALLATION PROCESS AS INSTALLING THE SOFTWARE WILL INDICATE YOUR ASSENT TO THEM. IF YOU DO NOT AGREE TO THESE TERMS, THEN DrayTek IS UNWILLING TO LICENSE THE

I have read and accept the above Agreement. (Please check this box).

Next

- Check the box of “I have read and accept the above....” and click Next.

**Apply For A License Number**

Cancel

Service Name: ACS

STEP 2

Activation Date (MM-DD-YYYY):

- Click Register. When the VigorACS License Information page appears, the service is ready for you to use.

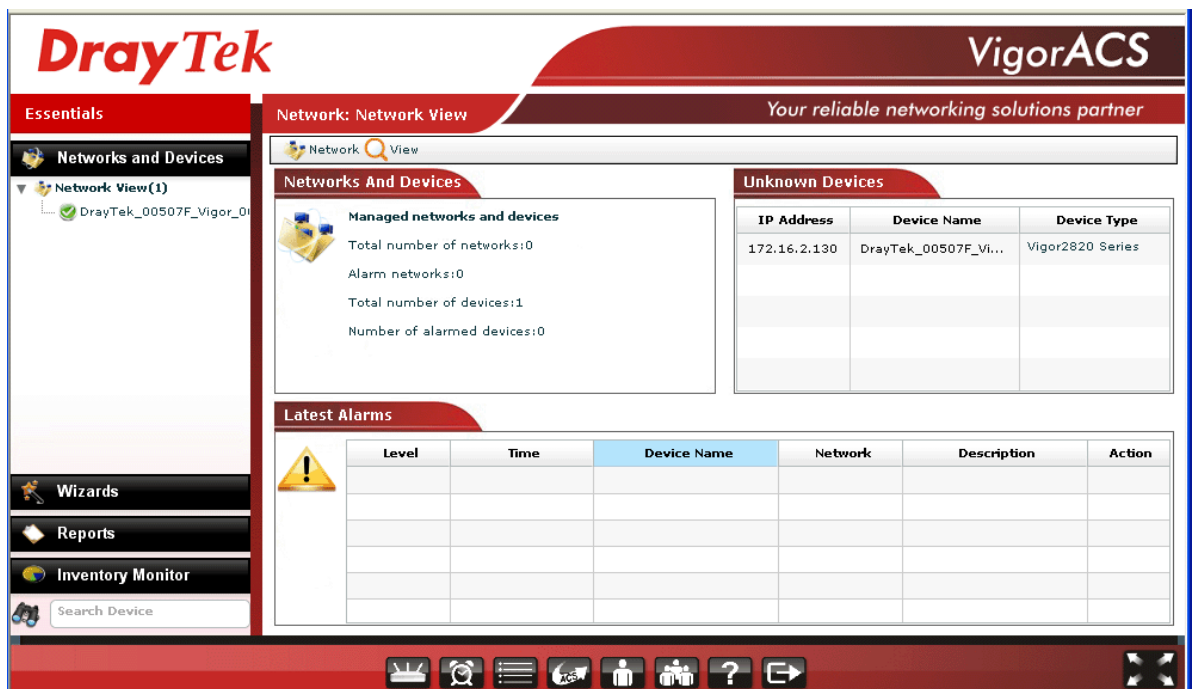
**VigorACS License Information**

|                  |                           |
|------------------|---------------------------|
| Operation        | 1000 : Service activation |
| License id       | 00001b10                  |
| Start date       | 2010-01-28                |
| Expire date      | 2010-02-11                |
| Max node         | 20                        |
| Is trial license | Yes                       |

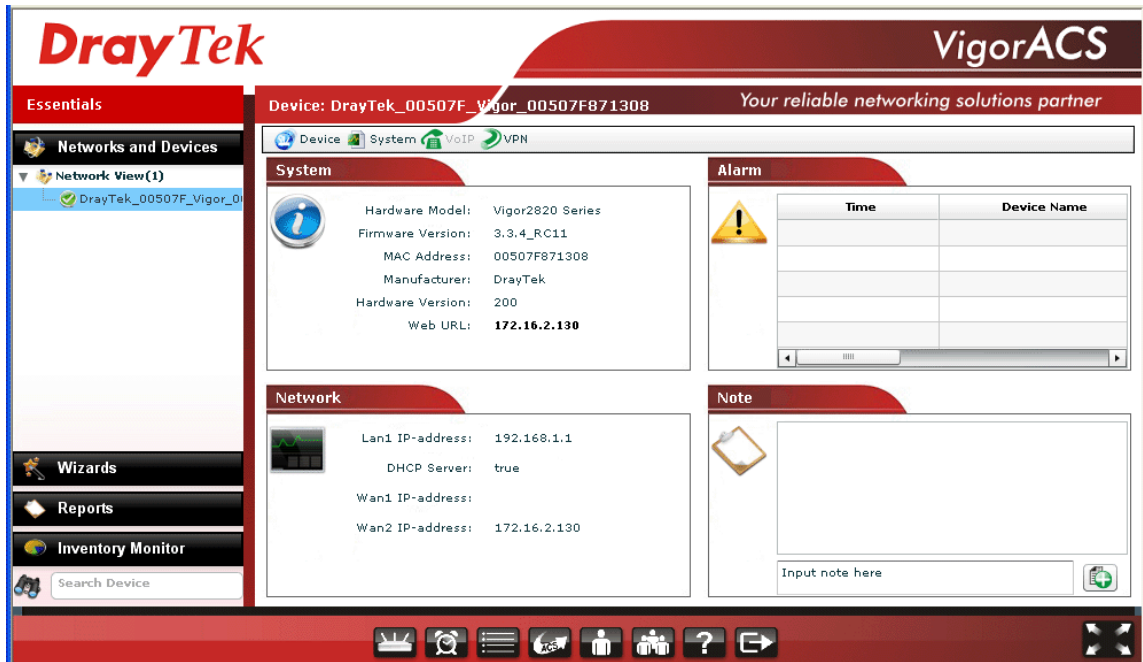
- Click **Login to ACS** to use VigorACS SI service. The login page will appear as follows.



- Type the default settings of User Name (root) and Password (admin123) and click **Login**. The main screen of VigorACS will be shown as follows.



Below shows a view of CPEs added to the database and controlled by VigorACS.



## 2.3 Platform for Linux

### 2.3.1 Start/Shutdown MySQL Database

Execute `"/usr/local/vigoracs/VigorACS/bin/vigoracs.sh"` instruction. The following menu will appear.

1. start mysql
2. shutdown mysql
3. start VigorACS
4. shutdown VigorACS
5. edit bind ip of VigorACS Server(please keying IP or server name)
6. set the MAX and MIN memory value of running java (It will valid after restarting VigorACS )
7. view the MAX and MIN memory value of running java
8. exit

input select num:

```
Start to create snmpdb db
VigorACS MySQL:
MySQL:
Create snmpdb db successfully....
Create snmpdb db table....
Create snmpdb table successfully....
VigorACS and snmpdb install Successfully

1. Install mysql
2. Install java
3. Install VigorACS < It will build one mysql database : snmpdb >
4. Upgrade VigorACS < It will upgrade snmpdb database >
5. Exit
input select num :
5
[root@localhost 0.0.1.3.1]# /usr/local/vigoracs/VigorACS/bin/vigoracs.sh
1. start mysql
2. shutdown mysql
3. start VigorACS
4. shutdown VigorACS
5. edit bind ip of VigorACS Server(please keyin ip or servername)
6. set the MAX and MIN memory vaule of running java (It will valid after restarting VigorACS)
7. view the MAX and MIN memory vaule of running java
8. exit
input select num :

```

Type item number **1** to start MySQL database if necessary. Usually MySQL daemon will start automatically after installing VigorACS server.

---

**Note:** You can type "*ps -ef|grep mysql*" to view the content of MySQL. If you want to shutdown MySQL database, simply type the menu item **2** to close MySQL.

---

### 2.3.2 Start/Shutdown VigorACS

For the first time of starting the VigorACS on Linux system, the startup program will need you to input Server IP. Select item number **3** for starting VigorACS. And type the required IP address used for initiating.

```

http://developer.java.sun.com/developer/bugParade/bugs/4465334.html
done
fi
"vigoracsserver.sh"
[root@localhost bin]# ls
changeip.bat jboss_init_redhat.sh probe.sh set_memory.sh StartVigorACS.bat vigoracs.sh
changeip.bat.bak jboss_init_suse.sh run.bat shutdown.bat twiddle.bat VigorACS.url
classpath.sh memory.txt run.conf shutdown.jar twiddle.jar vstools.bat
hs_err_pid508.log noip.bat run.jar shutdown.sh twiddle.sh wstools.sh
jboss_init_hpux.sh probe.bat run.sh ShutdownVigorACS.bat vigoracsserver.sh
[root@localhost bin]# chmod 755 vigoracs.sh
[root@localhost bin]# chmod 755 vigoracsserver.sh
[root@localhost bin]# ./vigoracs.sh
1. start mysql
2. shutdown mysql
3. start VigorACS
4. shutdown VigorACS
5. edit bind ip of VigorACS Server<please keyin ip or servername>
6. set the MAX and MIN memory vaule of running java <It will valid after restarting VigorACS >
7. view the MAX and MIN memory vaule of running java
8. exit
input select num :
3
Which ip address do you want to bind for VigorACS service < x.x.x.x or Enter for bind localhost.localdomain server?>
172.17.3.132
```

The system will start VigorACS with the specified IP address.

### 2.3.3 Edit VigorACS IP

Once you input the IP address, VigorACS will keep it on *startway.txt*. However, if you want to change the server bind IP for some reason, please follow the steps below:

1. Execute `"/usr/local/vigoracs/VigorACS/bin/vigoracs.sh"` instruction.
2. Stop VigorACS by selecting item number **2** to shutdown VigorACS. Such action can make sure the new changed IP setting being effective.
3. Then select item number **5** to edit *startway.txt* by using *vi* editor.
4. When you finished the change of bind IP, please select item number **3** to start VigorACS again.



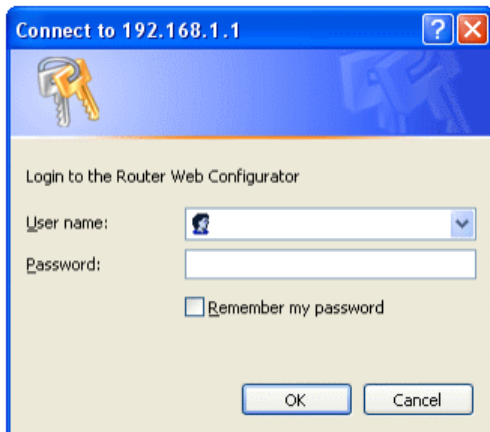
# 3

## Configuration on CPE Device

### 3.1 Set ACS URL on CPE

To manage CPEs through VigorACS, you have to set ACS URL on CPE first and set username and password for VigorACS.

1. Connect one CPE (e.g., Vigor2910 series).
2. Open a web browser (for example, **IE**, **Mozilla Firefox** or **Netscape**) on your computer and type **http://192.168.1.1**.
3. Please type username and password on the window. If you don't know the correct username and password, please consult your dealer to get them. In this section, we take the figures displayed on Windows as examples.



4. Go to **System Maintenance -> TR-069**.

**System Maintenance >> TR-069 Setting**

#### ACS and CPE Settings

|                                                                       |                                                                                   |
|-----------------------------------------------------------------------|-----------------------------------------------------------------------------------|
| <b>ACS Server</b>                                                     |                                                                                   |
| URL                                                                   | <input type="text" value="http://172.17.3.185:80/ACSServer/services/ACSServlet"/> |
| Username                                                              | <input type="text" value="acs"/>                                                  |
| Password                                                              | <input type="password" value="*****"/>                                            |
| <b>CPE Client</b>                                                     |                                                                                   |
| <input checked="" type="radio"/> Enable <input type="radio"/> Disable |                                                                                   |
| URL                                                                   | <input type="text" value="http://172.16.3.229:8069/cwm/CRN.html"/>                |
| Port                                                                  | <input type="text" value="8069"/>                                                 |
| Username                                                              | <input type="text" value="vigor"/>                                                |
| Password                                                              | <input type="password" value="*****"/>                                            |

#### Periodic Inform Settings

|                                         |                                            |
|-----------------------------------------|--------------------------------------------|
| <input type="radio"/> Disable           |                                            |
| <input checked="" type="radio"/> Enable |                                            |
| Interval Time                           | <input type="text" value="900"/> second(s) |

OK

- If the connected CPE needs to be authenticated, please set URL as the following and type

username and password for ACS server:

*http://{IP address of VigorACS}:80/ACSServer/services/ACSServlet*

- If the connected CPE does not need to be authenticated please set URL as the following:  
*http://{ IP address of VigorACS}:80/ACSServer/services/UnAuthACSServlet*
  - If the connected CPE needs to be authenticated and the data transmission between CPE and VigorACS needs to be encrypted (SSL), please set URL as the following:  
*https://{IP address of VigorACS}:443/ACSServer/services/ACSServlet*
  - If the connected CPE needs not to be authenticated but the data transmission between CPE and VigorACS needs to be encrypted (SSL), please set URL as the following:  
*https://{IP address of VigorACS}:443/ACSServer/services/UnAuthACSServlet*
5. Fill Username and Password for VigorACS Server for authentication. Please type as the following:  
**Username:** *acs*  
**Password:** *password*
  6. For the username and password of CPE client, it is not necessary for you to type them.

### 3.2 Invoke Remote Management for CPE

You have to make sure that the CPE device you want to connect supports VigorACS features. Please consult your dealer if you have no idea in it.

1. Suppose WAN IP of CPE device has been setup successfully. And you can access into Internet without difficulty.
2. Login the device by web.
3. Go to **System Maintenance->Management Setup**.
4. Check **Allow management from the Internet** to set management access control.

System Maintenance >> Management

**Management Setup**

**Management Access Control**

Allow management from the Internet

FTP Server

HTTP Server

HTTPS Server

Telnet Server

SSH Server

Disable PING from the Internet

**Access List**

| List | IP                   | Subnet Mask          |
|------|----------------------|----------------------|
| 1    | <input type="text"/> | <input type="text"/> |
| 2    | <input type="text"/> | <input type="text"/> |
| 3    | <input type="text"/> | <input type="text"/> |

**Management Port Setup**

User Define Ports  Default Ports

Telnet Port  (Default: 23)

HTTP Port  (Default: 80)

HTTPS Port  (Default: 443)

FTP Port  (Default: 21)

SSH Port  (Default: 22)

**SNMP Setup**

Enable SNMP Agent

Get Community

Set Community

Manager Host IP

Trap Community

Notification Host IP

Trap Timeout  seconds

OK

### 3.3 Enable WAN Connection on CPE

You have to make sure the CPE device you want to connect has been configured properly and

can access into Internet.

1. Login the device by web.
2. Open **WAN->Internet Access**.
3. Choose **Static or Dynamic IP** as **Access Mode** and click **Details Page**.
4. Click **Enable**.
5. Click **Specify an IP address**. Type correct WAN IP address, subnet mask and gateway IP address for your CPE. Then click **OK**.

WAN >> Internet Access

---

**WAN 1**

|                                                                                                                                                                                                                                                                                                                                                                                                                                                                                                                                                                                                                                                                                                                                                                       |                                                                                                                                                                                                                                                                                                                                                                                                                                                                                                                                                                                                                                                                                                                                                                                                                                                                                                                                                                                                                           |
|-----------------------------------------------------------------------------------------------------------------------------------------------------------------------------------------------------------------------------------------------------------------------------------------------------------------------------------------------------------------------------------------------------------------------------------------------------------------------------------------------------------------------------------------------------------------------------------------------------------------------------------------------------------------------------------------------------------------------------------------------------------------------|---------------------------------------------------------------------------------------------------------------------------------------------------------------------------------------------------------------------------------------------------------------------------------------------------------------------------------------------------------------------------------------------------------------------------------------------------------------------------------------------------------------------------------------------------------------------------------------------------------------------------------------------------------------------------------------------------------------------------------------------------------------------------------------------------------------------------------------------------------------------------------------------------------------------------------------------------------------------------------------------------------------------------|
| <p><b>Static or Dynamic IP (DHCP Client)</b></p> <p><input checked="" type="radio"/> Enable <input type="radio"/> Disable</p> <hr/> <p><b>ISDN Dial Backup Setup</b></p> <p>Dial Backup Mode <input type="text" value="None"/></p> <hr/> <p><b>Keep WAN Connection</b></p> <p><input type="checkbox"/> Enable PING to keep alive</p> <p>PING to the IP <input type="text"/></p> <p>PING Interval <input type="text" value="0"/> minute(s)</p> <hr/> <p><b>WAN Connection Detection</b></p> <p>Mode <input type="text" value="ARP Detect"/></p> <p>Ping IP <input type="text"/></p> <p>TTL: <input type="text"/></p> <hr/> <p><b>MTU</b> <input type="text" value="1442"/> (Max: 1500)</p> <hr/> <p><b>RIP Protocol</b></p> <p><input type="checkbox"/> Enable RIP</p> | <p><b>WAN IP Network Settings</b> <input type="button" value="WAN IP Alias"/></p> <p><input type="radio"/> Obtain an IP address automatically</p> <p>Router Name <input type="text"/> *</p> <p>Domain Name <input type="text"/> *</p> <p>* : Required for some ISPs</p> <p><input checked="" type="radio"/> Specify an IP address</p> <p>IP Address <input type="text" value="172.16.3.229"/></p> <p>Subnet Mask <input type="text" value="255.255.0.0"/></p> <p>Gateway IP Address <input type="text" value="172.16.3.4"/></p> <hr/> <p><b>DNS Server IP Address</b></p> <p>Primary IP Address <input type="text"/></p> <p>Secondary IP Address <input type="text"/></p> <hr/> <p><input checked="" type="radio"/> Default MAC Address</p> <p><input type="radio"/> Specify a MAC Address</p> <p>MAC Address:</p> <p><input type="text" value="00"/> <input type="text" value="50"/> <input type="text" value="7F"/> <input type="text" value="DD"/> <input type="text" value="15"/> <input type="text" value="19"/></p> |
|-----------------------------------------------------------------------------------------------------------------------------------------------------------------------------------------------------------------------------------------------------------------------------------------------------------------------------------------------------------------------------------------------------------------------------------------------------------------------------------------------------------------------------------------------------------------------------------------------------------------------------------------------------------------------------------------------------------------------------------------------------------------------|---------------------------------------------------------------------------------------------------------------------------------------------------------------------------------------------------------------------------------------------------------------------------------------------------------------------------------------------------------------------------------------------------------------------------------------------------------------------------------------------------------------------------------------------------------------------------------------------------------------------------------------------------------------------------------------------------------------------------------------------------------------------------------------------------------------------------------------------------------------------------------------------------------------------------------------------------------------------------------------------------------------------------|

**Note:** Reboot the CPE device and re-log into VigorACS SI. CPE which has registered to VigorACS will be captured and displayed on the home page of VigorACS SI.

This page is left blank.

# 4

## Application and Tutorial

This chapter will guide you to create an account to access into MyVigor web site. Simply follow the instructions listed below to finish the account creation. Refer to C.1 or C.2 to create a new account.

**Note:** To register VigorACS SI, please return to Chapter 3 and follow the corresponding steps for registration.

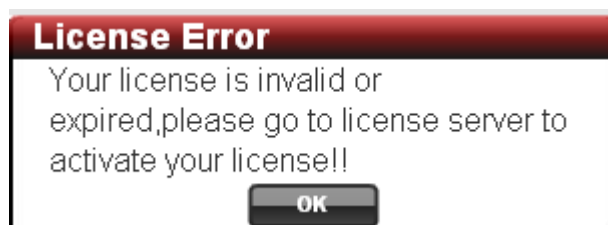
### 4.1 Creating an Account for MyVigor

#### 4.1.1 Creating an Account via VigorACS SI

1. Click **Programs> VigorACS SI> VigorACS Web Page** to access into VigorACS. The login page of VigorACS will be shown as the following:



2. Please type “root” as user name and “admin123” as password. Then click **Login**. A License Error dialog appears as follows:



3. Click **OK**. A login page for MyVigor web site will pop up automatically.

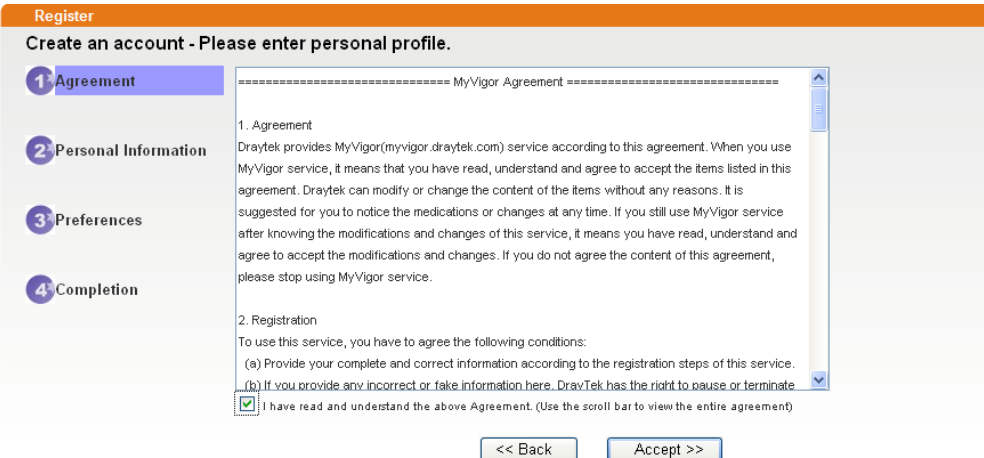
**This service is available for MyVigor member only. Please login to access MyVigor. If you are not one of the members of MyVigor, please create an account first.**



The login form has an orange header with the word "LOGIN" in white. Below the header, there are three input fields: "UserName :", "Password :", and "Auth Code :". To the right of the "Auth Code" field is a CAPTCHA image showing the text "AYi GXZ" in colorful letters. Below the CAPTCHA is a link that says "If you cannot read the word, [click here](#)". Underneath that are two links: "Forget password?" and a "Login" button. At the bottom of the form, there is a question "Don't have a MyVigor Account ?" followed by a blue link "Create an account now".

If you are having difficulty logging in, contact our customer service.  
Customer Service : (888) 3 597 2727 or  
email to : [webmaster@draytek.com](mailto:webmaster@draytek.com)

4. Click the link of **Create an account now**.
5. Check to confirm that you accept the Agreement and click **Accept**.



The registration form has an orange header with the word "Register" in white. Below the header, it says "Create an account - Please enter personal profile." On the left side, there is a vertical list of four steps: "1 Agreement", "2 Personal Information", "3 Preferences", and "4 Completion". The "1 Agreement" step is currently selected and highlighted in blue. The main content area shows the "MyVigor Agreement" text, which includes sections for "1. Agreement" and "2. Registration". At the bottom of the agreement text, there is a checkbox with a checkmark and the text "I have read and understand the above Agreement. (Use the scroll bar to view the entire agreement)". Below the checkbox are two buttons: "<< Back" and "Accept >>".

6. Type your personal information in this page and then click **Continue**.

Register

Create an account - Please enter personal profile. (Fields marked by (\*) are required)

1 Agreement

2 **Personal Information**

3 Preferences

4 Completion

**Account Information**

UserName:\* Mary (3 ~ 20 characters)

Password:\* \*\*\*\* (4 ~ 20 characters : Do not set the same as the username.)

Confirm Password:\* \*\*\*\*

**Personal Information**

First Name:\* Mary

Last Name:\* Ted

Company Name: Tech Ltd.

Email Address:\* mary\_ted@tech.com  
Please note that a valid E-mail address is required to receive the Subscription Code. You will need this code to activate your account.

Tel: 0 -

Country:\* SWITZERLAND

Career:\* Supervisor

<< Back

7. Choose proper selection for your computer and click **Continue**.

Register

Create an account - Please enter personal profile.

1 Agreement

2 Personal Information

3 **Preferences**

4 Completion

How did you find out about this website? Internet

What kind of anti-virus do you use? AntiVir

I would like to subscribe to the MyVigor e-letter.

I would like to receive DrayTek product news.

Please select the mail server for receiving the verification mail. Global Server

<< Back

8. Now you have created an account successfully. Click **START**.

Register

Create an account - Please enter personal profile.

1 Agreement

2 Personal Information

3 Preferences

4 **Completion**

**Completion**

A confirmation email has been sent to mary\_ted@tech.com  
Please click on the activation link in the email  
to activate your account

**START**

9. Check to see the confirmation *email* with the title of **New Account Confirmation Letter from [www.vigorpro.com](http://www.vigorpro.com)**.

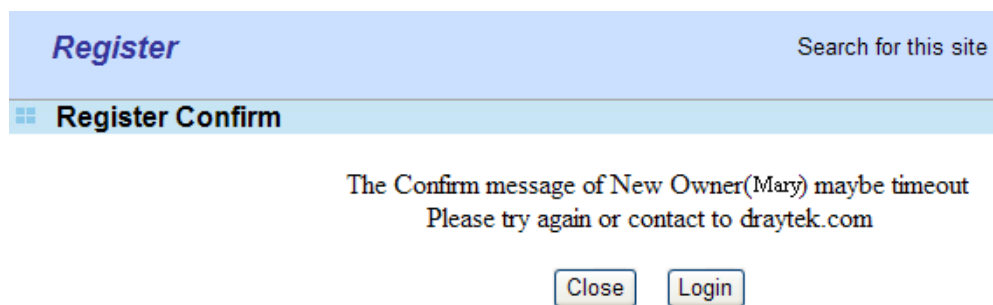
\*\*\*\*\* This is an automated message from myvigor.draytek.com.\*\*\*\*\*

Thank you (**Mary**) for creating an account.

Please click on the activation link below to activate your account

Link : [Activate my Account](#)

10. Click the **Activate my Account** link to enable the account that you created. The following screen will be shown to verify the register process is finished. Please click **Login**.



**Register** Search for this site

**Register Confirm**

The Confirm message of New Owner(Mary) maybe timeout  
Please try again or contact to draytek.com

Close Login

11. When you see the following page, please type in the account and password (that you just created) in the fields of **UserName** and **Password**. Then type th

This service is available for MyVigor member only. Please login to access MyVigor.  
If you are not one of the members of MyVigor, please create an account first.



**LOGIN**

UserName :

Password :

Auth Code :  **T4he1C**

If you cannot read the word, [click here](#)

Forget password?

Don't have a MyVigor Account ? [Create an account now](#)

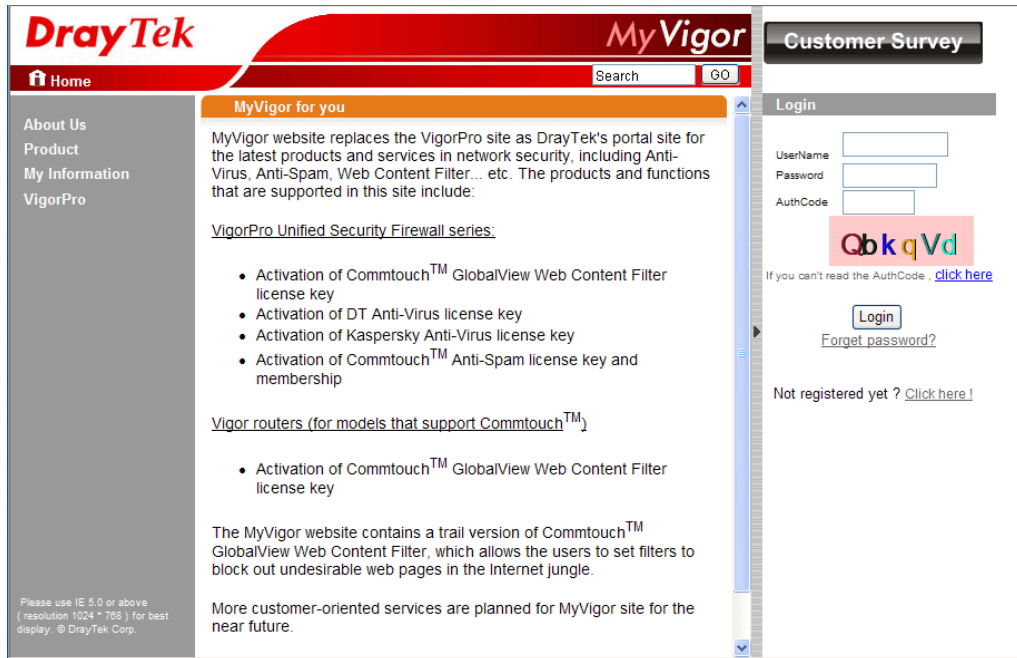
If you are having difficulty logging in, contact our customer service.  
Customer Service : (888) 3 597 2727 or  
email to :[webmaster@draytek.com](mailto:webmaster@draytek.com)



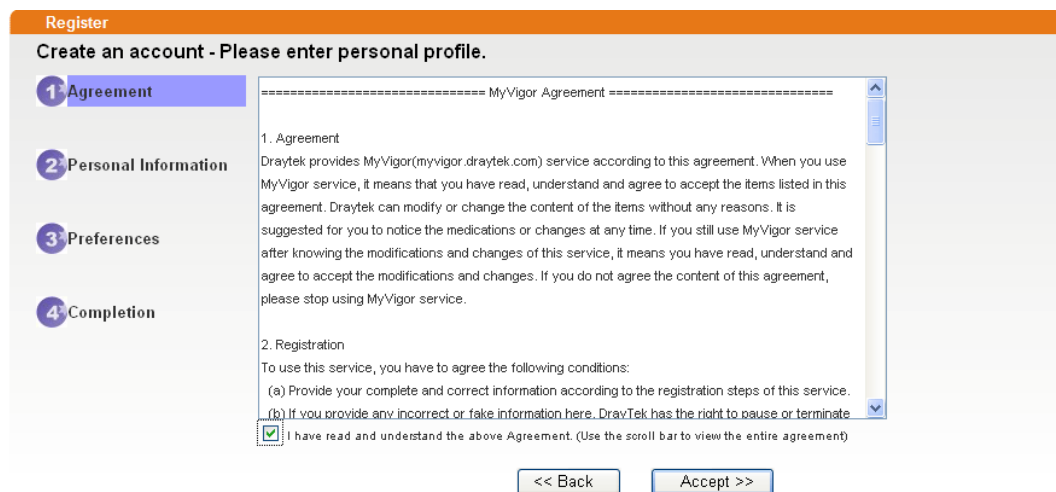
12. Now, click **Login**. Your account has been activated.

#### 4.1.2 Creating an Account via MyVigor Web Site

1. Access into <http://myvigor.draytek.com>. Find the line of **Not registered yet?**. Then, click the link **Click here!** to access into next page.



2. Check to confirm that you accept the Agreement and click **Accept**.



3. Type your personal information in this page and then click **Continue**.

4. Choose proper selection for your computer and click **Continue**.

5. Now you have created an account successfully. Click **START**.

6. Check to see the confirmation *email* with the title of **New Account Confirmation Letter from [www.vigorpro.com](http://www.vigorpro.com)**.

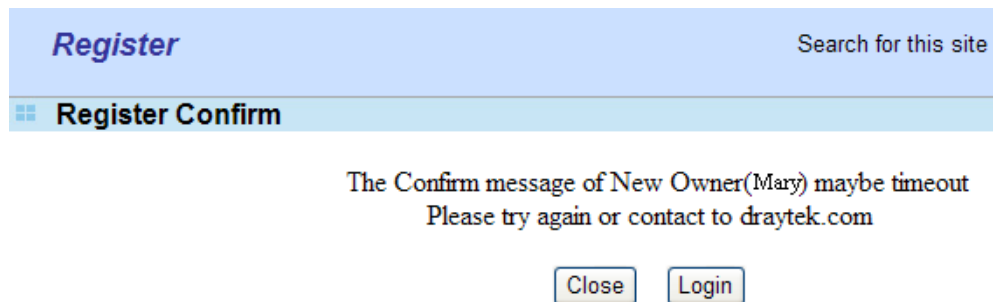
\*\*\*\*\* This is an automated message from myvigor.draytek.com.\*\*\*\*\*

Thank you (**Mary**) for creating an account.

Please click on the activation link below to activate your account

Link : [Activate my Account](#)

7. Click the **Activate my Account** link to enable the account that you created. The following screen will be shown to verify the register process is finished. Please click **Login**.



**Register** Search for this site

**Register Confirm**

The Confirm message of New Owner(Mary) maybe timeout  
Please try again or contact to draytek.com

Close Login

8. When you see the following page, please type in the account and password (that you just created) in the fields of **UserName** and **Password**. Then type the code in the box of Auth Code according to the value displayed on the right side of it.

**This service is available for MyVigor member only. Please login to access MyVigor.  
If you are not one of the members of MyVigor, please create an account first.**



**LOGIN**

UserName :

Password :

Auth Code :  **T4he1C**

If you cannot read the word, [click here](#)

Forget password?

Don't have a MyVigor Account ? [Create an account now](#)

If you are having difficulty logging in, contact our customer service.  
Customer Service : (888) 3 697 2727 or  
email to : [webmaster@draytek.com](mailto:webmaster@draytek.com)

Now, click **Login**. Your account has been activated.

**Note:** To register VigorACS SI, please return to Chapter 3 and follow the corresponding steps for registration.

## 4.2 Upgrade VigorACS with New License Key

To control and manage the CPEs effectively, the administrator must acquire a new license from DrayTek regularly. Usually, the valid time of the license is one year. You have to renew your license when it is going to be expired.

Please follow the steps listed below to get a new license for your VigorACS SI.

### 4.2.1 License Is Invalid or Expired

1. Click **Programs> VigorACS SI> VigorACS Web Page** to access into VigorACS. The login page of VigorACS will be shown as the following:



2. Please type “**root**” as user name and “**admin123**” as password. Then click **Login**. A License Error dialog appears as follows. It indicates that you cannot access into VigorACS SI due to the invalid license. Please purchase a new one and return here to upgrade the license for using VigorACS SI. When you have prepared a new license, click the **OK** button.



3. A login page for MyVigor web site will pop up automatically. Type your account (user name) and password in this page. Enter the authentication code with the characters displayed on the screen. Then, click **Login**.

This service is available for MyVigor member only. Please login to access MyVigor.  
If you are not one of the members of MyVigor, please create an account first.

**LOGIN**

UserName :

Password :

Auth Code :  AYi GXZ

If you cannot read the word, [click here](#)

[Forget password?](#)

---

Don't have a MyVigor Account ? [Create an account now](#)

If you are having difficulty logging in, contact our customer service.  
Customer Service : (888) 3 597 2727 or  
email to : [webmaster@draytek.com](mailto:webmaster@draytek.com)

4. MyVigor will verify and authenticate if the user account you typed is allowed to access into the web site. If yes, Device Information will appear as follows. Find and click **Renew** for the service item of ACS.

**My Product**

**Device Information**

Nickname : [carrie\\_yfn](#)  
Host ID :  
Model : [VigorACS](#)

| Device's Service |          | Expired License                      |                                     |            |              |       |
|------------------|----------|--------------------------------------|-------------------------------------|------------|--------------|-------|
| Service          | Provider | Action                               | Status                              | Start Date | Expired Date | Nodes |
| ACS              | DT-ACS   | <input type="button" value="Renew"/> | ● <input type="button" value="On"/> | -          | -            |       |

|                                                                                                                                                                                                                                                                                                                                                                                                                           |                                                                                                                                                                                                                                                                                                                                                                                                                                                                                                                                                     |              |                                                |              |                                      |                 |                                 |
|---------------------------------------------------------------------------------------------------------------------------------------------------------------------------------------------------------------------------------------------------------------------------------------------------------------------------------------------------------------------------------------------------------------------------|-----------------------------------------------------------------------------------------------------------------------------------------------------------------------------------------------------------------------------------------------------------------------------------------------------------------------------------------------------------------------------------------------------------------------------------------------------------------------------------------------------------------------------------------------------|--------------|------------------------------------------------|--------------|--------------------------------------|-----------------|---------------------------------|
| <ul style="list-style-type: none"> <li><span style="color: green;">●</span> Means such service is in use.</li> <li><span style="color: red;">●</span> Means such service is not in use.</li> <li><span style="color: gray;">●</span> Means such service has not been activated yet.</li> <li><span style="color: yellow;">●</span> Means such service is in use and will be invalid soon(less than one month).</li> </ul> | <table style="width: 100%; border-collapse: collapse;"> <tr> <td style="border: 1px solid #ccc; padding: 2px;"><b>Trial</b></td> <td style="font-size: x-small;">Allows you to have the free trial for service.</td> </tr> <tr> <td style="border: 1px solid #ccc; padding: 2px;"><b>Renew</b></td> <td style="font-size: x-small;">Allows you to renew service license.</td> </tr> <tr> <td style="border: 1px solid #ccc; padding: 2px;"><b>Activate</b></td> <td style="font-size: x-small;">Allows you to activate service.</td> </tr> </table> | <b>Trial</b> | Allows you to have the free trial for service. | <b>Renew</b> | Allows you to renew service license. | <b>Activate</b> | Allows you to activate service. |
| <b>Trial</b>                                                                                                                                                                                                                                                                                                                                                                                                              | Allows you to have the free trial for service.                                                                                                                                                                                                                                                                                                                                                                                                                                                                                                      |              |                                                |              |                                      |                 |                                 |
| <b>Renew</b>                                                                                                                                                                                                                                                                                                                                                                                                              | Allows you to renew service license.                                                                                                                                                                                                                                                                                                                                                                                                                                                                                                                |              |                                                |              |                                      |                 |                                 |
| <b>Activate</b>                                                                                                                                                                                                                                                                                                                                                                                                           | Allows you to activate service.                                                                                                                                                                                                                                                                                                                                                                                                                                                                                                                     |              |                                                |              |                                      |                 |                                 |

5. From the page, you can see the basic information for the trial version of VigorACS.

- You will be guided to the following page. Type the new license number you purchase from the service provider in the corresponding field. And click **Add License**.

**Apply For A License Number**

Cancel

Service Name: **ACS**  
Service Provider: **DT-ACS**

**STEP 1**

License Number :

**Tip :** Please ensure that the licence key you enter is for the correct (your preferred) service provider.

Next

- The new added license number will be displayed on the screen as shown below. Click **Next** for next page.

**Apply For A License Number**

Cancel

Service Name: **ACS**  
Service Provider: **DT-ACS**

**STEP 1**

License Number :

**Tip :** Please ensure that the licence key you enter is for the correct (your preferred) service provider.

| Flag                               | License                 | Provider | Nodes | Status |
|------------------------------------|-------------------------|----------|-------|--------|
| <input type="button" value="del"/> | FD234-B61E3-3676F-B37B7 | DT-ACS   | 1000  | valid  |

Next

- Check the box of **“I have read and accepted the above...”** and click **Next**.

**Confirm Message**

Cancel

User Name : **yfn**  
Serial : **20100128013339**  
Model : **VigorACS**

| License Number          | Service Provider | Status | Nodes |
|-------------------------|------------------|--------|-------|
| FD234-B61E3-3676F-B37B7 | DT-ACS           | valid  | 1000  |

DrayTek VigorACS SI Series End-User License Agreement

**IMPORTANT:**

DrayTek IS WILLING TO LICENSE THE ENCLOSED SOFTWARE TO YOU ONLY UPON THE CONDITION THAT YOU ACCEPT ALL OF THE TERMS CONTAINED IN THIS LICENSE AGREEMENT. PLEASE READ THE TERMS CAREFULLY BEFORE COMPLETING THE INSTALLATION PROCESS AS INSTALLING THE SOFTWARE WILL INDICATE YOUR ASSENT TO THEM. IF YOU DO NOT AGREE TO THESE TERMS, THEN DrayTek IS UNWILLING TO LICENSE THE

I have read and accept the above Agreement. (Please check this box).

Next

9. The activation date will be displayed automatically. Simply click **Next**.

10. A confirm message page will be shown as follows. If there is no problem, please click **Confirm**.

| License Number / Host ID | Service Provider | Status | Nodes                    |
|--------------------------|------------------|--------|--------------------------|
| FD234-B61E3-3676F-B37B7  | DT-ACS           | valid  | 1000                     |
|                          |                  |        | <b>Total: 1000 nodes</b> |

11. When the following screen appears, it means the new license for VigorACS SI has been activated. Click **Login to VigorACS**.

12. Click **Login to ACS**. You will see the following screen with the new license information.

#### 4.2.2 License Is Valid Still

1. Click **Programs> VigorACS SI> VigorACS Web Page** to access into VigorACS. The login page of VigorACS will be shown as the following:

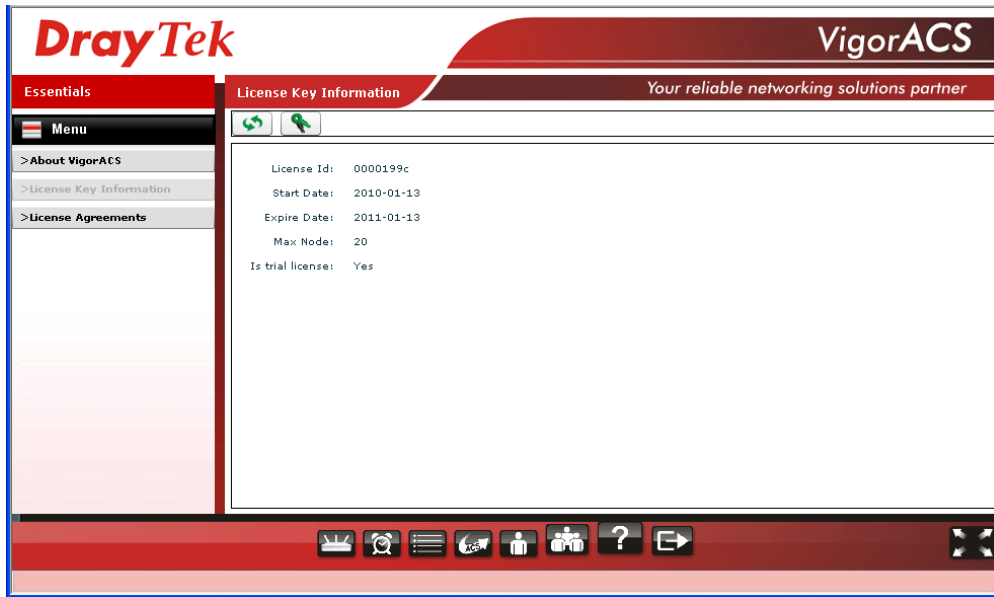



2. Please type “**root**” as user name and “**admin123**” as password. Then click **Login**.





3. Open **Help**.



4. Click  from License Key Information page.
5. The welcome screen will be shown as follows. Type the username and password, and click **Login**.

This service is available for MyVigor member only. Please login to access MyVigor.  
If you are not one of the members of MyVigor, please create an account first.

**LOGIN**

UserName :

Password :

Auth Code :  

If you cannot read the word, [click here](#).

[Forget password?](#)

---

Don't have a MyVigor Account ? [Create an account now](#)

If you are having difficulty logging in, contact our customer service.  
Customer Service : (888) 3 597 2727 or  
email to : [webmaster@draytek.com](mailto:webmaster@draytek.com)

- The following screen will appear. Find and click **Renew** for the service item of ACS.

**My Product**

**Device Information**  
 Nickname : **carrie\_yfn**  
 Host ID :  
 Model : **VigorACS**

Rename Delete Transfer Back

Device's Service Expired License

| Service | Provider | Action | Status | Start Date | Expired Date | Nodes |
|---------|----------|--------|--------|------------|--------------|-------|
| ACS     | DT-ACS   | Renew  | ● On   | 2010-03-03 | 2010-04-02   | 20    |

● Means such service is in use.  
 ● Means such service is not in use.  
 ● Means such service has not been activated yet.  
 ● Means such service is in use and will be invalid soon(less than one month).

Trial Allows you to have the free trial for service.  
 Renew Allows you to renew service license.  
 Activate Allows you to activate service.

- You will be guided to the following page. Type the new license number you purchase from the service provider in the corresponding field. And click **Add License**.

**Apply For A License Number**

Cancel

Service Name: **ACS**  
 Service Provider: **DT-ACS**

**STEP 1**

License Number :  Add License

**Tip :** Please ensure that the licence key you enter is for the correct (your preferred) service provider.

Next

- The new added license number will be displayed on the screen as shown below. Click **Next** for next page.

**Apply For A License Number**

Cancel

Service Name: **ACS**  
 Service Provider: **DT-ACS**

**STEP 1**

License Number :  Add License

**Tip :** Please ensure that the licence key you enter is for the correct (your preferred) service provider.

| Flag | License                 | Provider | Nodes | Status |
|------|-------------------------|----------|-------|--------|
| del  | FD234-B61E3-3676F-B37B7 | DT-ACS   | 1000  | valid  |

Next

- Check the box of **“I have read and accepted the above...”** and click **Next**.

**Confirm Message**

Cancel

User Name : yfn  
 Serial : 20100128013339  
 Model : VigorACS

| License Number          | Service Provider | Status | Nodes |
|-------------------------|------------------|--------|-------|
| FD234-B61E3-3676F-B37B7 | DT-ACS           | valid  | 1000  |

DrayTek VigorACS SI Series End-User License Agreement

IMPORTANT:

DrayTek IS WILLING TO LICENSE THE ENCLOSED SOFTWARE TO YOU ONLY UPON THE CONDITION THAT YOU ACCEPT ALL OF THE TERMS CONTAINED IN THIS LICENSE AGREEMENT. PLEASE READ THE TERMS CAREFULLY BEFORE COMPLETING THE INSTALLATION PROCESS AS INSTALLING THE SOFTWARE WILL INDICATE YOUR ASSENT TO THEM. IF YOU DO NOT AGREE TO THESE TERMS, THEN DrayTek IS UNWILLING TO LICENSE THE

I have read and accept the above Agreement. (Please check this box).

Next

- The activation date will be displayed automatically. Simply click **Next**.

**Apply For A License Number**

Cancel

Service Name: ACS

**STEP 2**

Activation Date (MM-DD-YYYY):

- A confirm message page will be shown as follows. If there is no problem, please click **Confirm**.

**Confirm Message**

User Name : carrie\_yfn  
 Host ID :  
 Activate Date : 2010-04-03  
 Expired Date : 2011-04-02

| License Number / Host ID | Service Provider | Status | Nodes                    |
|--------------------------|------------------|--------|--------------------------|
| FD234-B61E3-3676F-B37B7  | DT-ACS           | valid  | 1000                     |
|                          |                  |        | <b>Total: 1000 nodes</b> |

12. When the following screen appears, it means the new license for VigorACS SI has been added. You can access into VigorACS.

**VigorACS License Information**

|                  |                           |
|------------------|---------------------------|
| Operation        | 1000 : Service activation |
| License id       | 00001b7a                  |
| Start date       | 2010-03-03                |
| Expire date      | 2010-04-02                |
| Max node         | 00000020                  |
| Is trial license | Yes                       |

**Note:** For the trial version is still in valid period, you will see VigorACS SI with two licenses controlled under My Vigor website.

When the trial version is expired, please click the On (with red light) button to activate the new added license for VigorACS SI.

Host ID :  
Model : **VigorACS**

| Device's Service |          | Expired License                      |        |            |              |       |
|------------------|----------|--------------------------------------|--------|------------|--------------|-------|
| Service          | Provider | Action                               | Status | Start Date | Expired Date | Nodes |
| ACS              | DT-ACS   | <input type="button" value="Renew"/> | On     | 2010-03-03 | 2010-04-02   | 20    |
| ACS              | DT-ACS   | <input type="button" value="Renew"/> | On     | 2010-04-03 | 2011-04-02   | 1000  |

**Trial Version**

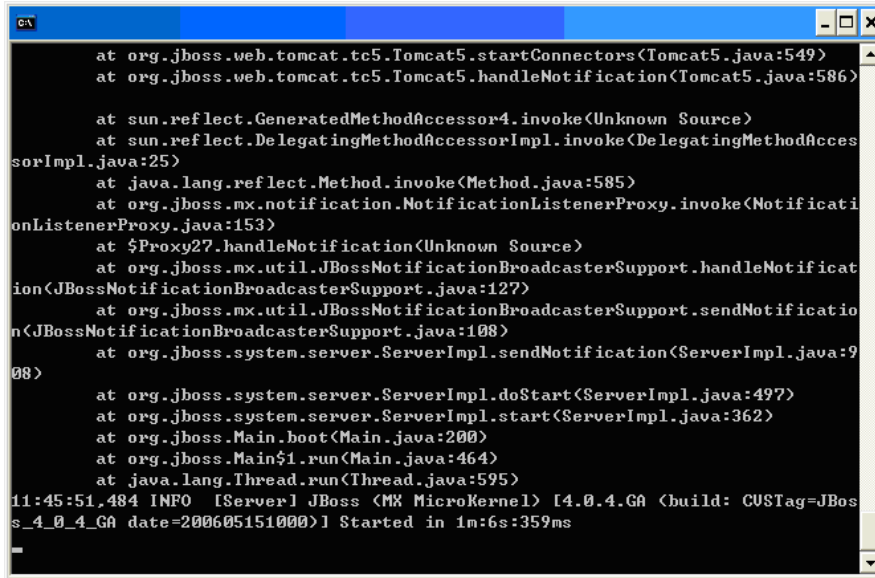
- Means such service is in use.
- Means such service is not in use.
- Means such service has not been activated yet.
- Means such service is in use and will be invalid soon(less than one month).

- Allows you to have the free trial for service.
- Allows you to renew service license.
- Allows you to activate service.

# 5

## Troubleshooting

When you try to invoke VigorACS and get the following error message, please locate the file of “*server.log*” from **C:/Program Files/ VigorACS /server/default/log** and send the file to your dealer for further assistance.



```
at org.jboss.web.tomcat.tc5.Tomcat5.startConnectors(Tomcat5.java:549)
at org.jboss.web.tomcat.tc5.Tomcat5.handleNotification(Tomcat5.java:586)

at sun.reflect.GeneratedMethodAccessor4.invoke(Unknown Source)
at sun.reflect.DelegatingMethodAccessorImpl.invoke(DelegatingMethodAccess
sorImpl.java:25)
at java.lang.reflect.Method.invoke(Method.java:585)
at org.jboss.mx.notification.NotificationListenerProxy.invoke(NotificationLi
stenerProxy.java:153)
at $Proxy27.handleNotification(Unknown Source)
at org.jboss.mx.util.JBossNotificationBroadcasterSupport.handleNotificat
ion(JBossNotificationBroadcasterSupport.java:127)
at org.jboss.mx.util.JBossNotificationBroadcasterSupport.sendNotificatio
n(JBossNotificationBroadcasterSupport.java:108)
at org.jboss.system.server.ServerImpl.sendNotification(ServerImpl.java:9
08)

at org.jboss.system.server.ServerImpl.doStart(ServerImpl.java:497)
at org.jboss.system.server.ServerImpl.start(ServerImpl.java:362)
at org.jboss.Main.boot(Main.java:200)
at org.jboss.Main$1.run(Main.java:464)
at java.lang.Thread.run(Thread.java:595)
11:45:51.484 INFO [Server] JBoss (MX MicroKernel) [4.0.4.GA (build: CUSTag=JBos
s_4_0_4_GA date=200605151000)] Started in 1m:6s:359ms
```

For Linux system, please locate the file of “*server.log*” from **/usr/local/vigoracs/VigorACS/server/default/log/** and send the file to your dealer for further assistance.