

## Quarterly Recommend Products

Zhejiang Uniview Technologies Co., Ltd. is the pioneer and leader of IP video surveillance. Heritages profound IT technologies, we founded independently in December, 2011. We are the third largest in the overall video surveillance market in China and 8th in global market. We insist on open cooperation, focusing on high quality and improving innovative ability.

### Product Line:

Network camera, NVR, encoder, decoder, IP SAN, client software and app.



Better Security, Better World.



Distributed by



[www.uniview.com](http://www.uniview.com)

Sales: [overseasbusiness@uniview.com](mailto:overseasbusiness@uniview.com)  
Technical Support: [globalsupport@uniview.com](mailto:globalsupport@uniview.com)

2016.11 OM - 161121 - SD V1.0  
Disclaimer: All rights reserved, including final interpretation and content amendent.



## H.265 (High Efficiency Video Coding)

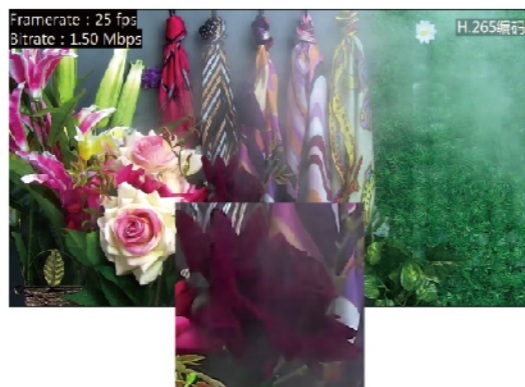


H.265, known as High Efficiency Video Coding, is the new successor to Advanced Video Coding (AVC), also known as H.264. H.265 can reduce up to 50% bandwidth but keep high picture quality.

### H.264



### H.265



## U-code Deep Compression

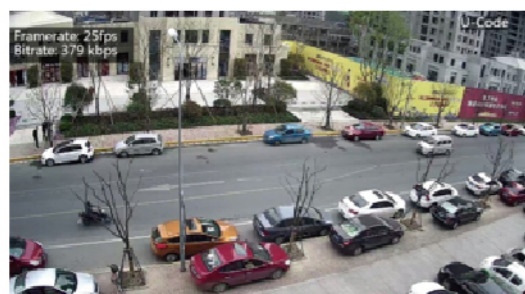


U-code is an enhanced encoding technology released by Uniview which can help to reduce up to approximately 80-95% bandwidth compared with common encoding algorithm while keeping the details clearly.

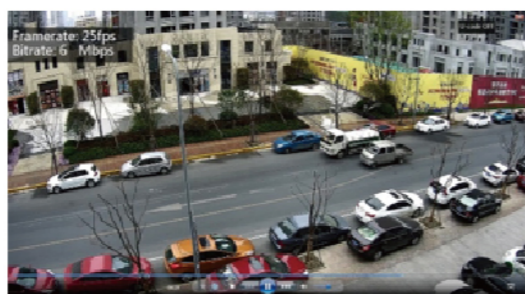
U-code uses IRP (Intelligent Region Perception) to detect motion in each frame so that scenes containing interesting information could be preserved while the other relatively static area such as lawns, white walls could be squeezed to save storage.

Take a 4MP IPC as an example. Normally bit rate is 6Mbps, and it may roughly store 63G a day. But in U-code mode, the bit rate can be reduced up to 0.3Mbps, and it only stores 3G a day.

### U-code for H.265



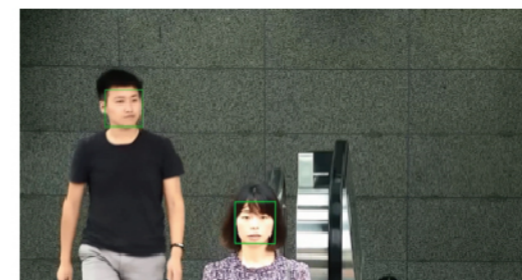
### U-code for H.264



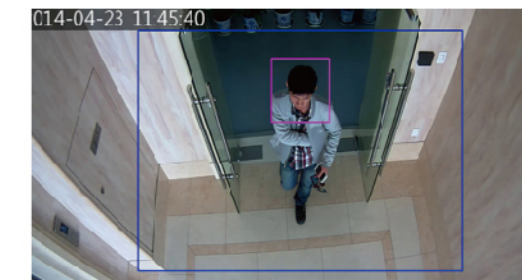
## Smart Function



### Face detection



### People counting



### Crossing line



### Intrusion



## 4K Camera Series



### IPC568E-G(4K) 4K Box Camera



- Optical defog
- SD/SDHC card slot
- Fiber interface

### IPC6858SR-X22(4K) IR 4K PTZ Dome Camera



- 24 VAC/24 VDC
- Up to 250m IR
- 22X optical zoom

### IPC268ER9-DZ(4K) IR 4K Bullet Camera



- 120dB WDR
- Up to 100m IR
- IP67
- SD/SDHC card slot
- 2.8-12mm AF motorized

### IPC3238ER3-DVZ(4K) IR 4K Fixed Dome Camera



- 120dB WDR
- Up to 30m IR
- IP66
- SD/SDHC card slot
- 2.8-12mm AF motorized



## Starlight Camera Series



### IPC322ER3-DUVPF28 (40)-B(2MP)

Starlight IR Fixed Dome Camera



- 120dB WDR
- Up to 30m IR
- IP66
- SD/SDHC card slot

### IPC2122SR3-UPF40 (60)(2MP)

Starlight Mini IR Bullet Camera



- 120dB WDR
- Up to 30m IR
- IP66

### IPC2222SR5-UPF40 (60)-B(2MP)

Starlight IR Bullet Camera



- Up to 50m IR
- IP66
- SD/SDHC card slot

### IPC2224SR5-DUPF40 (60)-B(4MP)

Starlight IR Bullet Camera



- Up to 50m IR
- IP66
- SD/SDHC card slot

### IPC262ER9-DUZ(2MP)

Starlight IR Bullet Camera



- 120dB WDR
- Up to 100m IR
- IP67
- SD/SDHC card slot
- 2.8-12mm AF motorized

### IPC262EFW-DUZ(2MP)

Starlight IR Bullet Camera



- 120dB WDR
- Up to 50m IR
- IP67
- PIR
- 2.8-12mm AF motorized

### IPC262ER9-X10DU (2MP)

Starlight IR Bullet Camera



- 120dB WDR
- Up to 100m IR
- IP67
- SD/SDHC card slot
- 4.7-47mm AF motorized

### IPC252ERA-X22DUG (2MP)

Starlight IR Bullet Camera



- 120dB WDR
- Up to 100m IR
- IP67
- SD/SDHC card slot
- 22X camera module

### IPC3232ER3-DUV(2MP)

Starlight IR Dome Camera



- 120dB WDR
- Up to 30m IR
- IP66
- SD/SDHC card slot
- 2.8-12mm manual

### IPC3232ER3-DUVZ(2MP)

Starlight IR Dome Camera



- 120dB WDR
- Up to 30m IR
- IP66
- SD/SDHC card slot
- 2.8-12mm motorized

### IPC562E-DUG(2MP)

Starlight Box Camera



- 120dB WDR
- Optical defog
- ABF
- SD/SDHC card slot
- Fiber interface

### IPC6252SR-X22U(G) (2MP)

Starlight PTZ Dome Camera



- 24 V AC/ 24V DC
- Up to 200m IR
- IP66
- -40°C ~ 70°C
- 22X optical zoom

### IPC6252SR-X33U (2MP)

Starlight PTZ Dome Camera



- 24V AC/ 24V DC
- Up to 150m IR
- IP66
- -40°C ~ 70°C
- 33X optical zoom

### IPC6252SFW-X22U (2MP)

Starlight Full Spectrum PTZ Dome Camera



- 24V AC/ 24V DC
- White Light: 30m
- IR: 30-150m
- IP66
- -40°C ~ 70°C
- 22X optical zoom

### IPC6252SL-X33UP (2MP)

Starlight PTZ Dome Camera



- 24V AC/ 24V DC
- IR: 30m
- Laser: 30-500m
- IP66
- -40°C ~ 70°C
- 33X optical zoom

### IPC6852SR-X44U (2MP)

Starlight PTZ Dome Camera



- 24V AC/ 24V DC
- Up to 250m IR
- IP66
- -45°C ~ 70°C
- 44X optical zoom

## Network Camera



### IPC2122SR3-PF40 (60)-B(2MP)

Mini IR Bullet Camera



- DWDR
- Up to 30m IR
- IP66

### IPC2124SR3(4MP)

Mini IR Bullet Camera



- 120dB WDR
- Up to 30m IR
- IP66

### IPC2124SR3-DPF36 (60)-16G(4MP)

Mini IR Bullet Camera



- 120dB WDR
- Up to 30m IR
- IP66
- 16G EMMC storage

### IPC2224SR5-DPF40 (60)-B(4MP)

IR Fixed Bullet Camera



- 120dB WDR
- Up to 50m IR
- IP66
- SD/SDHC card slot

### IPC322SR3-DVSPF28 (40)-B(2MP)

IR Fixed Dome Camera



- 120dB WDR
- Up to 30m IR
- IP66
- SD/SDHC card slot

### IPC324ER3-DVPF (4MP)

IR Fixed Dome Camera



- 120dB WDR
- Up to 30m IR
- IP66
- SD/SDHC card slot

### IPC3612ER3-PF-B(2MP)

IR Turret Camera



- DWDR
- Up to 30m IR
- IP66
- Metal base (@M)

### IPC3614SR3(4MP)

IR Turret Camera



- 120dB WDR
- Up to 30m IR
- IP66
- Metal base (@M)

**IPC314SR-DVPF28 (36)(4MP)**

VF IR Fixed Mini Dome Camera



- 120dB WDR
- Up to 15m IR
- IP66
- SD/SDHC card slot

**IPC2322EBR-DPZ28 (2MP)**

VF IR Bullet Camera



- 120dB WDR
- Up to 30m IR
- IP66
- SD/SDHC card slot
- 2.8-12mm motorized

**IPC2324EBR-DPZ28 (4MP)**

VF IR Bullet Camera



- 120dB WDR
- Up to 30m IR
- IP66
- SD/SDHC card slot
- 2.8-12mm motorized

**IPC2324EBR-DP(4MP)**

VF IR Bullet Camera



- 120dB WDR
- Up to 30m IR
- IP66
- SD/SDHC card slot
- 2.8-12mm manual

**IPC3231ER-DV(1.3MP)**

VF IR Fixed Dome Camera



- 120dB WDR
- Up to 30m IR
- IP66
- SD/SDHC card slot
- 2.8-12mm manual

**IPC3232ER3-DVZ28 (2MP)**

VF IR Fixed Dome Camera



- 120dB WDR
- Up to 30m IR
- IP66
- SD/SDHC card slot
- 2.8-12mm motorized

**IPC3234SR-DV(4MP)**

VF IR Fixed Dome Camera



- 120dB WDR
- Up to 30m IR
- IP66
- SD/SDHC card slot
- 2.8-12mm manual

**IPC3234SR3-DVZ28 (4MP)**

VF IR Fixed Dome camera



- 120dB WDR
- Up to 30m IR
- IP66
- SD/SDHC card slot
- 2.8-12mm motorized

**IPC814SR-DVPF16 (4MP)**

Fisheye Camera



- 120dB WDR
- Up to 10m IR
- IP66
- SD/SDHC card slot
- 1.6mm

**IPC742SR9(2MP)**

PT IR Bullet Camera



- DWDR
- Up to 100m IR
- IP66
- Pan range 250°, tilt range -50° to 50°
- Pan speed up to 30°/s, tilt speed up to 10°/s

**IPC744SR5(4MP)**

PT IR Bullet Camera



- DWDR
- Up to 50m IR
- IP66
- Pan range 250°, tilt range -50° to 50°
- Pan speed up to 30°/s, tilt speed up to 10°/s

**IPC6222ER-X20(P)-B(2MP)**

IR PTZ Dome Camera



- P: PoE supported
- Up to 100m IR
- IP66
- -40°C ~ 65°C
- 20X optical zoom

**IPC6222ER-X30(P)-B (2MP)**

IR PTZ Dome Camera



- P: PoE supported
- Up to 100m IR
- IP66
- -40°C ~ 65°C
- 30X optical zoom

**IPC6253SR-X33(3MP)**

IR PTZ Dome Camera



- 120dB WDR
- Up to 150m IR
- IP66
- -40°C ~ 70°C
- 33X optical zoom

**NVR**



**NVR301-04/08/16E**



- 4/8/16-ch IP input
- 1 SATA
- 4K, H.265
- 4/1 alarm I/O
- P2P, Email, UPnP, DDNS, NTP, DHCP

**NVR301-04-P4  
NVR301-08-P8  
NVR301-16-P8**



- 4/8/16-ch IP input
- 1 SATA
- 4K, H.265
- 4/1 alarm I/O
- 4/8/8 PoE ports
- P2P, Email, UPnP, DDNS, NTP, DHCP

**NVR301-04L-P4  
NVR301-08L-P8  
NVR301-16L-P8**



- 4/8/16-ch IP input
- 1 SATA
- 4K, H.265
- Desktop housing
- 4/8/8 PoE ports
- P2P, Email, UPnP, DDNS, NTP, DHCP

**NVR302-08E-P8  
NVR302-16E-P8  
NVR302-16E-P16**



- 8/16/16-ch IP input
- 2 SATA
- 4K, H.265
- 4/1 alarm I/O
- 8/8/16 PoE ports
- P2P, Email, UPnP, DDNS, NTP, DHCP

**NVR304-16/32E**



- 16/32-ch IP input
- 4 SATA
- 4K, H.265
- 16/4 alarm I/O
- Dual network interfaces

**NVR304-16/32EP**



- 16/32-ch IP input
- 4 SATA
- 4K, H.265
- 16 PoE ports
- 16/4 alarm I/O
- Dual network interfaces

**NVR308-32/64E**



- 32/64-ch IP input
- 8 SATA
- 4K, H.265
- 16/4 alarm I/O
- Dual network interfaces

**NVR308-32/64R**



- 32/64-ch IP input
- 8 SATA
- 4K, H.265
- 16/4 alarm I/O
- RAID 1, 5 & hot-swap
- Dual network interfaces

**NVR516-64/128**



- 64/128-ch IP input
- 16 SATA
- 4K, H.265
- 24/8 alarm I/O
- RAID 1, 5 & hot-swap
- Redundant power supply (optional)
- Extra 12 HDMI outputs extendable